

PUBLIC LAND SURVEY MONUMENT RECORD

TYPE OF MONUMENT: SURVEY NAIL
 ADAMS COUNTY COORDINATES, NAD 83 (2007)

N. 311567.640

E. 551756.506

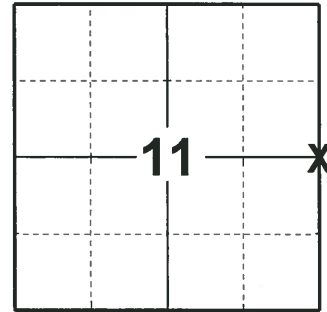
ELEVATION- DATUM

FIELD WORK DATE: 05/07/2018

BASIS FOR MONUMENT LOCATION

1975 - PLS 1103 RETRACED THE SURVEY OF FIESTA PINES UNRECORDED PLAT, FOR THE LOT SURVEY FOR GILBERT CHUTE, MAY 8, 1974. FOUND NO EVIDENCE OF THE CORNER OR ANY REMONUMENTATION. SET A HARRISON MONUMENT AND TIED OUT.

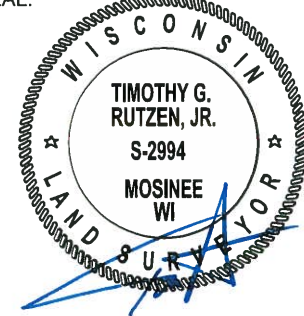
2018 - PLS 2994 FOUND A MAG NAIL IN THE ROAD SURFACE AND 3 WITNESSES. REMOVED THE MAG NAIL AND FOUND NO EVIDENCE OF THE PREVIOUSLY SET HARRISON MONUMENT BELOW IT. THE MAG NAIL AGREES WITH THE EXISTING WITNESSES. ACCEPTED THE MAG NAIL LOCATION AS THE CORNER LOCATION. REPLACED THE MAG NAIL WITH A SURVEY NAIL AND SET 4 NEW TIES AND MEASURED TO THE TIES AND WITNESSES.



LOCATION

(INDICATE CORNER BY "X")

SEAL:



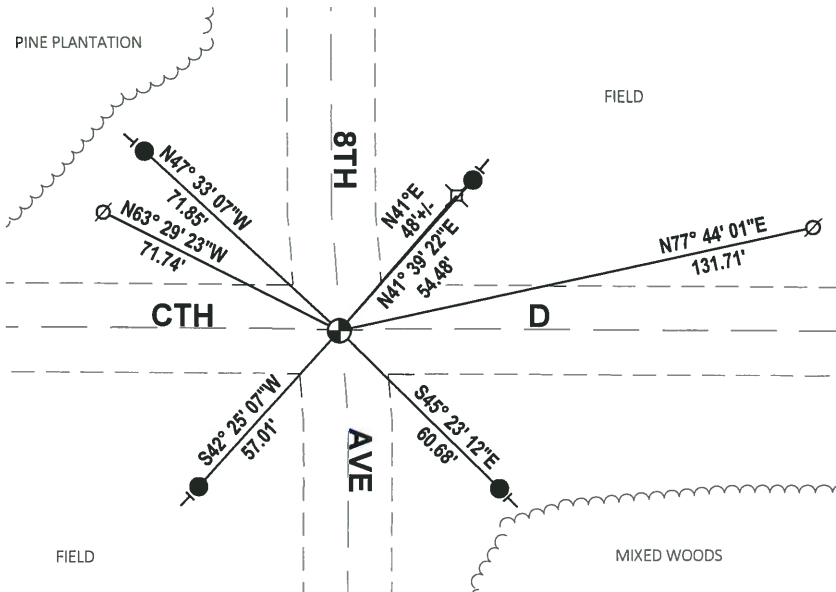
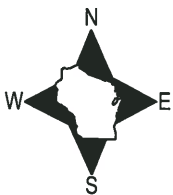
DATA SHOWN HERE ON THIS TIE SHEET IS CORRECT AND COMPLETE TO THE BEST OF MY KNOWLEDGE AND BELIEF.

PROFESSIONAL LAND SURVEYOR

DATE 7-18-18

TIE SKETCH

NOTE: THE CORNER FALLS 0.5'± SOUTH OF THE CENTERLINE OF CTH D AND 1'± WEST OF THE CENTERLINE OF 8TH AVE.



- SET 3/4" x 18" IRON REBAR, 1.50#/FT
- ⊙ SET SURVEY NAIL
- ⊘ WITNESS POWER POLE
- ⊗ WITNESS ELECTRICAL PEDESTAL
- ┆ VINYL "T" POST

ADAMS COUNTY

Survey Monument Record

TYPE OF MONUMENT: Harrison Monument

STATE PLANE COORDINATES: N _____
E _____

ELEVATION — M.S.L. DATUM: _____

THETA ANGLE: _____

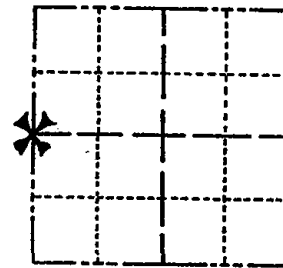
FIELD BOOK: _____ PAGE _____

CORNER NO. 913 ⁽³⁹⁾

SECTION 12

TOWN 20 N

RANGE 6 E



LOCATION
(Indicated by 'X')

SEAL:

BASIS FOR MONUMENT LOCATION

(Use reverse side if necessary)

Show info such as: History of corner, with reference to Vol. and pg, dates, surveyor; exact description of monument replaced; if location computed, by taped or EDM traverse; landowner remarks, etc.

Retraced survey of Fiesta Pines unrecorded plat,
for the lot survey for Gilbert Chute, May 8, 1974.

Could find no other evidence of the corner or
any remonumentation.



- 2 gone 3 new 4-19-84 SS-DK
- OK 3-8-89 GR-SS
- " 3-31-94 JG-SS
- OK 1-11-99 JG-JF
- OK 2-24-04 JG
- 3 TIES 4 Mon OR 1-7-10 SS
- OK 4-13-79 SS-JSK

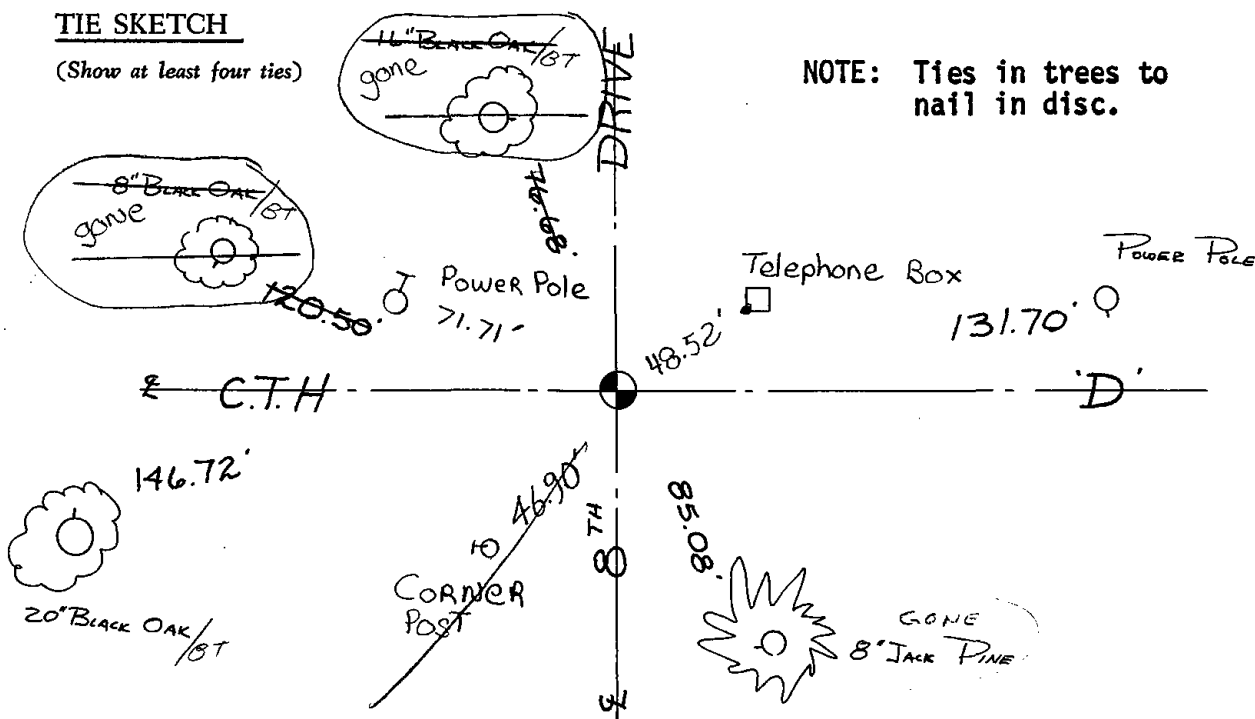
CERTIFIED CORRECT:

Dale C. Hagen
Registered Land Surveyor

DATE: Sept. 19, 1975

TIE SKETCH

(Show at least four ties)



NOTE: Ties in trees to
nail in disc.

