

PUBLIC LAND SURVEY MONUMENT RECORD

TYPE OF MONUMENT: 1-1/4" IRON ROD
ADAMS COUNTY COORDINATES, NAD 83 (2007)

N. 308690.070

E. 527966.494

ELEVATION- - - - - DATUM - - - - -

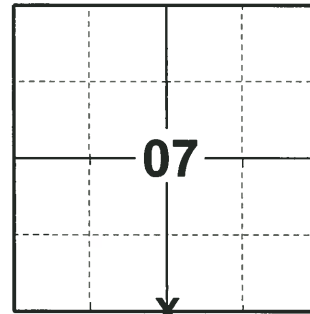
FIELD WORK DATE: 05/03/2018

BASIS FOR MONUMENT LOCATION

1976 - PLS 742 COULD NOT FIND ANY EVIDENCE OF THE CORNER LOCATION OTHER THAN AN OLD FENCE THAT RUNS TO THE NORTH. AFTER EXCAVATING AT THE CORNER LOCATION, FOUND TWO SMALL PIECES OF SAND STONE. CALCULATED THE CORNER POSITION ON A STRAIGHT LINE BETWEEN THE FOUND HARRISONS AT THE SW & SE CORNERS AND PRORATED THE DISTANCE FROM THE ORIGINAL GOV'T SURVEY. THIS CALCULATED POSITION WAS 2' TO 3' WEST OF THE OLD FENCE. SET A HARRISON MONUMENT AND TIED OUT.

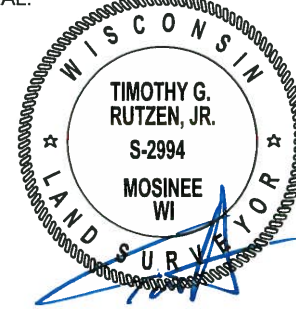
2008 - PLS 2031 THE PRIOR HARRISON MONUMENT WAS DESTROYED DURING THE 2007 PIPELINE CONSTRUCTION. RE-ESTABLISHED CORNER USING RECORD MEASUREMENTS FROM CERTIFIED SURVEY MAP NUMBER 4936, V. 24, P 267 AND CERTIFIED SURVEY MAP NUMBER 3226. SET A 1.27 INCH OUTSIDE DIAMETER X 18 INCH #10 REBAR WEIGHING 4.303 POUNDS PER LINEAL FOOT. (JULY 29TH, 2007) AT CORNER AND RE-TIED.

2018 - PLS 2994 FOUND A 1-1/4" IRON ROD FLUSH WITH THE GROUND SURFACE AND 4 TIES. THE MONUMENT AGREES WITH THE EXISTING TIES. ACCEPTED THE 1-1/4" IRON ROD AS THE CORNER LOCATION AND RE-MEASURED TO THE EXISTING TIES.



LOCATION
(INDICATE CORNER BY "X")

SEAL:



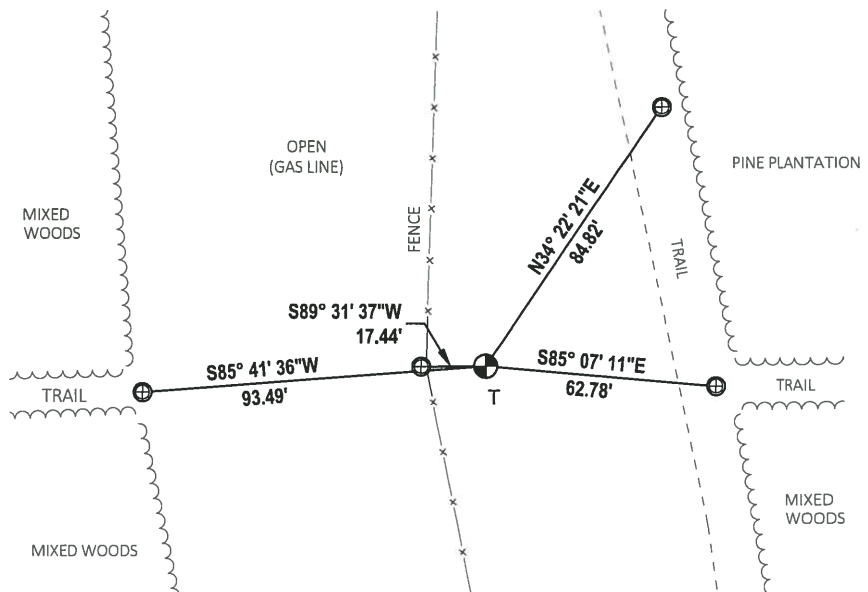
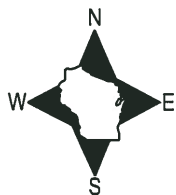
DATA SHOWN HERE ON THIS TIE SHEET IS CORRECT AND COMPLETE TO THE BEST OF MY KNOWLEDGE AND BELIEF.

PROFESSIONAL LAND SURVEYOR

DATE 7-18-18

- TIE SKETCH

NOTE: THE CORNER FALLS 16'± EAST OF THE FENCE LINE.



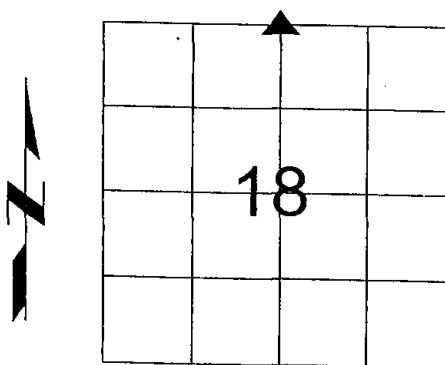
- ⊕ FOUND 1" O.D. IRON PIPE
- ⊕ FOUND 1-1/4" IRON ROD
- | VINYL "T" POST

(a): Identity of the corner, as referenced to the U.S. public land survey system:

N 1/4 CORNER OF SECTION 18, TOWNSHIP 20N,
RANGE 6E, TOWN OF ROME, ADAMS COUNTY,
WISCONSIN.

▲ = Corner Monument Restored.

OK 07-10-09 SS



42

CORNER	SECTION	TWP	RANGE
N 1/4	18	20N	6E

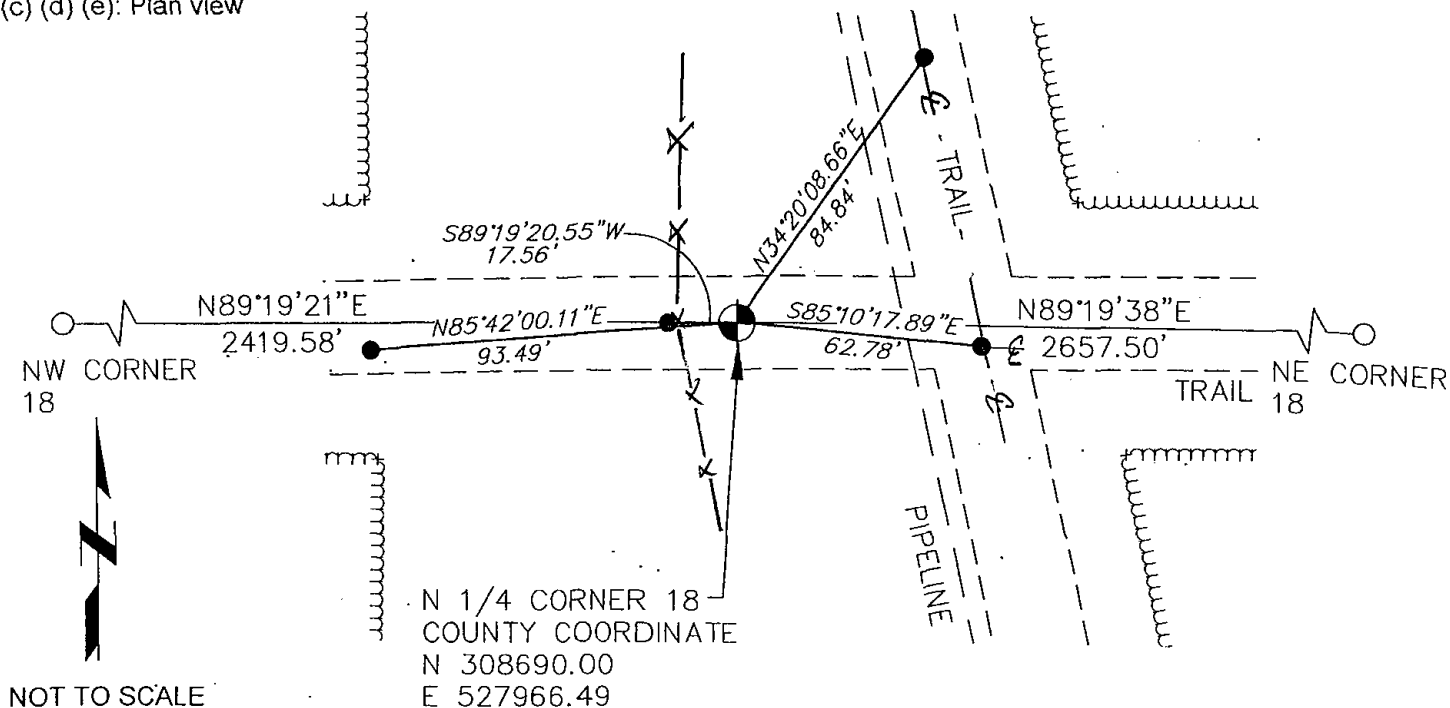
(b): Description of any record evidence, monument evidence, occupational evidence, testimonial evidence or any other material evidence considered by the surveyor, and whether the monument was found or placed:

The Harrison Monument was destroyed during the 2007 pipeline construction.

Replaced monument using record measurements. See Certified Survey Map Number 4936, V. 24, P 267 and Certified Survey Map Number 3226.

Set 1.27 inch outside diameter x 18 inch #10 Rebar weighing 4.303 pounds per lineal foot. (July 29th, 2007).

(c) (d) (e): Plan view



NOT TO SCALE

All Witness Monuments are 1.05 inch outside diameter x 18 inch iron pipe weighing 1.13 pounds per lineal foot unless otherwise noted.

PLAN VIEW

SHEET 1 OF 2

ADAMS COUNTY

Survey Monument Record

TYPE OF MONUMENT: Harrison

STATE PLANE COORDINATES: N _____
E _____

ELEVATION — M.S.L. DATUM: _____

THETA ANGLE: _____

FIELD BOOK: _____ PAGE _____

CORNER NO. 1005

SECTION 7

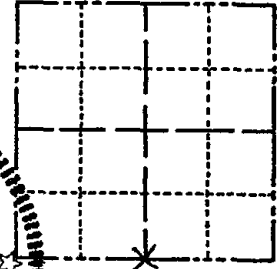
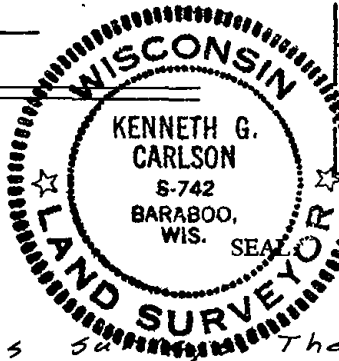
TOWN 20 N

RANGE 6 E

BASIS FOR MONUMENT LOCATION

(Use reverse side if necessary)

Show info such as: History of corner, with reference to Vol. and pg. dates, surveyor; exact description of monument replaced; if location computed, by taped or EDM traverse; landowner remarks, etc.



LOCATION (Indicated by 'X')



Could not find any previous survey. There is an old fence that runs to the north. Excavation found nothing except two small pieces of sand stone. The 5/4 corner Harrison was set on a straight line between the Harrison at the S.E. corner and the old govt. post found by Kiedrowski (where he will set a Harrison) at the SW corner and prorated the distance from the original govt survey. This put the Harrison 2'to 3' west of the old fence.

CERTIFIED CORRECT:

Kenneth G. Carlson
Registered Land Surveyor

DATE: May 10, 1976

EDM and Taped

3-GONE, 3-NEW 2-25-84 - JG

TIE SKETCH

(Show at least four ties)

