

## PUBLIC LAND SURVEY MONUMENT RECORD

TYPE OF MONUMENT: HARRISON  
 ADAMS COUNTY COORDINATES, NAD 83 (2007)

N. 308721.214

E. 530623.822

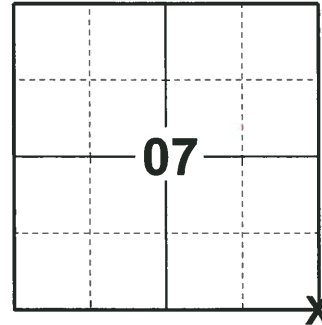
ELEVATION- \_\_\_\_\_ DATUM \_\_\_\_\_

FIELD WORK DATE: 05/03/2018

### BASIS FOR MONUMENT LOCATION

1974 - PLS 841 FOUND NO EVIDENCE OF ORIGINAL OR RECORD CORNER. CALCULATED CORNER LOCATION BY PROPORTIONAL EVIDENCE BASED ON EDM TRAVERSE OF SECTION 8. SET A STANDARD 30" C.I. HARRISON MONUMENT AT THE CORNER AND TIED OUT.

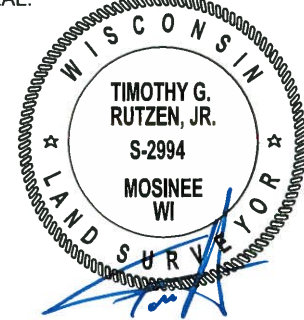
2018 - PLS 2994 FOUND A HARRISON MONUMENT 30" BELOW THE GROUND SURFACE, 1 WITNESS TREE, 2 TIES AND 1 PROPERTY IRON. THE MONUMENT AGREES WITH THE EXISTING WITNESS TREE AND TIES. ACCEPTED THE HARRISON MONUMENT AS THE CORNER LOCATION. SET 1 NEW TIE AND MEASURED TO THE TIES AND WITNESS TREE.



LOCATION

(INDICATE CORNER BY "X")

SEAL:



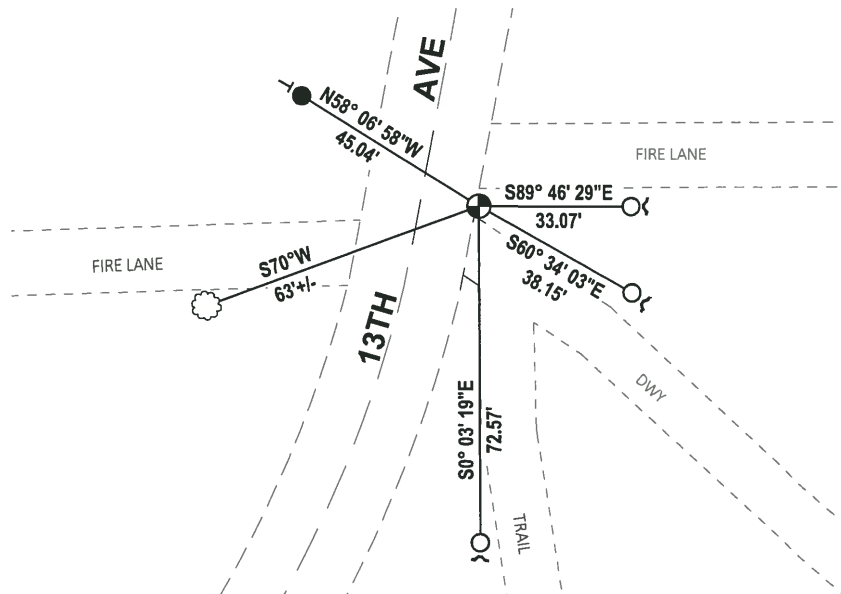
DATA SHOWN HERE ON THIS TIE SHEET IS CORRECT AND COMPLETE TO THE BEST OF MY KNOWLEDGE AND BELIEF.

PROFESSIONAL LAND SURVEYOR

DATE 7-18-18

### TIE SKETCH

NOTE: THE CORNER FALLS 13± EAST OF THE CENTERLINE OF 13TH AVE.



- SET 3/4" x 18" IRON REBAR, 1.50#/FT
- FOUND 3/4" IRON ROD
- FOUND HARRISON MONUMENT
- ┌ STEEL FENCE POST
- └ VINYL "T" POST
- ⊗ WITNESS TREE

