

PUBLIC LAND SURVEY MONUMENT RECORD

TYPE OF MONUMENT: HARRISON
 ADAMS COUNTY COORDINATES, NAD 83 (2007)

N. 308736.843

E. 533257.586

ELEVATION- DATUM

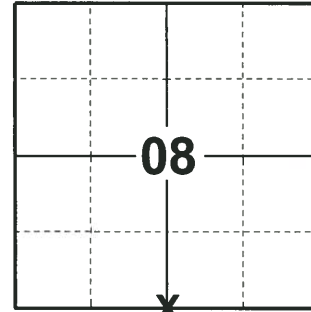
FIELD WORK DATE: 05/03/2018

BASIS FOR MONUMENT LOCATION

1974 - PLS 841 FOUND NO EVIDENCE OF THE ORIGINAL OR RECORD CORNER. CALCULATED THE CORNER BY PROPORTIONAL MEASUREMENT BASED ON E.D.M. TRAVERSE OF SECTION 8. SET A STANDARD 30" C.I. HARRISON MONUMENT AT THE CORNER AND TIED OUT.

2008 - PLS 2663 PRIOR TO ROAD CONSTRUCTION OF STH 13, FOUND THE CALLED FOR HARRISON MONUMENT IN GOOD CONDITION AND ACCEPTED ITS LOCATION AS TRUE. AFTER COMPLETION OF ROAD CONSTRUCTION SET A NEW HARRISON MONUMENT AND FOUR NEW WITNESS MONUMENTS. AT THE REQUEST OF THE PROJECT ENGINEER FOR WIS DOT PROJECT NO. 6140-00-73. REMOVED 3/4 IN. REBAR FROM PREVIOUS TIE SHEET AND SET WIS. D.O.T. ALUMINUM CAP IN CONCRETE FOR TIES. CONCRETE HAS TWO 30 IN. REBARS FOR METAL DETECTION.

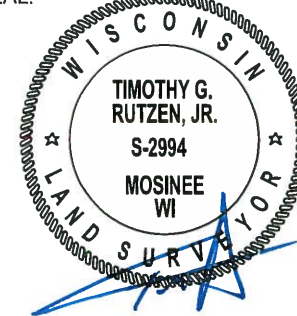
2018 - PLS 2994 FOUND A HARRISON MONUMENT 4" BELOW THE ROAD SURFACE AND 4 TIES. THE MONUMENT AGREES WITH THE EXISTING TIES. ACCEPTED THE HARRISON MONUMENT AS THE CORNER LOCATION. RE-MEASURED TO THE EXISTING TIES.



LOCATION

(INDICATE CORNER BY "X")

SEAL:



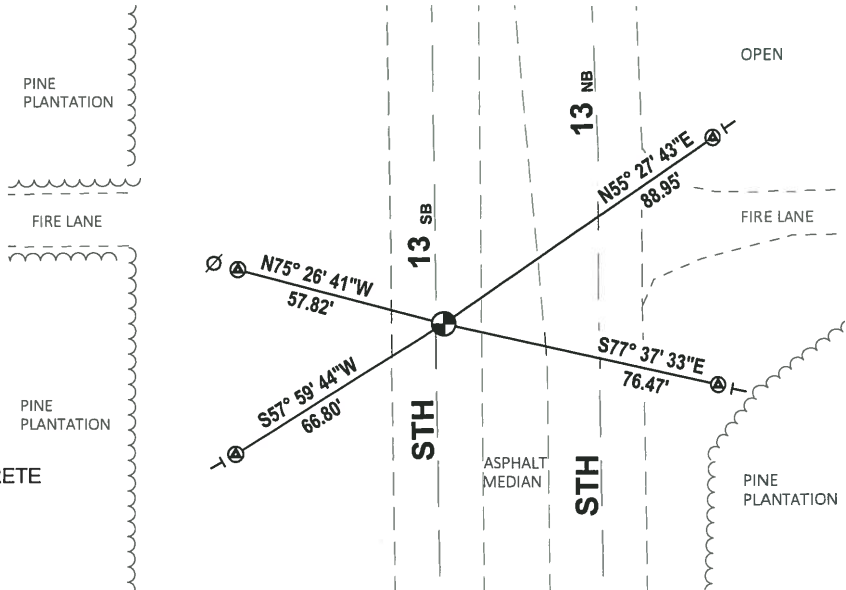
DATA SHOWN HERE ON THIS TIE SHEET IS CORRECT AND COMPLETE TO THE BEST OF MY KNOWLEDGE AND BELIEF.

PROFESSIONAL LAND SURVEYOR

DATE 7-18-18

TIE SKETCH

NOTE: THE CORNER FALLS 2± EAST OF THE CENTERLINE OF STH 13 SB AND 42± WEST OF THE CENTERLINE OF STH 13 NB.

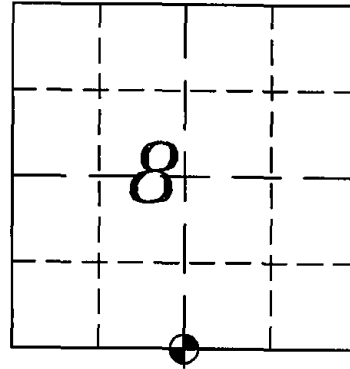


- ⊙ FOUND WISDOT ALUMINUM CAP IN CONCRETE
- ⊙ FOUND HARRISON MONUMENT
- ⊙ WITNESS POWER POLE
- | VINYL "T" POST

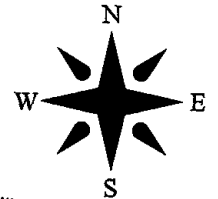
ADAMS COUNTY
SURVEY MONUMENT RECORD

CORNER NO. 583 (44)

TYPE OF MONUMENT: HARRISON
STATE PLANE COORDINATES: N _____
E _____
ELEVATION: _____
FIELD BOOK: _____ PAGE _____



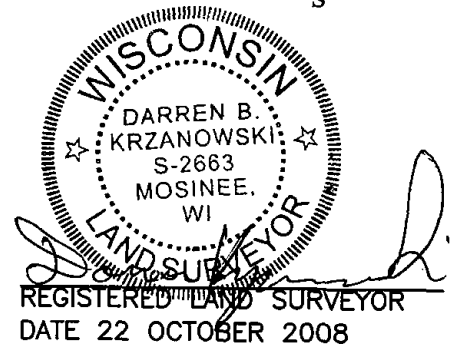
SECTION 8
TOWN 20 NORTH
RANGE 6 EAST
ROME
CITY, VILLAGE, TOWN



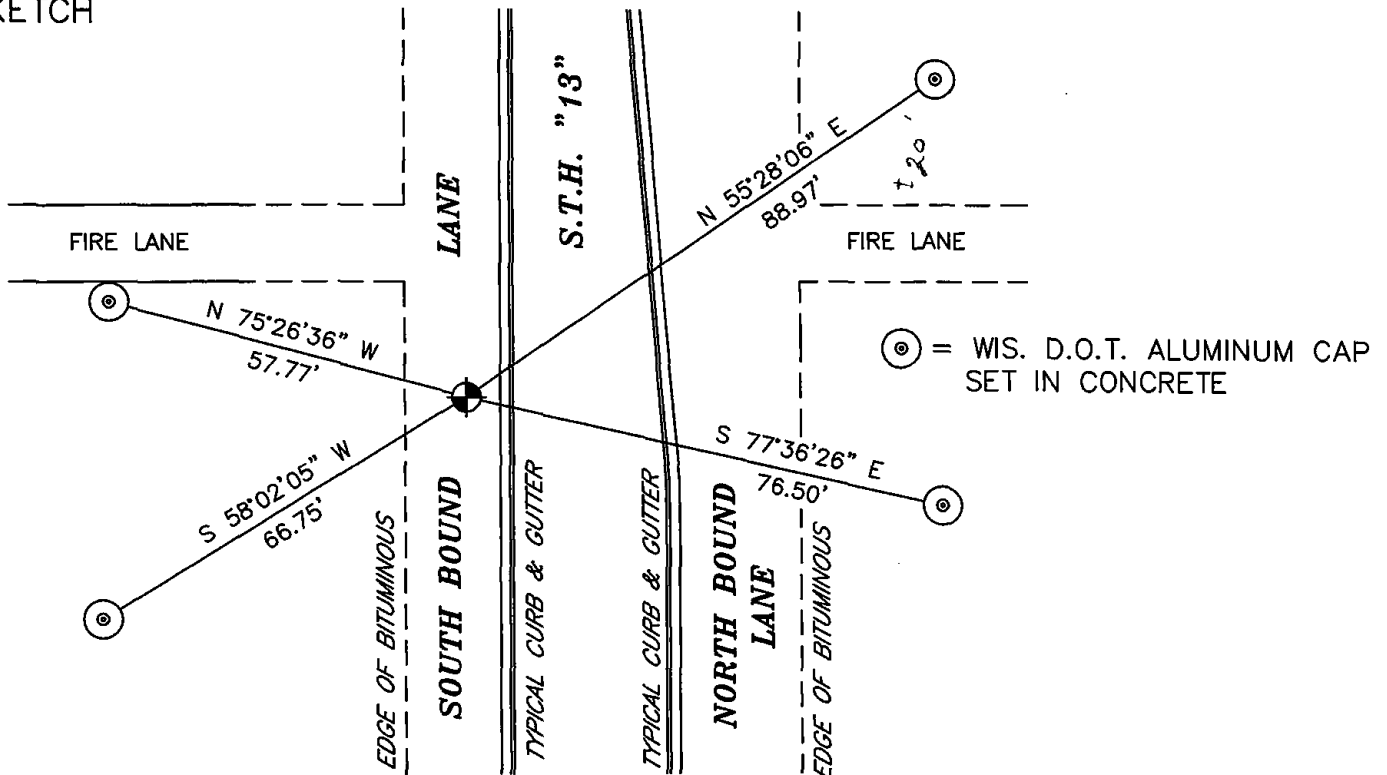
BASIS FOR CORNER LOCATION:
PRIOR TO ROAD CONSTRUCTION OF STH 13, FOUND THE CALLED
FOR HARRISON MONUMENT IN GOOD CONDITION AND ACCEPTED ITS
LOCATION HAS TRUE.
AFTER COMPLETION OF ROAD CONSTRUCTION SET A HARRISON
MONUMENT AND FOUR NEW WITNESS MONUMENTS.

AT THE REQUEST OF PROJECT ENGINEER FOR WIS DOT PROJECT NO.
6140-00-73. REMOVED 3/4 in. REBAR FROM PREVIOUS TIE SHEET
AND SET WIS. D.O.T. ALUMINUM CAP IN CONCRETE. CONCRETE HAS
TWO 30 in. REBARS FOR METAL DETECTION.

OK 9-29-09 SS



TIE SKETCH



ADAMS COUNTY

CORNER NO. 583 ⁽⁴⁴⁾

Survey Monument Record HARRISON MONUMENT

SECTION 8

TYPE OF MONUMENT: S 1/4 CORNER

TOWN 20 N.

STATE PLANE COORDINATES: N _____

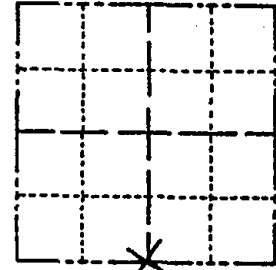
RANGE 6 E.

E _____

ELEVATION - M.S.L. DATUM: _____

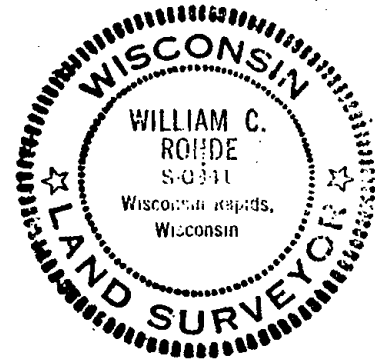
THETA ANGLE: _____

FIELD BOOK: _____ PAGE _____



LOCATION (Indicated by 'X')

SEAL:



BASIS FOR MONUMENT LOCATION

(Use reverse side if necessary)

Show info such as: History of corner, with reference to Vol. and pg. dates, surveyor; exact description of monument replaced; if location computed, by taped or EDM traverse; landowner remarks, etc.

NO ORIGINAL OR RECORDED CORNER EVIDENCE FOUND. CORNER SET BY PROPORTIONAL MEASUREMENT BASED ON EDM TRAVERSE OF SECTION. STD 30" C.I. HARRISON MONUMENT SET @ CORNER.

CERTIFIED CORRECT:

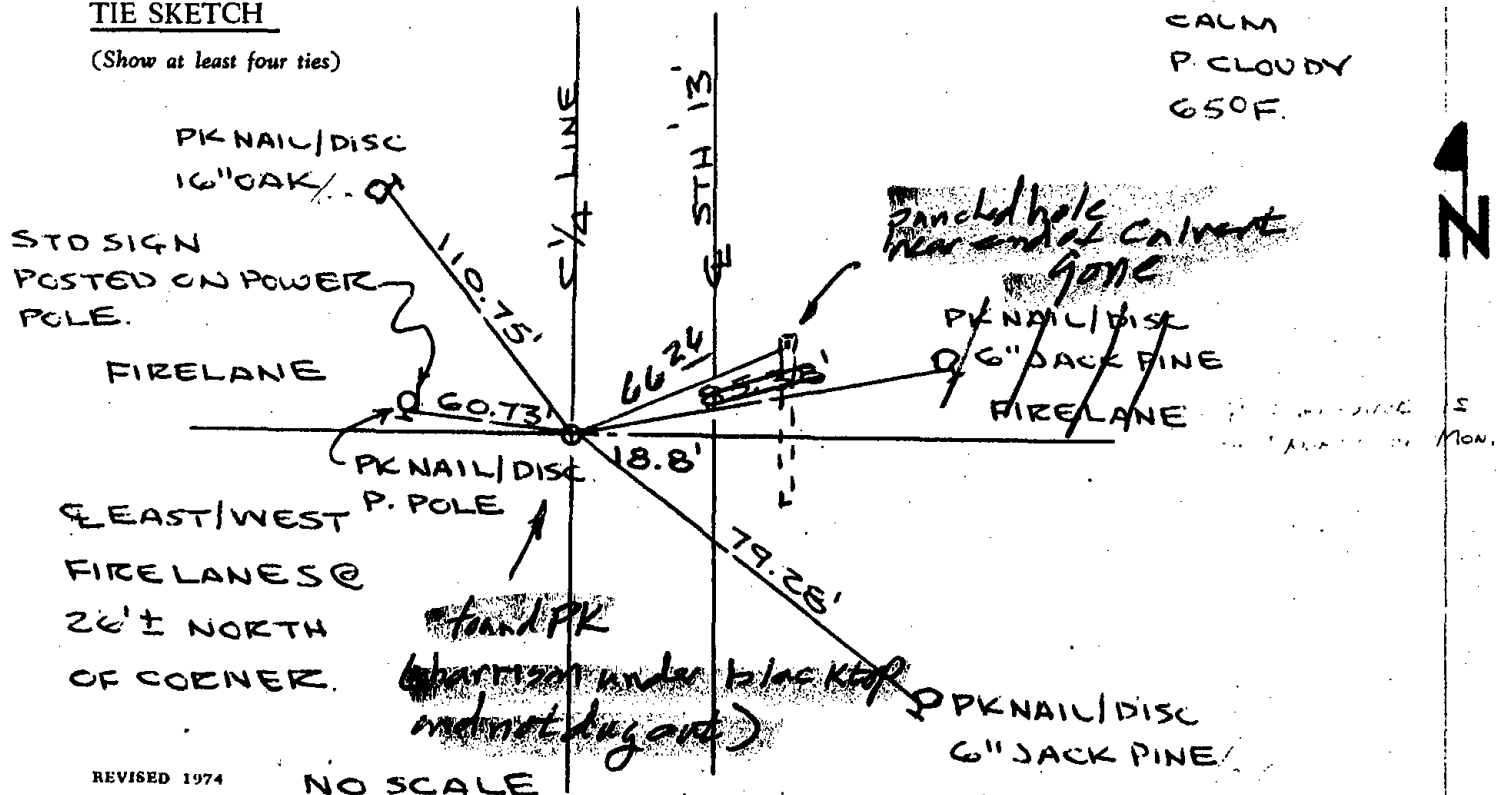
William C. Rohde
Registered Land Surveyor

DATE: 10/30/74

April 18 '91 Ken Carlson

TIE SKETCH

(Show at least four ties)



ADAMS COUNTY

Survey Monument Record HARRISON MONUMENT

TYPE OF MONUMENT: 1/4 CORNER

STATE PLANE COORDINATES: N _____

E _____

ELEVATION — M.S.L. DATUM: _____

THETA ANGLE: _____

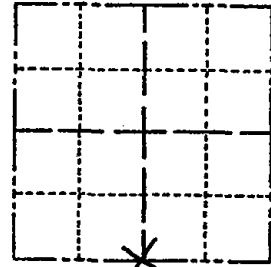
FIELD BOOK: _____ PAGE _____

CORNER NO. 583 (44)

SECTION 8

TOWN 20N.

RANGE 6E.



LOCATION (Indicated by 'X')

SEAL:



BASIS FOR MONUMENT LOCATION

(Use reverse side if necessary)

Show info such as: History of corner, with reference to Vol. and pg, dates, surveyor; exact description of monument replaced; if location computed, by taped or EDM traverse; landowner remarks, etc.

NO ORIGINAL OR RECORDED CORNER EVIDENCE FOUND. CORNER SET BY PROPORTIONAL MEASUREMENT BASED ON EDM TRAVERSE OF SECTION. STD 30" C.I. HARRISON MONUMENT SET @ CORNER.

SEE ATTACHED PAGE 4-18-91 - KC
OK 6-7-79 RN-RW 1 NEW TIE 4-11-89

1 gone no new 5-7-84 SS-DK
OK 3-7-94 JG-GR

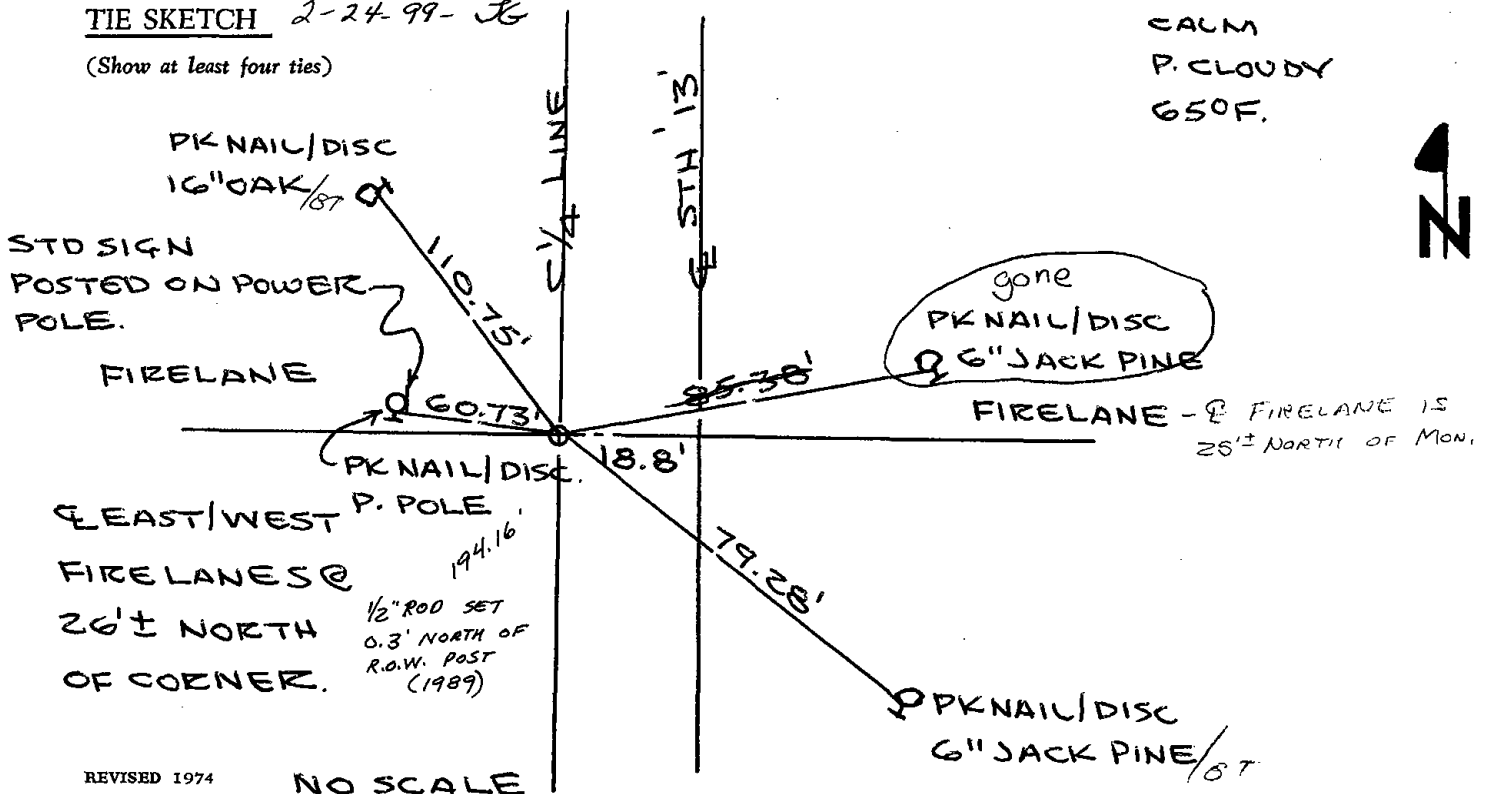
CERTIFIED CORRECT:

William C. Rohde
Registered Land Surveyor

DATE: 10/30/74

TIE SKETCH 2-24-99 - JG

(Show at least four ties)



CALM
P. CLOUDY
65°F.