

PUBLIC LAND SURVEY MONUMENT RECORD

TYPE OF MONUMENT: HARRISON
 ADAMS COUNTY COORDINATES, NAD 83 (2007)

N. 308752.337

E. 535891.868

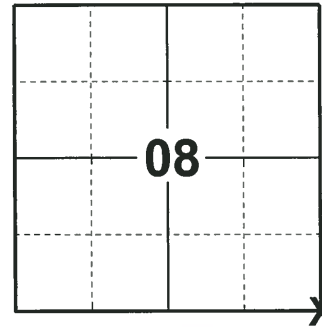
ELEVATION- DATUM

FIELD WORK DATE: 05/03/2018

BASIS FOR MONUMENT LOCATION

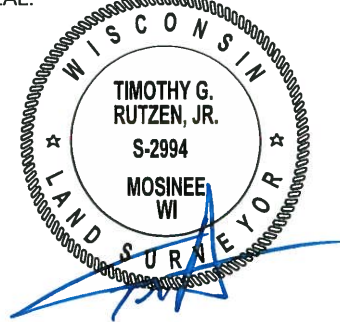
1974 - PLS 841 FOUND NO EVIDENCE OF THE ORIGINAL OR RECORD CORNER. CALCULATED THE CORNER BY PROPORTIONAL MEASUREMENT BASED ON E.D.M. TRAVERSE OF SECTION 8. SET A STANDARD 30" C.I. HARRISON MONUMENT AT THE CORNER AND TIED OUT.

2018 - PLS 2994 FOUND A HARRISON MONUMENT FLUSH WITH THE GROUND SURFACE AND 1 PROPERTY IRON. ACCEPTED THE HARRISON MONUMENT AS THE BEST EVIDENCE OF THE CORNER LOCATION. SET 3 NEW TIES AND MEASURED TO ALL TIES.



LOCATION
 (INDICATE CORNER BY "X")

SEAL:



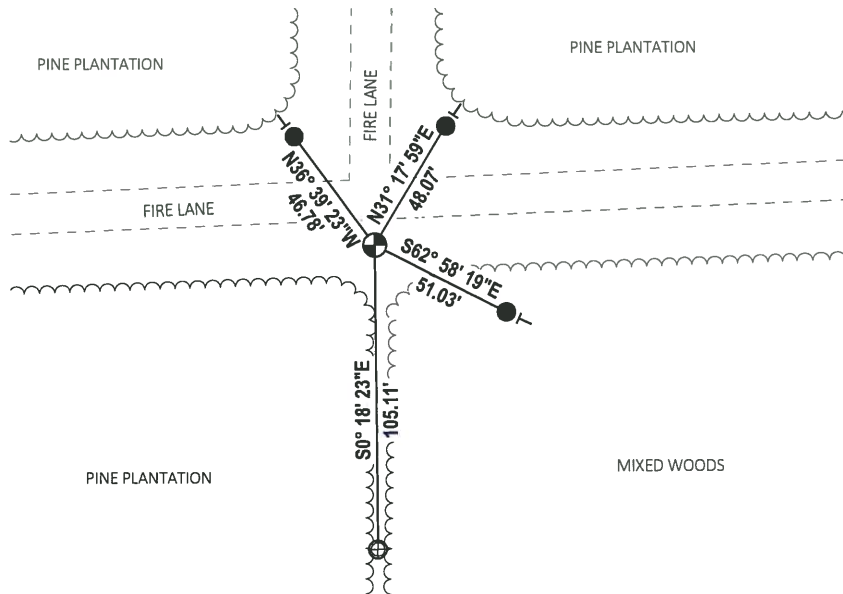
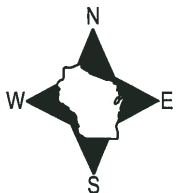
DATA SHOWN HERE ON THIS TIE SHEET IS CORRECT AND COMPLETE TO THE BEST OF MY KNOWLEDGE AND BELIEF.

PROFESSIONAL LAND SURVEYOR

DATE 7-18-18

TIE SKETCH

NOTE: THE CORNER FALLS 16± SOUTH OF THE CENTERLINE OF THE FIRE LANE.



- SET 3/4" x 18" IRON REBAR, 1.50#/FT
- ⊕ FOUND 1" O.D. IRON PIPE
- ⊙ FOUND HARRISON MONUMENT
- VINYL "T" POST

ADAMS COUNTY

Survey Monument Record

HARRISON STANDARD

TYPE OF MONUMENT: SE SECTION CORNER

STATE PLANE COORDINATES: N _____

E _____

ELEVATION — M.S.L. DATUM: _____

THETA ANGLE: _____

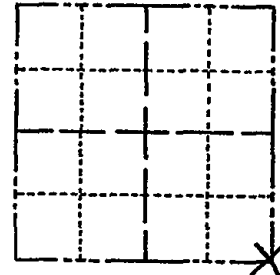
FIELD BOOK: _____ PAGE _____

CORNER NO. 616 ⁽⁴⁵⁾

SECTION 8

TOWN ZON.

RANGE 6E.



LOCATION
(Indicated by 'X')

SEAL:



BASIS FOR MONUMENT LOCATION

(Use reverse side if necessary)

Show info such as: History of corner, with reference to Vol. and pg, dates, surveyor; exact description of monument replaced; if location computed, by taped or EDM traverse; landowner remarks, etc.

NO ORIGINAL OR RECORD
CORNER EVIDENCE FOUND.
CORNER SET BY PROPORTIONAL
MEASUREMENT BASED ON
EDM TRAVERSE OF SECTION.
STD 30" C.I. HARRISON
MONUMENT SET @ CORNER.

OK 6-7-79 BKU-RW
OK 5-11-84 SS-
OK 3-7-94 JG-GR

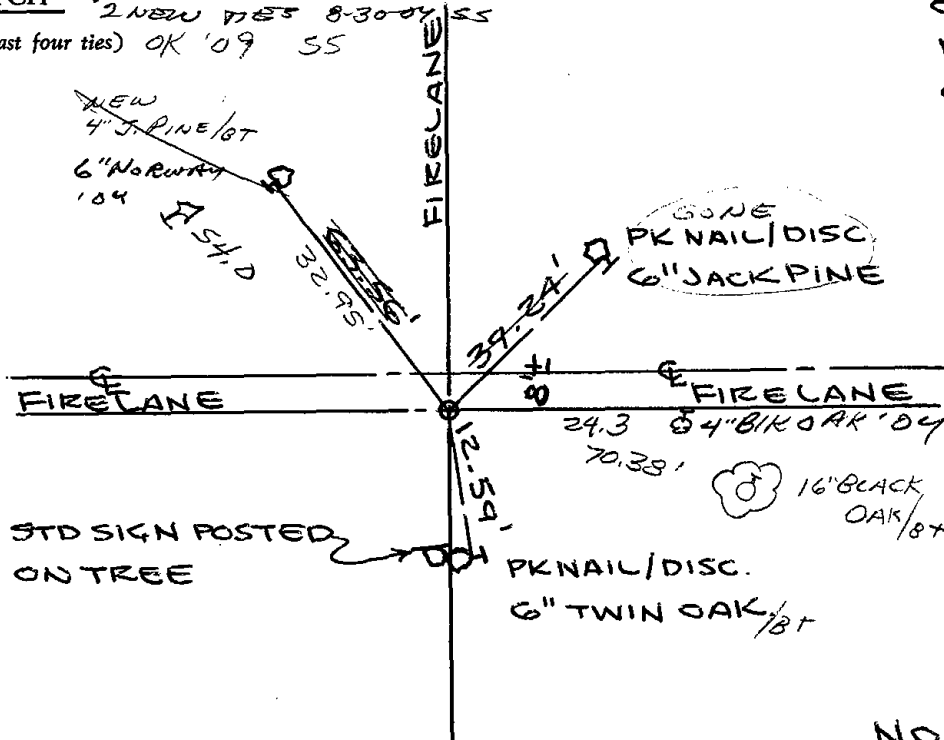
CERTIFIED CORRECT:

William C. Rohde
Registered Land Surveyor

DATE: 10/30/74

TIE SKETCH 2-24-99-JG
2 NEW TIES 8-30-04 SS
(Show at least four ties) OK '09 SS

CALM
P. CLOUDY
65°F.



NO SCALE