

PUBLIC LAND SURVEY MONUMENT RECORD

TYPE OF MONUMENT: HARRISON (BROKEN-TOP)
 ADAMS COUNTY COORDINATES, NAD 83 (2007)

N. 308770.296

E. 538541.253

ELEVATION- DATUM

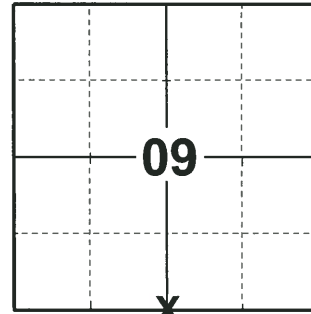
FIELD WORK DATE: 05/03/2018

BASIS FOR MONUMENT LOCATION

1981 - PLS 1167 FOUND A 2" IRON PIPE AS SHOWN ON THE CHESTER ADDITION TO LAKE CAMELOT. ACCEPTED SAID 2" PIPE AND REPLACED WITH A HARRISON MONUMENT AND TIED OUT.

2004 - PLS (UNKNOWN) NOTED MONUMENT BROKEN, ADDED 3 NEW WITNESSES.

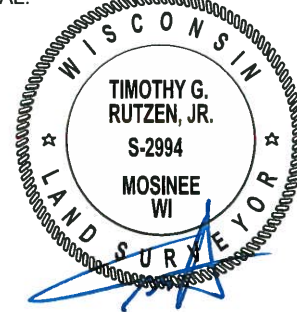
2018 - PLS 2994 FOUND A HARRISON MONUMENT WITH A BROKEN-TOP 24" BELOW THE ROAD SURFACE. FOUND NO EVIDENCE OF ANY OF THE WITNESSES. ACCEPTED THE HARRISON MONUMENT WITH A BROKEN-TOP AS THE BEST EVIDENCE OF THE CORNER LOCATION. SET 4 NEW TIES AND MEASURED TO THE TIES.



LOCATION

(INDICATE CORNER BY "X")

SEAL:



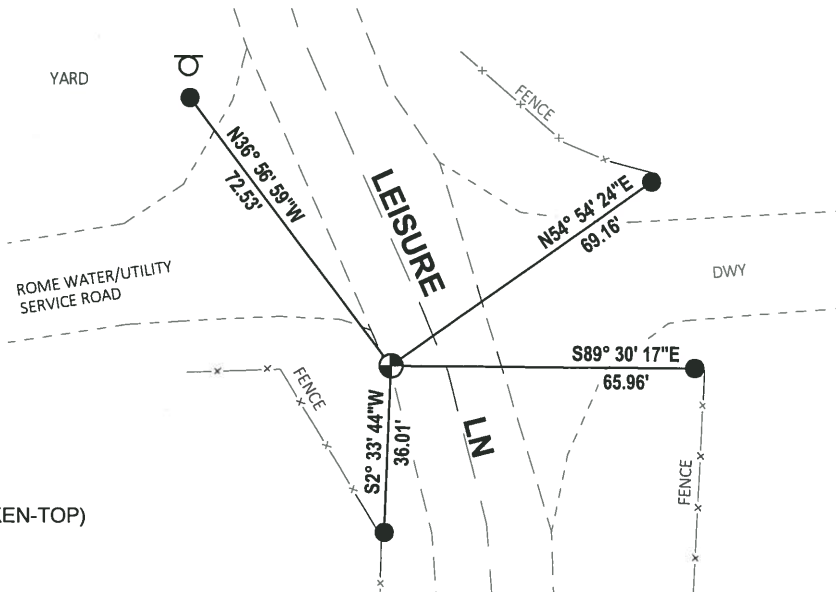
DATA SHOWN HERE ON THIS TIE SHEET IS CORRECT AND COMPLETE TO THE BEST OF MY KNOWLEDGE AND BELIEF.

PROFESSIONAL LAND SURVEYOR

DATE 7-18-18

- TIE SKETCH

NOTE: THE CORNER FALLS 11'± WEST OF THE CENTERLINE OF LEISURE LN.

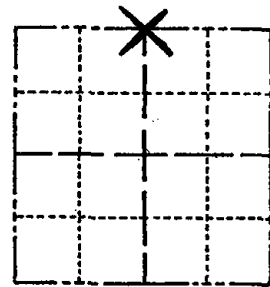


- SET 3/4" x 18" IRON REBAR, 1.50#/FT
- ⊕ FOUND HARRISON MONUMENT (BROKEN-TOP)
- Ⓧ SIGN (ARROW)

Government Land Corner Certificate

ADAMS County
 TYPE OF MONUMENT: STANDARD HARRISON Mon.
 STATE PLANE COORDINATES: N _____
 E _____
 ELEVATION — M.S.L. DATUM: _____
 THETA ANGLE: _____
 FIELD BOOK: _____ PAGE _____
 DRAWN BY: R NUBER

CORNER NO. 46
 SECTION 16
 TOWN 20
 RANGE 6



LOCATION
(Indicated by 'X')

BASIS FOR MONUMENT LOCATION

Show info such as: History of corner, with reference to Vol. and pg., dates, surveyor; exact description of monument replaced; if location computed, by taped or EDM traverse; landowner remarks, etc. (Use reverse side if necessary) *

Found 2" Iron Pipe as shown on ~~Scarlet Addition to Lake Sherwood~~. Accepted said 2" Pipe and replaced with Harrison Mon.

*CHESTER ADDITION TO LAKE CAMELOT

Ok 5-11-84 SS-DK

MON. FOUND ON WEST EDGE OF BITUMINOUS ROAD SURFACE 9.5' EAST OF ELECTRIC BOX, OK 5-24-89 GR-SS

3-11-94 OK GR-SS

8-31-04 3 NEW TIES - MON. BROKEN 8-31-04 SS
 4 TIES REMAIN 2-10-09 SS

SEAL:



DATA SHOWN HERE ON CERTIFIED CORRECT:

Wayne Saelen
Registered Land Surveyor

DATE: Nov. 1981

TIE SKETCH

Show at least four ties, also fence lines, roads, topo, size and type of 'witness trees' and if off road - best way to arrive at corner.

TOP NUT - CENTER OF FIRE HYDRANT 73.35' 104

