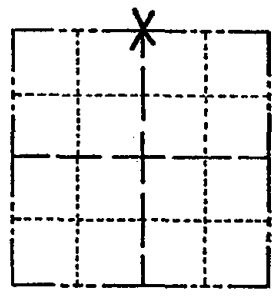


Government Land Corner Certificate

Adams County
 TYPE OF MONUMENT: HARRISON
 STATE PLANE COORDINATES: N _____
 E _____
 ELEVATION — M.S.L. DATUM: _____
 THETA ANGLE: _____
 FIELD BOOK: LL PAGE _____
 DRAWN BY: Basler

CORNER NO. 48
 SECTION 15
 TOWN 20
 RANGE 6E



LOCATION
(Indicated by 'X')

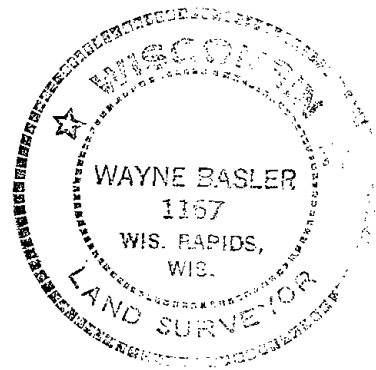
BASIS FOR MONUMENT LOCATION

Show info such as: History of corner, with reference to Vol. and pg., dates, surveyor; exact description of monument replaced; if location computed, by taped or EDM traverse; landowner remarks, etc. (Use reverse side if necessary)

Traversed Norht line of 15-20-6
 Searching failed to turn up any evidence
 of Original Corner or any remonumentation
 thereof.
 Set corner midway on a straight line between
 adjacent Section Corners.

7-27-84 Located harrison in beach area at Eisold
 lot # 315 first lot N. & E. of intersection of York
 Court & Penhurst Way - first lot west of dark green-
 ish house with wood rail fence. All Ok SS-DK
 SEE RHINEHART NEXT PAGE

SEAL:



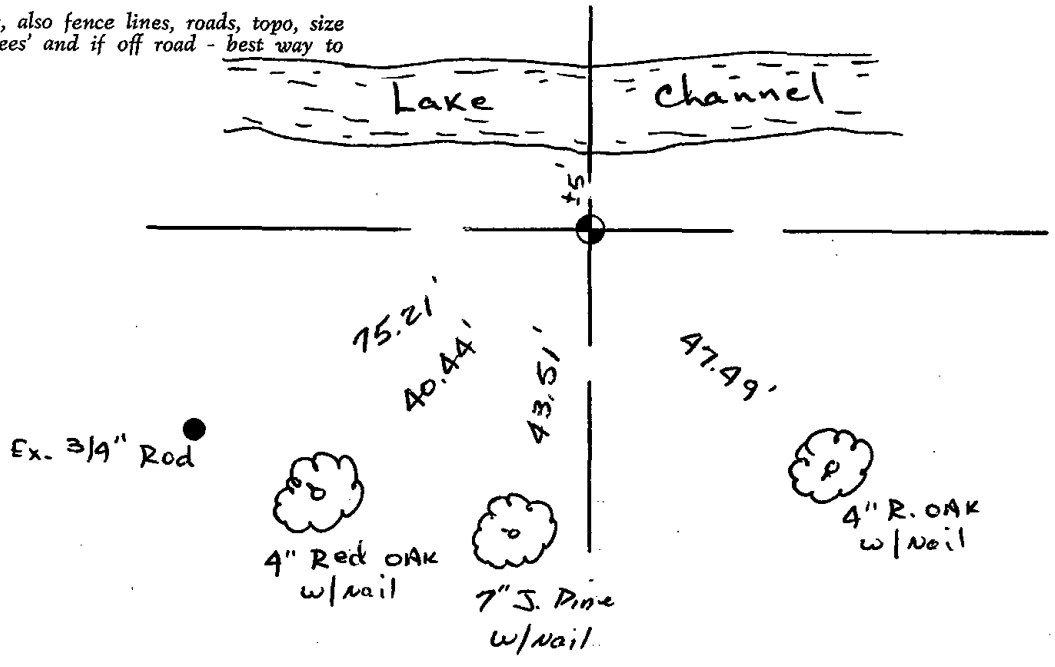
DATA SHOWN HERE ON
 CERTIFIED CORRECT:

Wayne Basler
 Registered Land Surveyor

DATE: Nov. 1981

TIE SKETCH

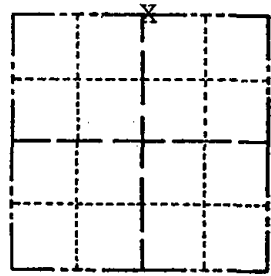
Show at least four ties, also fence lines, roads, topo, size and type of witness trees and if off road - best way to arrive at corner.



Government Land Corner Certificate

ADAMS County
 TYPE OF MONUMENT: Harrison
 STATE PLANE COORDINATES: N _____
 E _____
 ELEVATION — M.S.L. DATUM: _____
 THETA ANGLE: _____
 FIELD BOOK: _____ PAGE _____
 DRAWN BY: _____

CORNER NO. 48
 SECTION 15
 TOWN 20
 RANGE 6



LOCATION
(Indicated by 'X')

BASIS FOR MONUMENT LOCATION

Show info such as: History of corner, with reference to Vol. and pg., dates, surveyor; exact description of monument replaced; if location computed, by taped or EDM traverse; landowner remarks, etc. (Use reverse side if necessary)

The location of this corner was lost during landscape construction. The north line of Section 20 was traversed and Harrison monument reset midway on a straight line between adjacent section corners as per the original tie sheet.

SEAL:



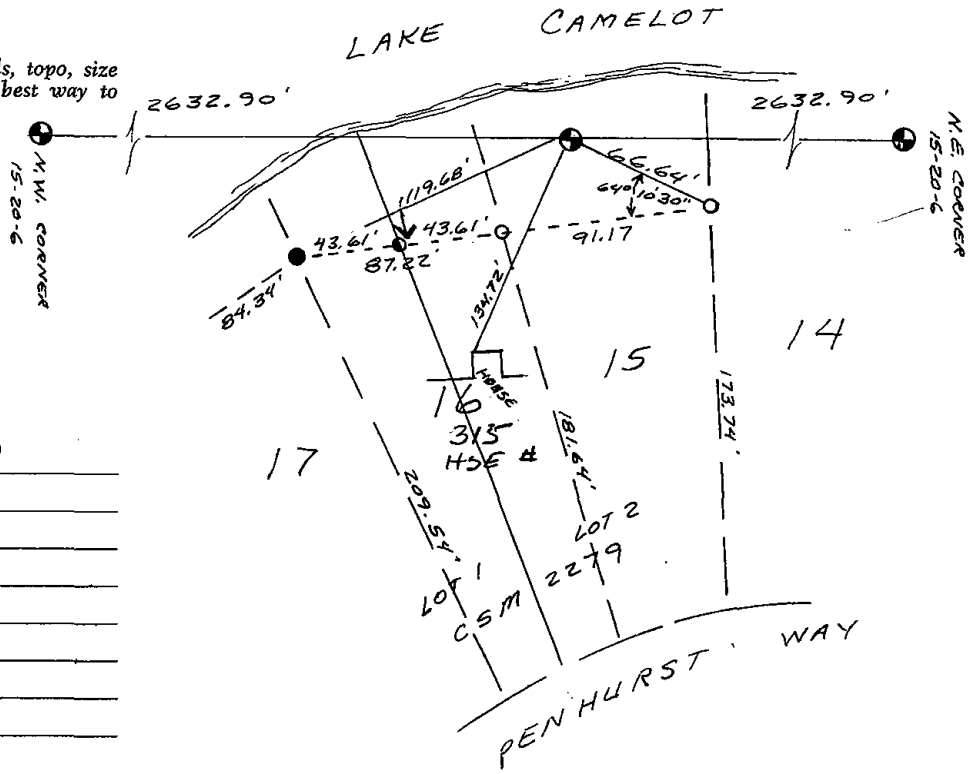
DATA SHOWN HERE ON
CERTIFIED CORRECT

Gregory P. Rhinehart
 Registered Land Surveyor

DATE: April 12, 1990

TIE SKETCH

Show at least four ties, also fence lines, roads, topo, size and type of witness trees' and if off road - best way to arrive at corner.



MAINTENANCE RECORD

Date	Init.	Remarks
3-01-94	GR-S	OK
2-24-99	JG	OK
8-31-04	SS	Mow Below H ₂ O
1-7-10	SS	TIES OK