

## PUBLIC LAND SURVEY MONUMENT RECORD

TYPE OF MONUMENT: HARRISON (BROKEN-TOP)  
 ADAMS COUNTY COORDINATES, NAD 83 (2007)

N. 308919.414

E. 551759.733

ELEVATION-      DATUM     

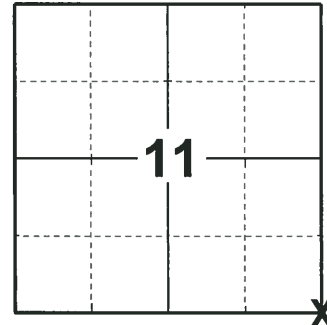
FIELD WORK DATE: 05/07/2018

### BASIS FOR MONUMENT LOCATION

1979 - PLS 1478 ACCEPTED EXISTING SPIKE AS THE CORNER. CAREFUL EVALUATION OF A TRAVERSE OF SECTION 13 AND SECTION 12 INDICATED THIS AS THE MOST CORRECT LOCATION FOR THE CORNER.

1979 - PLS 878 EXCAVATED WITH A BACKHOE AND FOUND NOTHING. NO RECORDS OF ANY OLD RESURVEYS. ACCEPTED EXISTING NAIL AS THE CORNER. THIS POINT IS USED IN SURVEYS OF LAKE CAMELOT SUBDIVISIONS AS WELL AS FIESTA WOODS PARCELS. MATCHES REMNANT OF OLD LINE FENCE TO THE EAST.

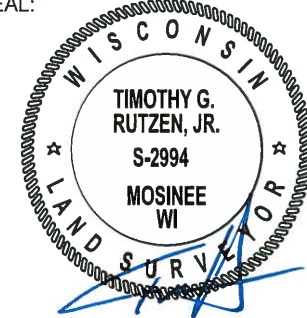
2018 - PLS 2994 FOUND A HARRISON MONUMENT WITH A BROKEN-TOP 16" BELOW THE ROAD SURFACE. FOUND NO EVIDENCE OF ANY OF THE WITNESSES. ACCEPTED THE HARRISON MONUMENT WITH A BROKEN-TOP AS THE BEST EVIDENCE OF THE CORNER LOCATION. SET 4 NEW TIES AND MEASURED TO THE TIES.



LOCATION

(INDICATE CORNER BY "X")

SEAL:



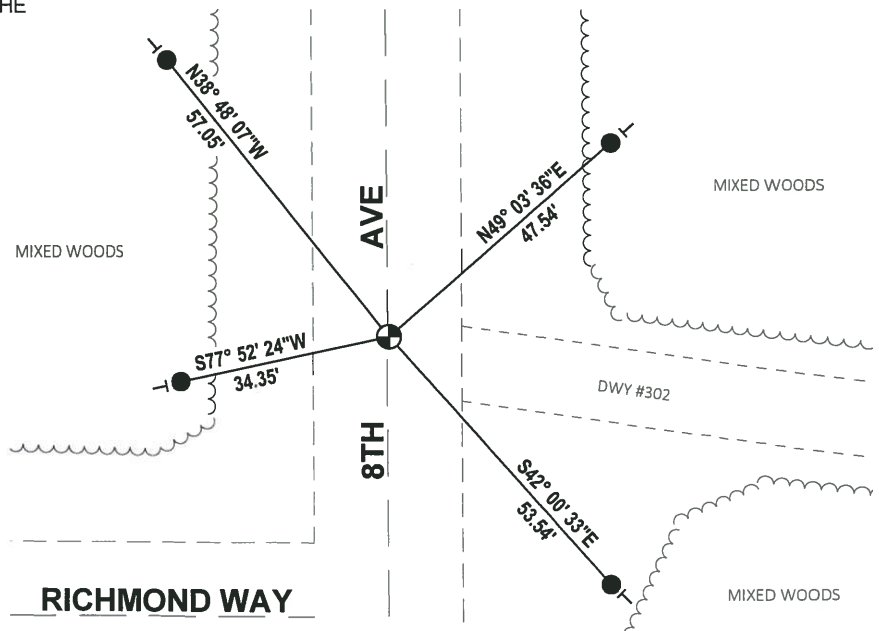
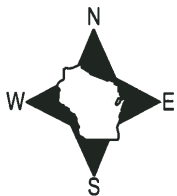
DATA SHOWN HERE ON THIS TIE SHEET IS CORRECT AND COMPLETE TO THE BEST OF MY KNOWLEDGE AND BELIEF.

PROFESSIONAL LAND SURVEYOR

DATE 7-18-18

### TIE SKETCH

NOTE: THE CORNER FALLS 1'± EAST OF THE CENTERLINE OF 8TH AVE AND 45'± NORTH OF THE CENTERLINE OF RICHMOND WAY.

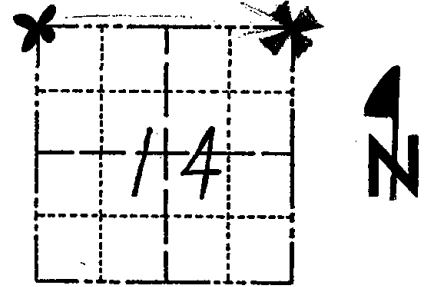


- SET 3/4" x 18" IRON REBAR, 1.50#/FT
- ⊕ FOUND HARRISON MONUMENT (BROKEN-TOP)
- ┊ VINYL "T" POST

# Government Land Corner Certificate

ADAMS County  
 TYPE OF MONUMENT: HARRISON  
 STATE PLANE COORDINATES: N \_\_\_\_\_  
 E \_\_\_\_\_  
 ELEVATION — M.S.L. DATUM: \_\_\_\_\_  
 THETA ANGLE: \_\_\_\_\_  
 FIELD BOOK: 64 PAGE 18  
 DRAWN BY: B. MERZ

CORNER NO. 51  
 SECTION 14  
 TOWN 20  
 RANGE 6



LOCATION  
(Indicated by 'X')

## BASIS FOR MONUMENT LOCATION

Show info such as: History of corner, with reference to Vol. and pg., dates, surveyor; exact description of monument replaced; if location computed, by taped or EDM traverse; landowner remarks, etc. (Use reverse side if necessary)

Excavated area with backhoe. Found nothing. No records of old resurveys. Accepted existing nail as the corner. This point used in surveys of Lake Camalot subdivisions as well as Fiesta Woods parcels. Matches remnant of old line fence to the east.

Ok 7-16-84 DK-MK

SEAL:



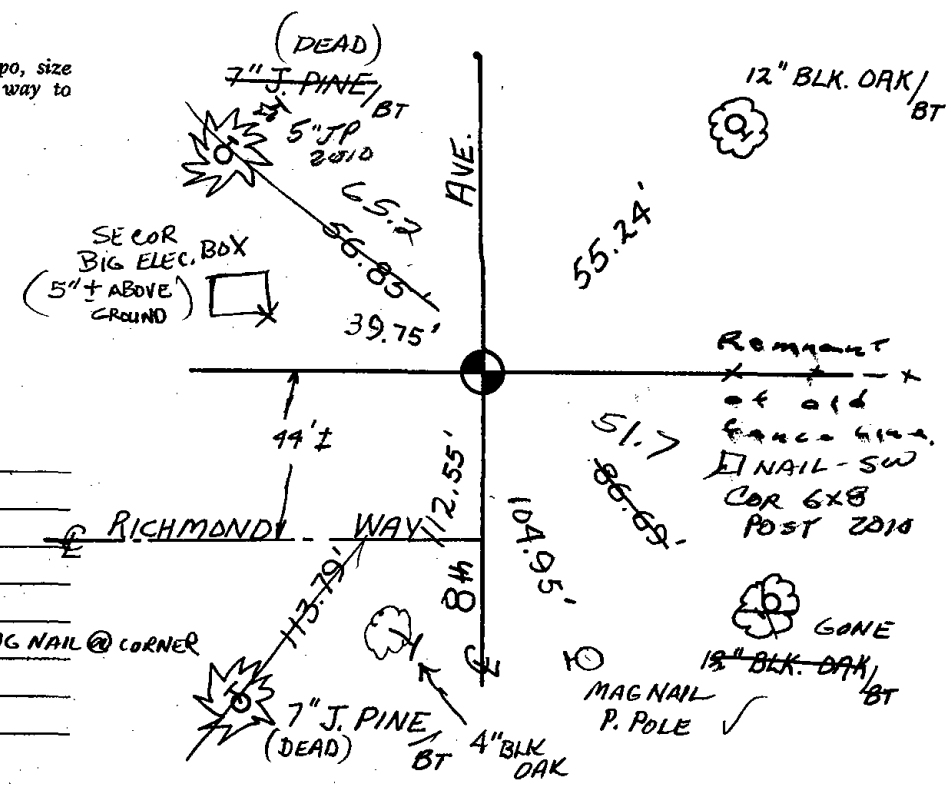
DATA SHOWN HERE ON  
CERTIFIED CORRECT:

Anthony B. Kiedrowski  
Registered Land Surveyor

DATE: 7/7/80

## TIE SKETCH

Show at least four ties, also fence lines, roads, topo, size and type of witness trees' and if off road - best way to arrive at corner.



## MAINTENANCE RECORD

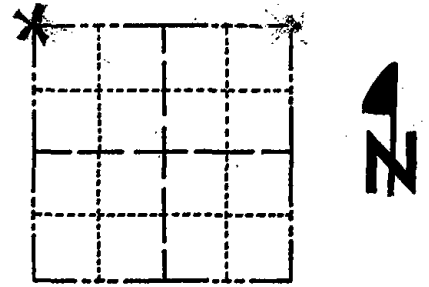
Date	Init.	Remarks
8-15-79	RN	OK
3-8-89	GR-SS	OK
3-31-94	JG-SS	"
2-24-04	JG	3-NEW, 1-GONE, MAG NAIL @ CORNER



# Government Land Corner Certificate

AOAMS County  
 TYPE OF MONUMENT: HARRISON STD.  
 STATE PLANE COORDINATES: N \_\_\_\_\_  
 E \_\_\_\_\_  
 ELEVATION — M.S.L. DATUM: \_\_\_\_\_  
 THETA ANGLE: \_\_\_\_\_  
 FIELD BOOK: 76 PAGE 8  
 DRAWN BY: ROGER NUBER

CORNER NO. 51  
 SECTION 13  
 TOWN 20  
 RANGE 6



LOCATION  
(Indicated by 'X')

## BASIS FOR MONUMENT LOCATION

Show info such as: History of corner, with reference to Vol. and pg., dates, surveyor; exact description of monument replaced; if location computed, by taped or EDM traverse; landowner remarks, etc. (Use reverse side if necessary)

Accepted existing spike as corner.  
 Careful evaluation of a traverse of Section 13 and section 12 indicated this as the most correct location for the corner.

SEAL:



DATA SHOWN HERE ON  
CERTIFIED CORRECT:

*Gregory P. Rhinehart*  
Registered Land Surveyor

DATE: 6/9/79

OK 4-19-84 RSK

SEE A. KIEDROWSKI  
7-7-79

## TIE SKETCH

Show at least four ties, also fence lines, roads, topo, size and type of witness trees and if off road - best way to arrive at corner.

