

12
SECTION

20
TOWN

06
RANGE

ADAMS COUNTY

COUNTY CORNER NO: 52

ROMPORTOL ID: 42006120020

PUBLIC LAND SURVEY MONUMENT RECORD

TYPE OF MONUMENT: HARRISON
ADAMS COUNTY COORDINATES, NAD 83 (2007)

N. 308897.506

E. 554406.538

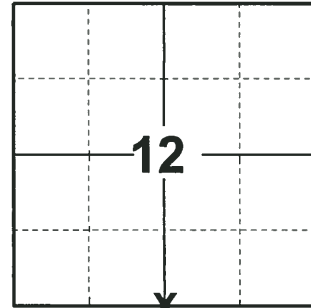
ELEVATION- DATUM

FIELD WORK DATE: 05/08/2018

BASIS FOR MONUMENT LOCATION

1978 - PLS 742 FOUND A PIPE SET BY CHENEY AS PART OF FIESTA PINES AND ALSO SHOWN BY VREELAND ON DEER FIELD PARK. DIMENSIONS TO THE PIPE DID NOT CHECK USING THESE SURVEYS. CALCULATED A LOCATION USING A SPLIT DISTANCE BETWEEN NW CORNER (HARRISON TO BE SET BY KIEDROWSKI) AND NE CORNER (HARRISON TO BE SET BY KIEDROWSKI). THIS LOCATION IS ON AN OLD E-W FENCE AND WITHIN 5 FEET OF AN OLD N-S FENCE (WIRES IN TIE TREE TO SOUTH OF MONUMENT). E.D.M. TRAVERSE TIED TO KIEDROWSKI CONTROL. SET HARRISON AT CALCULATED LOCATION AND TIED OUT.

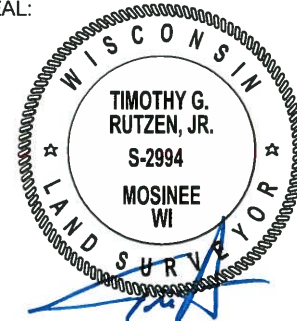
2018 - PLS 2994 FOUND A HARRISON MONUMENT 4" ABOVE THE GROUND SURFACE. FOUND NO EVIDENCE OF ANY OF THE WITNESSES. ACCEPTED THE HARRISON MONUMENT AS THE BEST EVIDENCE OF THE CORNER LOCATION. SET 4 NEW TIES AND MEASURED TO THE TIES.



LOCATION

(INDICATE CORNER BY "X")

SEAL:

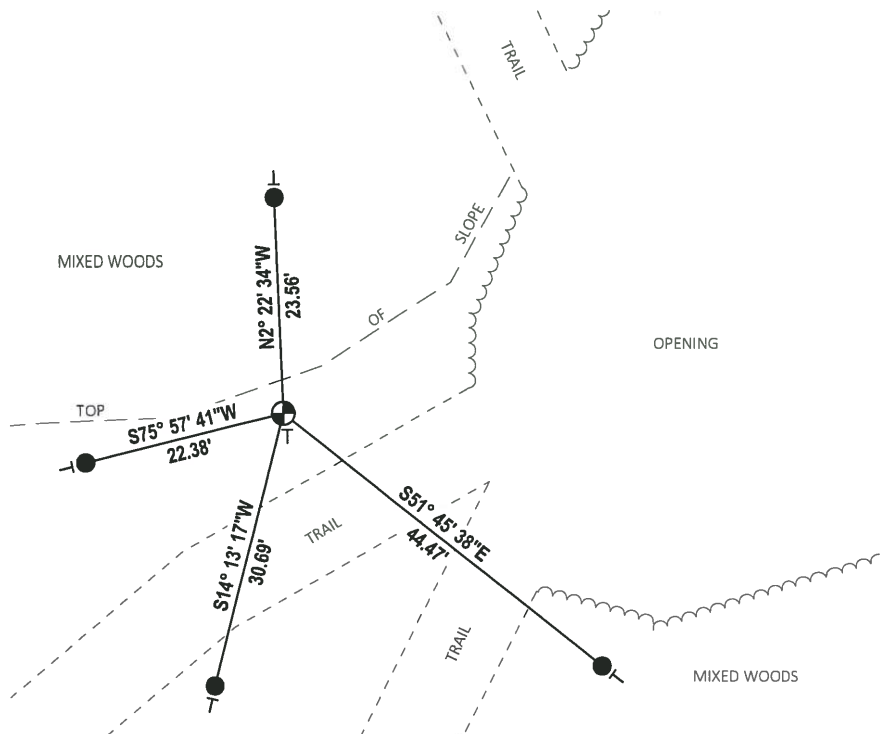


DATA SHOWN HERE ON THIS TIE SHEET IS CORRECT AND COMPLETE TO THE BEST OF MY KNOWLEDGE AND BELIEF.

PROFESSIONAL LAND SURVEYOR

DATE 7-18-18

TIE SKETCH



- SET 3/4" x 18" IRON REBAR, 1.50#/FT
- ⊕ FOUND HARRISON MONUMENT
- ┆ VINYL "T" POST

ADAMS COUNTY

Survey Monument Record

TYPE OF MONUMENT: Harrison

STATE PLANE COORDINATES: N _____

E _____

ELEVATION — M.S.L. DATUM: _____

THETA ANGLE: _____

FIELD BOOK: _____ PAGE _____

K. Carlson

BASIS FOR MONUMENT LOCATION

(Use reverse side if necessary)

Show info such as: History of corner, with reference to Vol. and pg, dates, surveyor; exact description of monument replaced; if location computed, by taped or EDM traverse; landowner remarks, etc.

History - found pipe set by Cheney as part of Fiesta Pines and shown by Vreeland on Deer field Park. Dimensions to this pipe did not check these surveys. Split distance between NW cor (Harrison to be set by Kiedrowski) and NE cor (Harrison to be set by Kiedrowski). This point is on an old E-W fence and within 5 feet of an old N-S fence (wires in tie tree to south of monument).

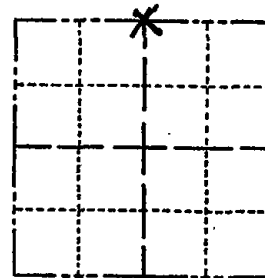
EDM traverse tied to Kiedrowski control

CORNER NO. 52

SECTION 13

TOWN 20 N

RANGE 6 E



LOCATION (Indicated by 'X')

SEAL:



CERTIFIED CORRECT:

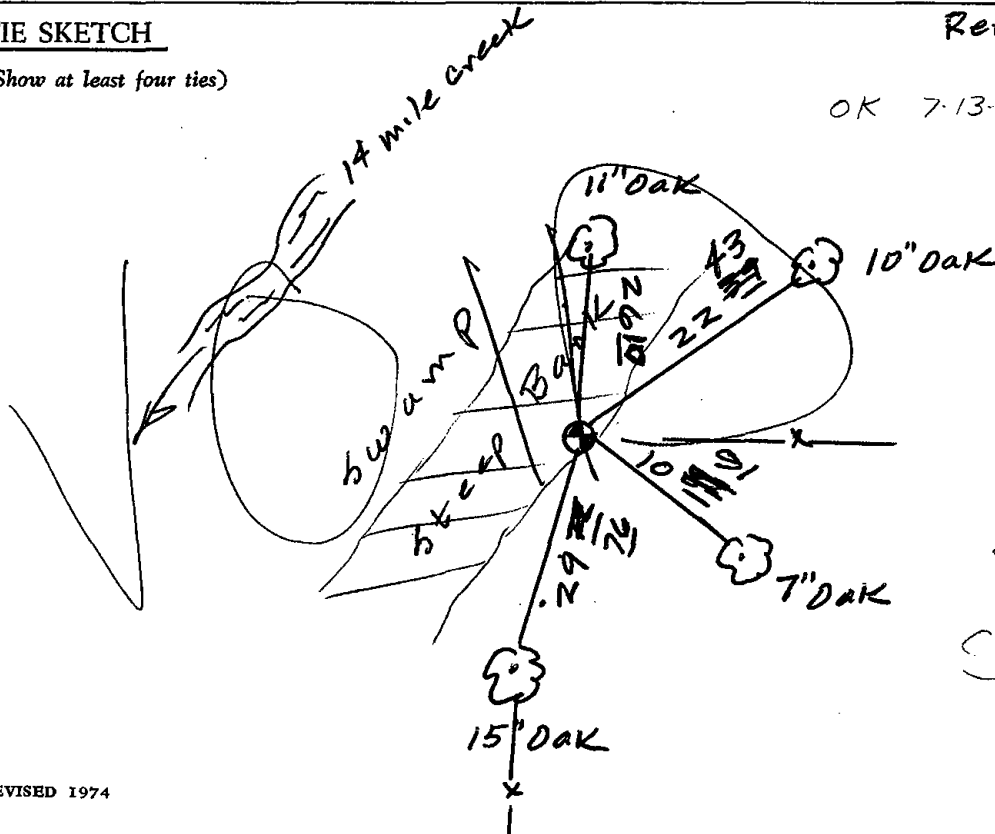
Kenneth G. Carlson
Registered Land Surveyor

DATE: June 20, 1978

Revised June 21, 1979 *JGC*

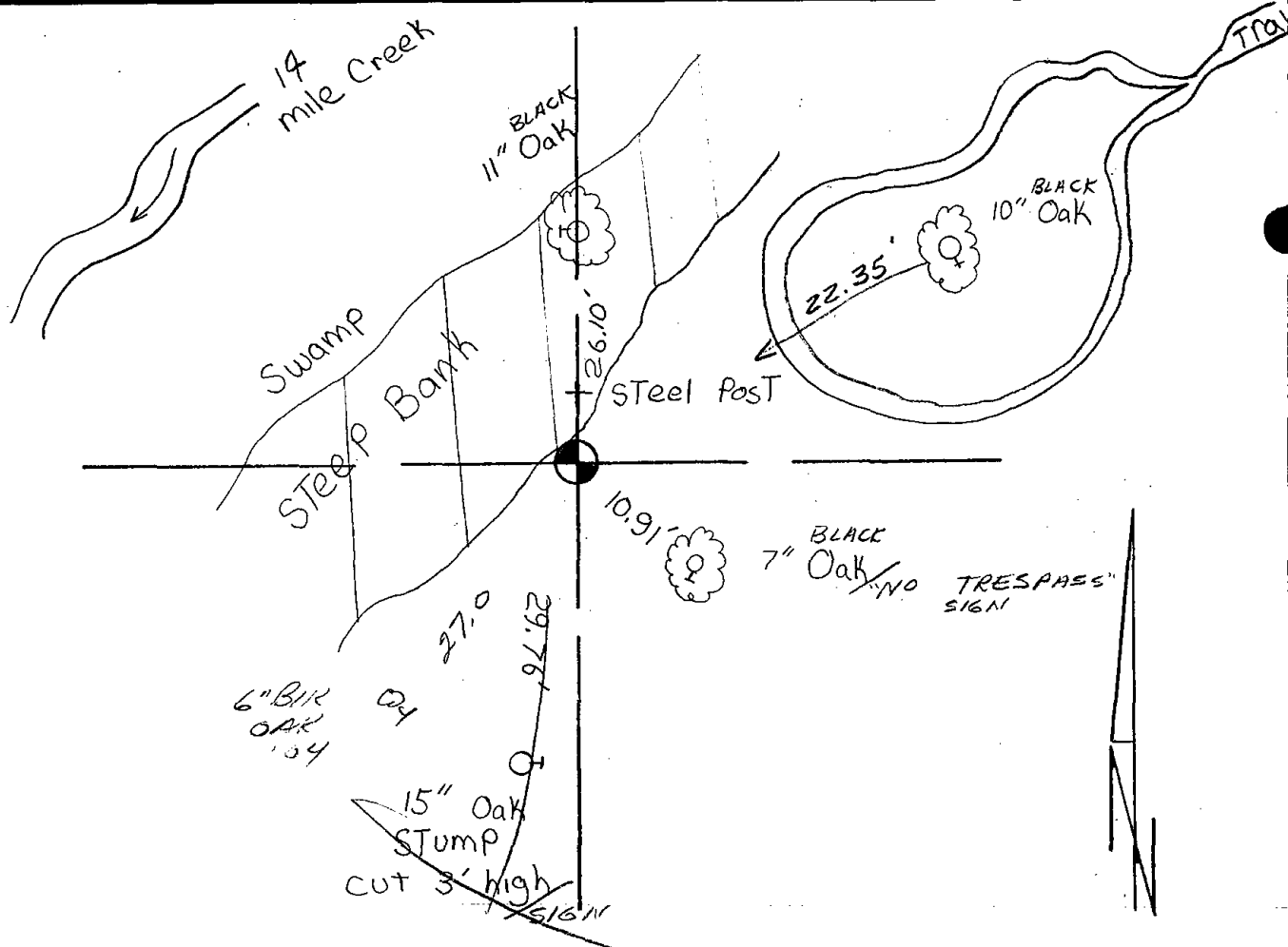
TIE SKETCH

(Show at least four ties)



OK 7-13-79 RW-RN

see Reverse side



Map updated on the 28 th day of June, 1984 SS-MK

to find harrison enter trail off of CTH "D" 600-800 feet N. of Corner go past 2 windrows and enter wooded trail in SE corner of a cultivated field. Trail may be walked or take 4wDr on to the harrison

OK 5-17-89 SS

OK 4/21/99 JG-SS

1 NEW TIE 8-31-04 SS - 6' TALL 2x4 @ MON.