

PUBLIC LAND SURVEY MONUMENT RECORD

TYPE OF MONUMENT: HARRISON
 ADAMS COUNTY COORDINATES, NAD 83 (2007)

N. 308875.141

E. 557053.126

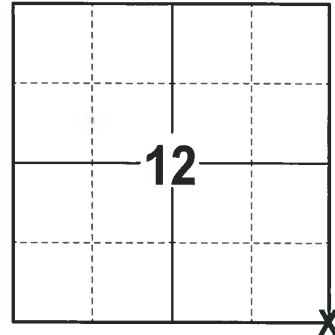
ELEVATION- --- DATUM ---

FIELD WORK DATE: 02/05/2018

BASIS FOR MONUMENT LOCATION

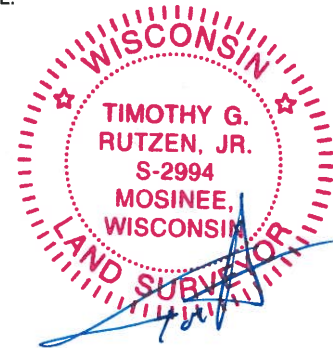
1979 - PLS 1478 FOUND LIVING RECORD BEARING TREE AND STUMP HOLE FROM THE SECOND BEARING TREE AS RECORDED IN VOL. 2 PAGE 165 OF THE ADAMS COUNTY SURVEYOR RECORDS. EXCAVATION BY HAND AT THIS LOCATION YIELDED NOTHING. SET A HARRISON MONUMENT FROM THE FOUND BEARING TREES AND RE-TIED CORNER.

2018 - PLS 2994 FOUND HARRISON MONUMENT 4" BELOW THE GROUND SURFACE AND 1 TIE. THE MONUMENT AGREES WITH THE EXISTING TIE. ACCEPTED THE HARRISON MONUMENT AS THE CORNER LOCATION. SET 3 NEW TIES AND MEASURED TO THE TIES.



LOCATION
 (INDICATE CORNER BY "X")

SEAL:



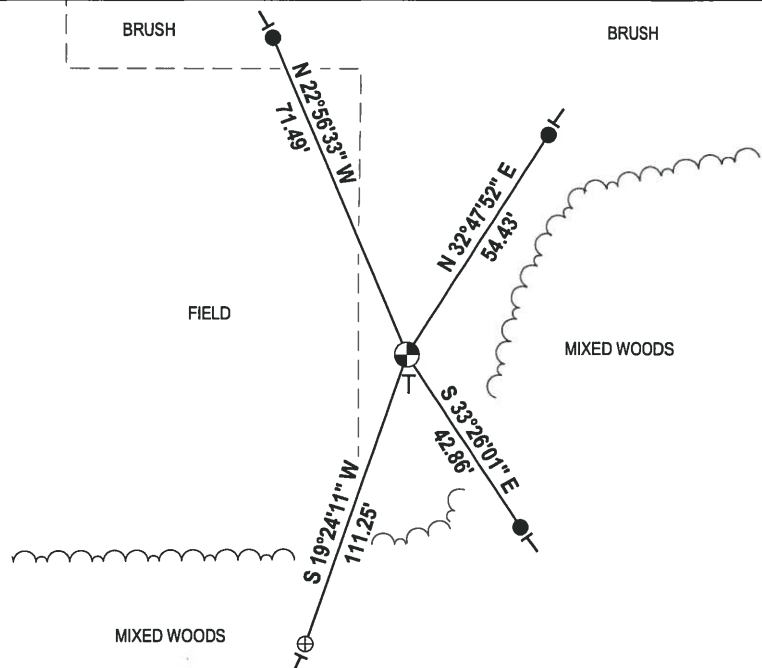
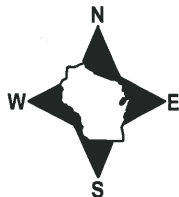
DATA SHOWN HERE ON THIS TIE SHEET IS CORRECT AND COMPLETE TO THE BEST OF MY KNOWLEDGE AND BELIEF.

PROFESSIONAL LAND SURVEYOR

DATE 3-1-18

- TIE SKETCH

NOTE: THERE IS A 1-1/2" O.D. IRON PIPE 12" ABOVE THE GROUND ON WEST EDGE OF THE HARRISON.

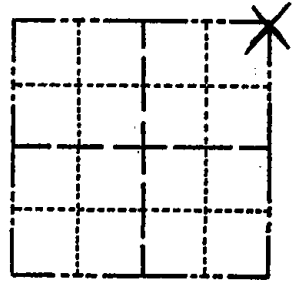


- ⊕ 1-1/4" O.D. IRON PIPE FOUND
- 3/4" x 18" IRON REBAR SET, 1.50#/FT
- ⊕ HARRISON FOUND
- └ VINYL "T" POST

Government Land Corner Certificate

ADAMS County
 TYPE OF MONUMENT: Harrison Monument
 STATE PLANE COORDINATES: N _____
 E _____
 ELEVATION — M.S.L. DATUM: _____
 THETA ANGLE: _____
 FIELD BOOK: 76 & 60 PAGE (70) 9 (60) 24
 DRAWN BY: ROGER NUMBER

CORNER NO. 55
 SECTION 13
 TOWN 20
 RANGE 6



LOCATION
(Indicated by 'X')

SEAL:



DATA SHOWN ~~HERE~~ ON
 CERTIFIED CORRECT:

Gregory P. Rhinehart
 Registered Land Surveyor

DATE: 6/4/79

BASIS FOR MONUMENT LOCATION

Show info such as: History of corner, with reference to Vol. and pg., dates, surveyor; exact description of monument replaced; if location computed, by taped or EDM traverse; landowner remarks, etc. (Use reverse side if necessary)

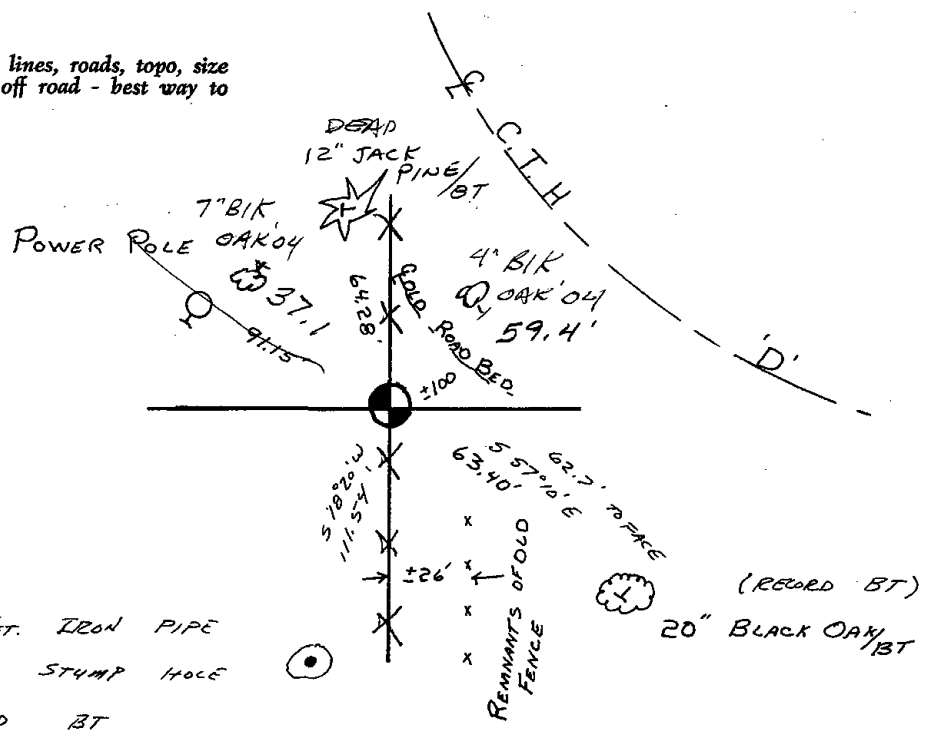
Found living record bearing tree and stump hole from second bearing tree as recorded in Vol. 2 page 165 of the Adams County Surveyor Records. Excavation by hand at this location yielded nothing. Set harrison monument from bearing trees.

OK 6-28-84 MK-SS
 OK 5-17-89 SS

TIE SKETCH

Show at least four ties, also fence lines, roads, topo, size and type of witness trees and if off road - best way to arrive at corner.

1 1/2" IRON PIPE FOUND IMMEDIATELY WEST OF HARRISON (1989)



1" X 24" X 1.68 FT. IRON PIPE
 SET IN STUMP HOLE
 OF RECORD BT

