

## PUBLIC LAND SURVEY MONUMENT RECORD

TYPE OF MONUMENT: HARRISON  
 ADAMS COUNTY COORDINATES, NAD 83 (2007)

N. 306157.379

E. 541205.116

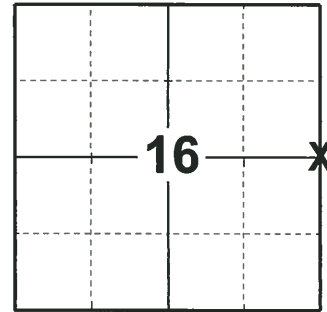
ELEVATION:      DATUM     

FIELD WORK DATE: 05/09/2018

### BASIS FOR MONUMENT LOCATION

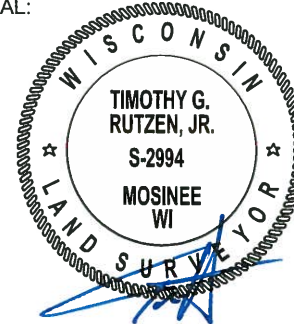
1981 - PLS 1167 CALCULATED CORNER FROM INFORMATION SUPPLIED FROM RLS #699, AND DATA SHOWN ON INVERNESS ADDITION TO LAKE CAMELOT. THIS METHOD FIT THE AREA OF POSSESSION. SET HARRISON AND TIED OUT.

2018 - PLS 2994 FOUND A HARRISON MONUMENT 1" BELOW THE ROAD SURFACE, 1 TIE AND 2 PROPERTY IRONS. THE MONUMENT AGREES WITH THE EXISTING TIE. ACCEPTED THE HARRISON MONUMENT AS THE CORNER LOCATION. SET 1 NEW TIE AND MEASURED TO THE TIES.



**LOCATION**  
 (INDICATE CORNER BY "X")

SEAL:



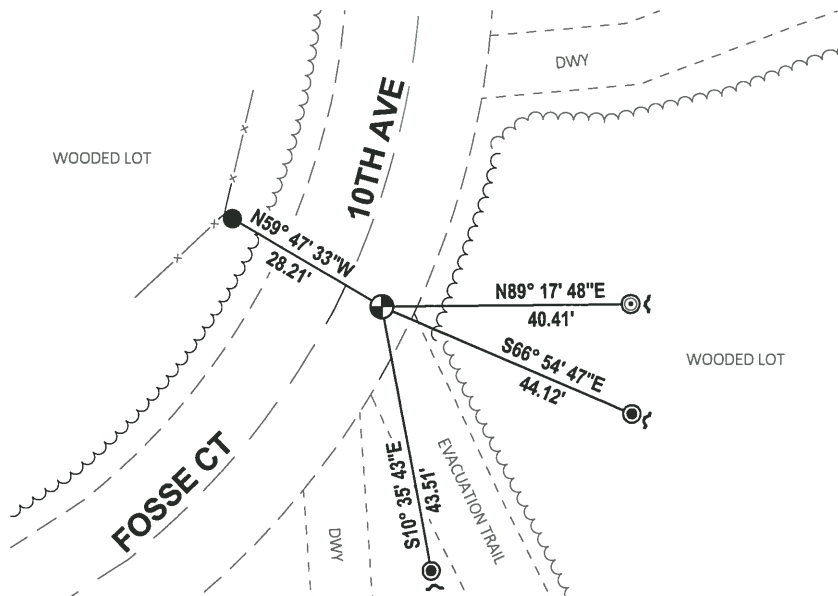
DATA SHOWN HERE ON THIS TIE SHEET IS CORRECT AND COMPLETE TO THE BEST OF MY KNOWLEDGE AND BELIEF.

PROFESSIONAL LAND SURVEYOR

DATE 7-18-18

### - TIE SKETCH

NOTE: THE CORNER FALLS 7± EAST OF THE CENTERLINE OF FOSSE CT/10TH AVE.

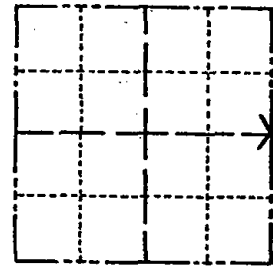


- SET 3/4" x 18" IRON REBAR, 1.50#/FT
- ⊙ FOUND 1-1/4" IRON ROD
- ⊙ FOUND 2-3/8" O.D. IRON PIPE
- ⊙ FOUND HARRISON MONUMENT
- ~ STEEL FENCE POST

# Government Land Corner Certificate

Adams County  
 TYPE OF MONUMENT: HARRISON  
 STATE PLANE COORDINATES: N \_\_\_\_\_  
 E \_\_\_\_\_  
 ELEVATION — M.S.L. DATUM: \_\_\_\_\_  
 THETA ANGLE: \_\_\_\_\_  
 FIELD BOOK: LL. PAGE \_\_\_\_\_  
 DRAWN BY: Basler

CORNER NO. 57  
 SECTION 16  
 TOWN 20  
 RANGE 6E



LOCATION  
(Indicated by 'X')

## BASIS FOR MONUMENT LOCATION

Show info such as: History of corner, with reference to Vol. and pg., dates, surveyor; exact description of monument replaced; if location computed, by taped or EDM traverse; landowner remarks, etc. (Use reverse side if necessary)

Set corner from information supplied from RLS #699, and data shown on Inverness Add. to Lake Camalot.  
 This method fits the area and possession.

OK 7-16-84 DK-MK

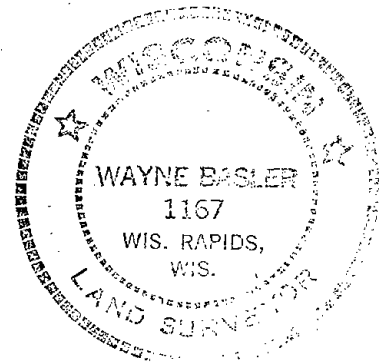
1 NEW TIE 5-17-89 SS

OK 3/6/94 GLSS

2 NEW TIES 8-31-04 SS

4 TIES REMAIN 2-10-09. SS

SEAL:



DATA SHOWN HERE ON  
 CERTIFIED CORRECT:

Wayne Basler  
 Registered Land Surveyor

DATE: Nov. 1981

## TIE SKETCH

Show at least four ties, also fence lines, roads, topo, size and type of witness trees and if off road - best way to arrive at corner.

