

PUBLIC LAND SURVEY MONUMENT RECORD

TYPE OF MONUMENT: HARRISON
 ADAMS COUNTY COORDINATES, NAD 83 (2007)

N. 303398.650
 E. 527988.460

ELEVATION- - - - - DATUM - - - - -

FIELD WORK DATE: 05/10/2018

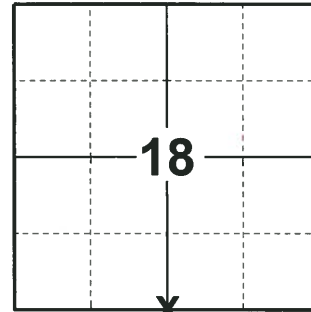
BASIS FOR MONUMENT LOCATION

1975 - PLS 1103 RAN EDM/TRANSIT TRAVERSE AROUND SECTION 19 TO DETERMINE SEARCH AREAS FOR THE CORNERS. EXCAVATED BY HAND AND FOUND A 1-1/2" BY 30" IRON PIPE. COULD NOT FIND ANY RECORD OF THE PIPE OR ANY OTHER EVIDENCE OF RE-MONUMENTATION. MONUMENTED THE PIPE WITH A STANDARD HARRISON MONUMENT AND TIED OUT.

1984 - PLS (UNKNOWN) STATES THAT ONLY TWO OF THE TIES REMAIN. CAN NOT FIND THE HARRISON AND CAN NOT RE-SET AS THE CURRENT TIES WILL CROSS TO PRODUCE AN INTERSECTION.

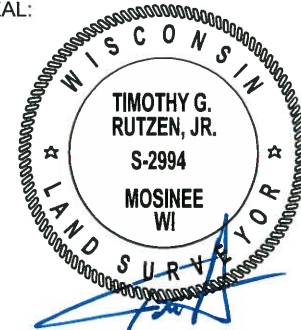
1999 - PLS (UNKNOWN) FOUND MONUMENT, SETS 3 NEW TIES, STATES 2 ARE GONE.

2018 - PLS 2994 FOUND A HARRISON MONUMENT 12" BELOW THE ROAD SURFACE AND 1 TIE. THE MONUMENT AGREES WITH THE EXISTING TIE. ACCEPTED THE HARRISON MONUMENT AS THE CORNER LOCATION. SET 3 NEW TIES AND MEASURED TO THE TIES.



LOCATION
 (INDICATE CORNER BY "X")

SEAL:



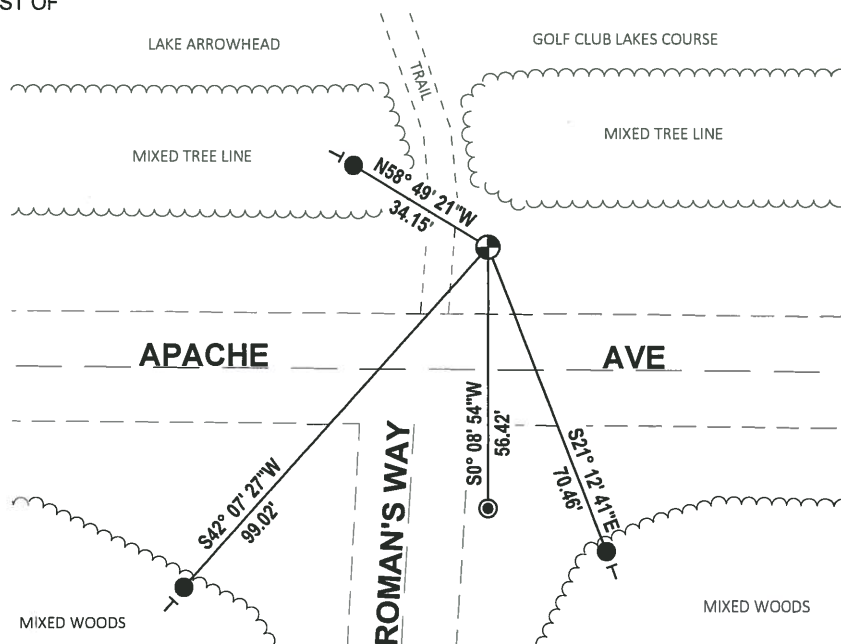
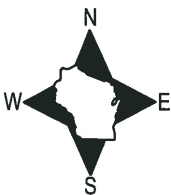
DATA SHOWN HERE ON THIS TIE SHEET IS CORRECT AND COMPLETE TO THE BEST OF MY KNOWLEDGE AND BELIEF.

PROFESSIONAL LAND SURVEYOR

DATE 7-18-18

TIE SKETCH

NOTE: THE CORNER FALLS 27± NORTH OF THE CENTERLINE OF APACHE AVE AND 14± EAST OF THE CENTERLINE OF ROMAN'S WAY.



- SET 3/4" x 18" IRON REBAR, 1.50#/FT
- ⊙ FOUND 1-1/4" IRON ROD
- ⊙ FOUND HARRISON MONUMENT
- VINYL "T" POST

ADAMS COUNTY

Survey Monument Record

TYPE OF MONUMENT: Standard Harrison

STATE PLANE COORDINATES: N _____

E _____

ELEVATION — M.S.L. DATUM: _____

THETA ANGLE: _____

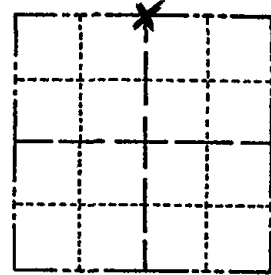
FIELD BOOK: _____ PAGE _____

CORNER NO. 699 ⁽⁶²⁾

SECTION 19

TOWN 20

RANGE 6



LOCATION
(Indicated by 'X')

SEAL:



BASIS FOR MONUMENT LOCATION

(Use reverse side if necessary)

Show info such as: History of corner, with reference to Vol. and pg, dates, surveyor; exact description of monument replaced; if location computed, by taped or EDM traverse; landowner remarks, etc.

Ran EDM/transit traverse around Section 19 to determine search areas for corner.

Excavation by hand yielded 1-1/2" by 30" Iron Pipe.

Could find no record of the pipe or any other monumentation or evidence of remonumentation.

Remonumented pipe with Standard Harrison Monument.

Only two ties remain - can not find the harrison and can not reset as the current ties will cross to produce an intersection. NEEDS WORK! 4-25-84

SEE CARLSON TIE SHEET 12-31-84

OK 1-18-89 SS

OK 2-11-94 CR-SS

2-GONE, 3-NEW TIES, MON. OK 1-11-99-JG-JF

OK, 2-26-04-JG

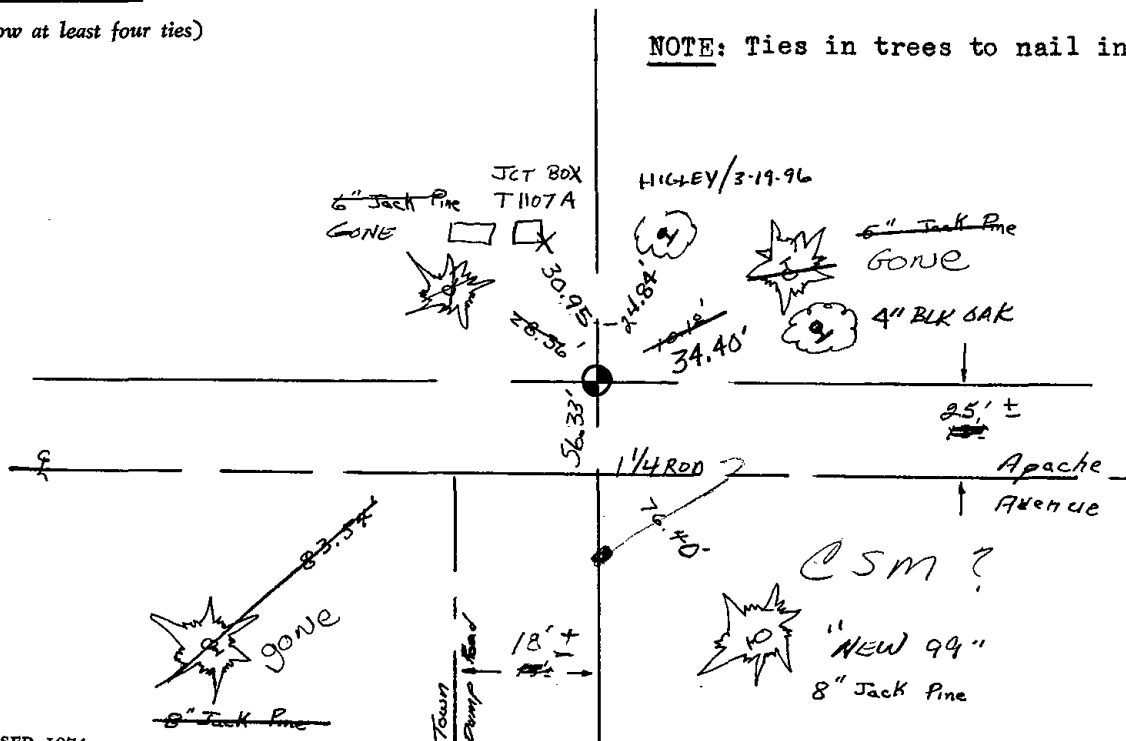
CERTIFIED CORRECT:

Dale C Hagen
Registered Land Surveyor
DATE: 2/1/75

TIE SKETCH OK 1-11-10 SS

(Show at least four ties)

NOTE: Ties in trees to nail in disc.



ADAMS COUNTY

Survey Monument Record

TYPE OF MONUMENT: Standard Harrison

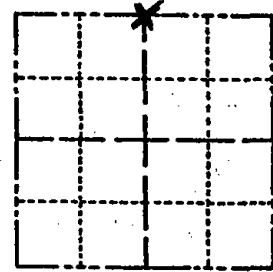
STATE PLANE COORDINATES: N _____
E _____

ELEVATION -- M.S.L. DATUM: _____

THETA ANGLE: _____

FIELD BOOK: _____ PAGE _____

CORNER NO. 699
SECTION 19
TOWN 20
RANGE 6



LOCATION
(Indicated by 'X')

SEAL:



BASIS FOR MONUMENT LOCATION

(Use reverse side if necessary)

Show info such as: History of corner, with reference to Vol. and pg, dates, surveyor; exact description of monument replaced; if location computed, by taped or EDM traverse; landowner remarks, etc.

Ran EDM/transit traverse around Section 19 to determine search areas for corner.

Excavation by hand yielded 1-1/2" by 30" Iron Pipe.

Could find no record of the pipe or any other monumentation or evidence of remonumentation.

Remonumented pipe with Standard Harrison Monument.

CERTIFIED CORRECT:

Dale C. Hasen

Registered Land Surveyor

DATE: 2/11/75

3-19-76 NEW TIES *Steve Hylley*

TIE SKETCH

(Show at least four ties)

NOTE: Ties in trees to nail in disc.

