

PUBLIC LAND SURVEY MONUMENT RECORD

TYPE OF MONUMENT: HARRISON (BROKEN-TOP)
 ADAMS COUNTY COORDINATES, NAD 83 (2007)

N. 303433.652

E. 533284.150

ELEVATION- - - - - DATUM - - - - -

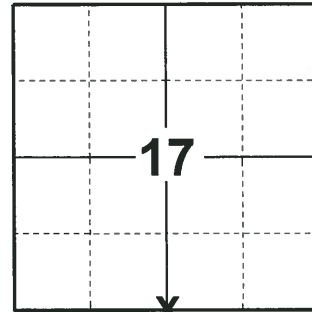
FIELD WORK DATE: 05/09/2018

BASIS FOR MONUMENT LOCATION

1975 - PLS 922 FOUND A 1"x30" IRON PIPE BENT OVER UNDER A STUMP BURIED 30". IT APPEARED THAT IT WAS BENT OVER DURING THE CONSTRUCTION OF HIGHWAY 13. THIS LOCATION FITS EDM TRAVERSE GOOD IN ALL DIRECTIONS. ACCEPTED AS CORNER AND TIED OUT.

2008 - PLS 2663 PRIOR TO ROAD CONSTRUCTION OF STH 13, FOUND HARRISON MONUMENT INTACT. ACCEPTED THE HARRISON AS THE CORNER AND TIED OUT. AFTER THE COMPLETION OF THE ROAD CONSTRUCTION RE-SET A 30" HARRISON MONUMENT AND FOUR NEW WITNESS MONUMENTS AT THE REQUEST OF THE PROJECT ENGINEER FOR WIS. D.O.T. PROJECT NO. 6140-00-73. REMOVED THE 3/4" REBAR TIES FROM PREVIOUS TIE SHEET AND SET NEW WIS. D.O.T. ALUMINUM CAP MONUMENTS IN CONCRETE AND RE-TIED CORNER. CONCRETE HAS TWO 30" REBARS FOR METAL DETECTION.

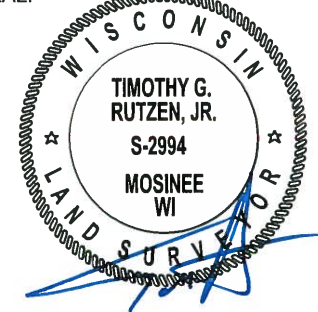
2018 - PLS 2994 FOUND A HARRISON MONUMENT WITH A BROKEN-TOP 24" BELOW THE GROUND SURFACE AND 3 TIES. THE MONUMENT AGREES WITH THE EXISTING TIES. ACCEPTED THE HARRISON MONUMENT WITH A BROKEN-TOP AS THE CORNER LOCATION. SET 1 NEW TIE AND MEASURED TO THE TIES.



LOCATION

(INDICATE CORNER BY "X")

SEAL:



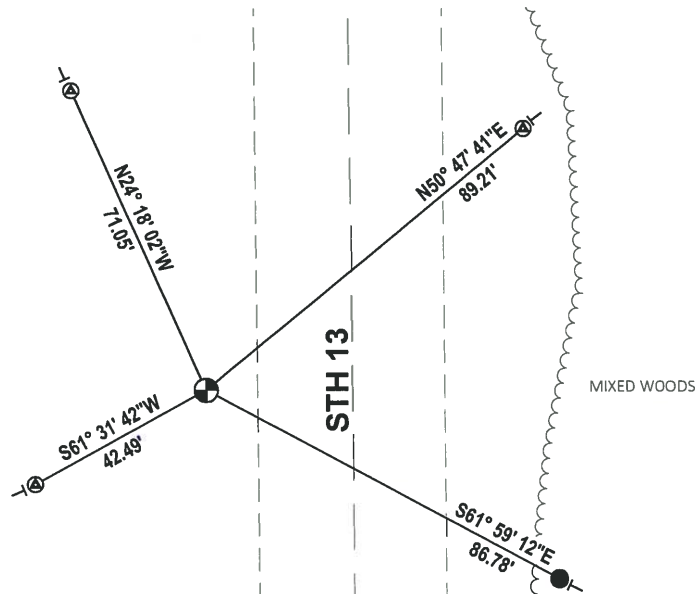
DATA SHOWN HERE ON THIS TIE SHEET IS CORRECT AND COMPLETE TO THE BEST OF MY KNOWLEDGE AND BELIEF.

PROFESSIONAL LAND SURVEYOR

DATE 7-18-18

- TIE SKETCH -

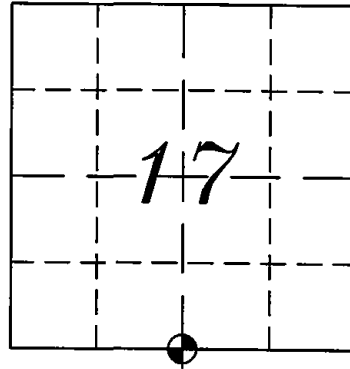
NOTE: THE CORNER FALLS 32± WEST OF THE CENTERLINE OF STH 13.



- SET 3/4" x 18" IRON REBAR, 1.50#/FT
- ⊕ FOUND WISDOT ALUMINUM CAP IN CONCRETE
- ⊕ FOUND HARRISON MONUMENT (BROKEN-TOP)
- | VINYL "T" POST

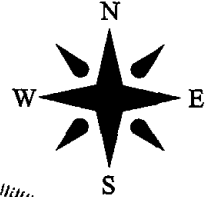
ADAMS COUNTY
SURVEY MONUMENT RECORD

TYPE OF MONUMENT: HARRISON
 STATE PLANE COORDINATES: N _____
 E _____
 ELEVATION: _____
 FIELD BOOK: _____ PAGE _____



CORNER NO. 795 (64)

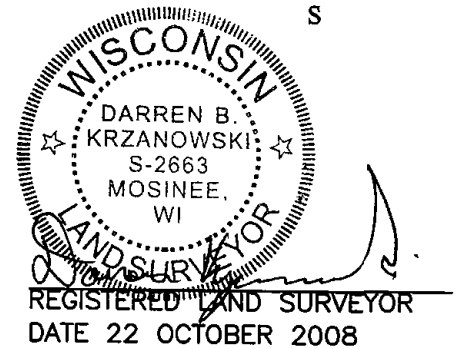
SECTION 17
 TOWN 20 NORTH
 RANGE 6 EAST
 ROME
 CITY, VILLAGE, TOWN



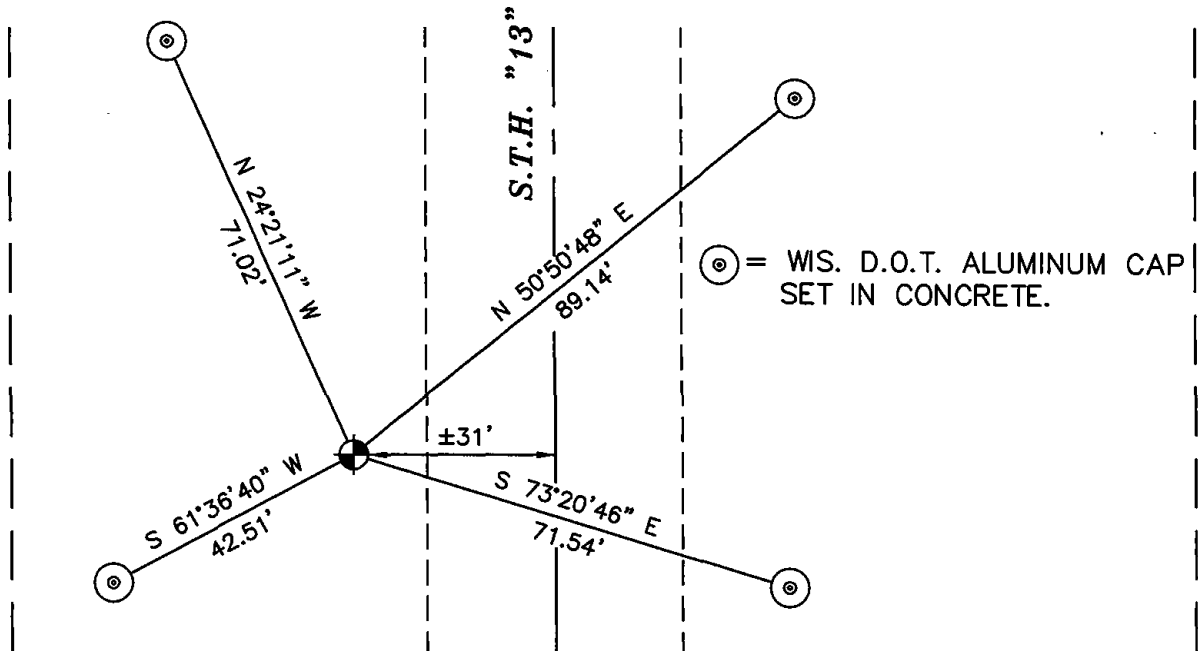
BASIS FOR CORNER LOCATION:

PRIOR TO ROAD CONSTRUCTION OF STH 13. FOUND HARRISON MONUMENT INTACT AND ACCEPTED HAS CORNER AND TIED OUT. AFTER THE COMPLETION OF THE ROAD CONSTRUCTION SET A 30in. HARRISON MONUMENT AND FOUR NEW WITNESS MONUMENTS.

AT THE REQUEST OF THE PROJECT ENGINEER FOR WIS DOT PROJECT NO. 6140-00-73. REMOVED 3/4in. REBAR FROM PREVIOUS TIE SHEET AND SET WIS. D.O.T. ALUMINUM CAP IN CONCRETE. CONCRETE HAS TWO 30in. REBARS FOR METAL DETECTION.



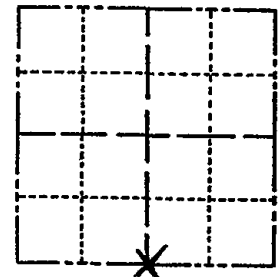
TIE SKETCH



ADAMS COUNTY
Survey Monument Record

CORNER NO. 795⁽⁶⁴⁾
 SECTION 17
 TOWN 20-N
 RANGE 6E

TYPE OF MONUMENT: 30"
 STATE PLANE COORDINATES: N _____
 E _____
 ELEVATION — M.S.L. DATUM: _____
 THETA ANGLE: _____
 FIELD BOOK: _____ PAGE _____



LOCATION
 (Indicated by 'X')

SEAL:

BASIS FOR MONUMENT LOCATION

(Use reverse side if necessary)

Show info such as: History of corner, with reference to Vol. and pg. dates, surveyor; exact description of monument replaced; if location computed, by taped or EDM traverse; landowner remarks, etc.

WITH THE USE OF AN ELECTRONIC METAL LOCATOR, WE FOUND A 1"X30" IRON PIPE BENT OVER UNDER A STUMP BURIED 30". IT APPEARED AS IT WAS BENT OVER DURING THE CONSTRUCTION OF HIGHWAY 13. FITS EDM. TRAVERSE GOOD IN ALL DIRECTIONS.

- 1 new 4-25-84 DK-SS
- 2 NEW TIES 2-10-89
- OK 2-11-94 CR-SS
- OK 12-29-98-JG



CERTIFIED CORRECT:
Frederic W. Zietlow
 Registered Land Surveyor
 DATE: 5-9-75

TIE SKETCH

(Show at least four ties)

