

## PUBLIC LAND SURVEY MONUMENT RECORD

TYPE OF MONUMENT: HARRISON  
 ADAMS COUNTY COORDINATES, NAD 83 (2007)

N. 303448.041

E. 535900.783

ELEVATION-          DATUM         

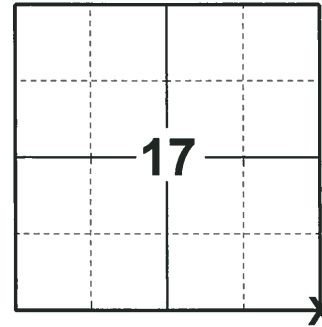
FIELD WORK DATE: 05/09/2018

### BASIS FOR MONUMENT LOCATION

1975 - PLS 922 CALCULATED THE CORNER LOCATION FROM PREVIOUS TIES FROM THE LAKE SHERWOOD PLAT. REMOVED EXISTING 5/8" x 14" SQUARE IRON BAR AND SET HARRISON THE SAME AND TIED OUT.

1981 - PLS 878 PREVIOUS HARRISON MONUMENT AND ALL TIES WERE DESTROYED BY ROAD CONSTRUCTION. RE-SET CORNER BY RE-TRACING THE SOUTH LINE OF SECTION 17 PER SECTION SUMMARY AND RE-TIED CORNER.

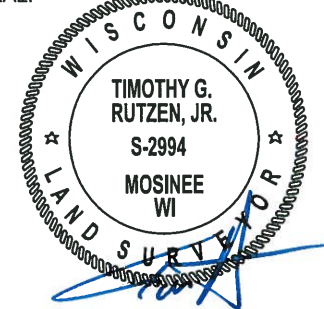
2018 - PLS 2994 FOUND A HARRISON MONUMENT 4" BELOW THE ROAD SURFACE AND 2 PROPERTY IRONS. FOUND NO EVIDENCE OF ANY OF THE EXISTING WITNESSES. ACCEPTED THE HARRISON MONUMENT AS THE BEST EVIDENCE OF THE CORNER LOCATION. SET 2 NEW TIES AND MEASURED TO THE TIES AND PROPERTY IRONS.



**LOCATION**

(INDICATE CORNER BY "X")

SEAL:



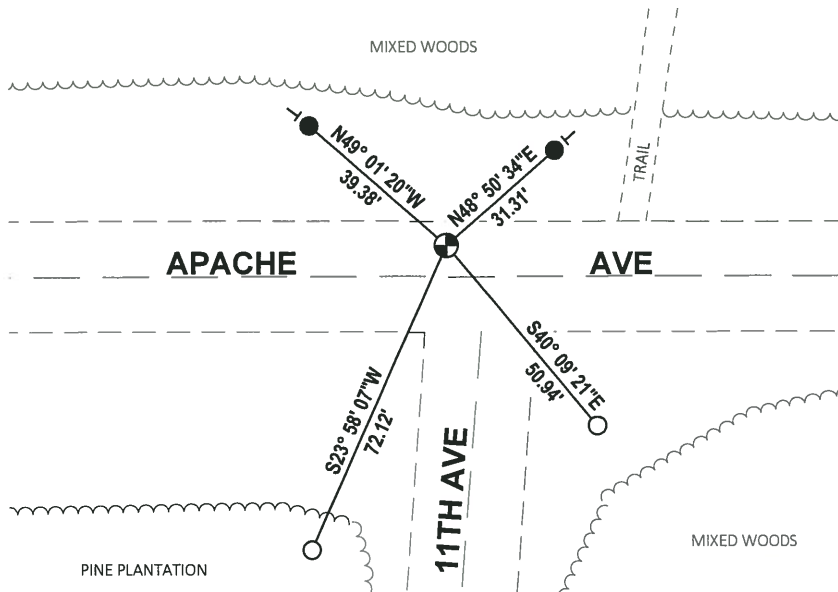
DATA SHOWN HERE ON THIS TIE SHEET IS CORRECT AND COMPLETE TO THE BEST OF MY KNOWLEDGE AND BELIEF.

PROFESSIONAL LAND SURVEYOR

DATE 7-18-18

### TIE SKETCH

NOTE: THE CORNER FALLS 7± NORTH OF THE CENTERLINE OF APACHE AVE AND 9± WEST OF THE CENTERLINE OF 11TH AVE.



- SET 3/4" x 18" IRON REBAR, 1.50#/FT
- FOUND 3/4" IRON ROD
- ⊙ FOUND HARRISON MONUMENT
- VINYL "T" POST

no change

# Government Land Corner Certificate

ADAMS County

CORNER NO.	65	RESET
SECTION	21	
TOWN	20	
RANGE	6	

TYPE OF MONUMENT: HARRISON

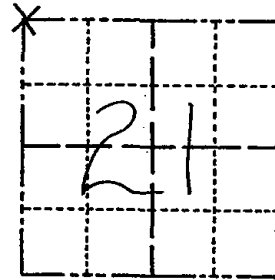
STATE PLANE COORDINATES: N \_\_\_\_\_  
E \_\_\_\_\_

ELEVATION — M.S.L. DATUM: \_\_\_\_\_

THETA ANGLE: \_\_\_\_\_

FIELD BOOK: 69 PAGE 131

DRAWN BY: L. COOMBS



LOCATION  
(Indicated by 'X')

## BASIS FOR MONUMENT LOCATION

Show info such as: History of corner, with reference to Vol. and pg., dates, surveyor; exact description of monument replaced; if location computed, by taped or EDM traverse; landowner remarks, etc. (Use reverse side if necessary)

Previous Harrison monument and all ties were destroyed by road construction. Corner reset by rerunning the south line of section 17 per section summary. (7/15/81)

Ok 4-19-84 DJK

3-01-94 GR-35

OK 12-29-98 - JG

1-GONE, 1-NEW, 3-17-04-56

3 TIES REMAIN: 2-10-09

SEAL:



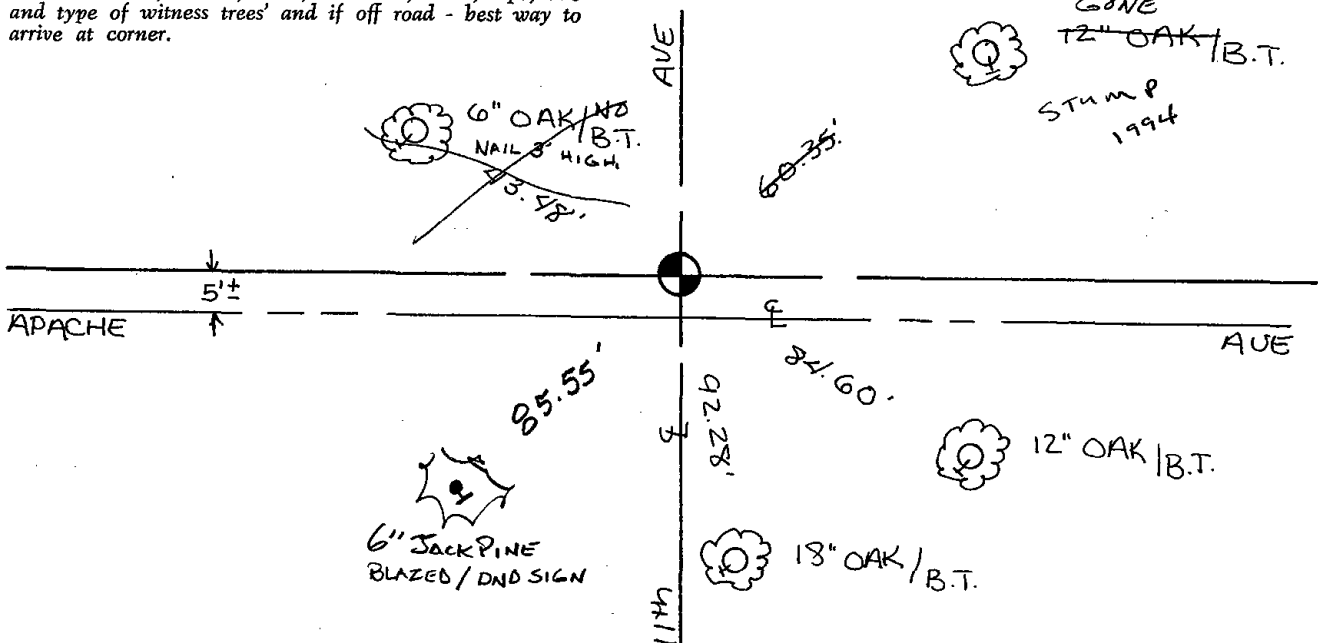
DATA SHOWN HERE ON  
CERTIFIED CORRECT:

*Anthony B. Kiedrowski*  
Registered Land Surveyor

DATE: 8/4/81

## TIE SKETCH

Show at least four ties, also fence lines, roads, topo, size and type of witness trees and if off road - best way to arrive at corner.





ADAMS COUNTY

Survey Monument Record

TYPE OF MONUMENT: 30" HARRISON

STATE PLANE COORDINATES: N \_\_\_\_\_

E \_\_\_\_\_

ELEVATION — M.S.L. DATUM: \_\_\_\_\_

THETA ANGLE: \_\_\_\_\_

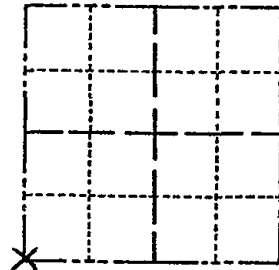
FIELD BOOK: \_\_\_\_\_ PAGE \_\_\_\_\_

CORNER NO. 748<sup>65</sup>

SECTION 16

TOWN 20N

RANGE 6E



LOCATION  
(Indicated by 'X')

SEAL:

BASIS FOR MONUMENT LOCATION

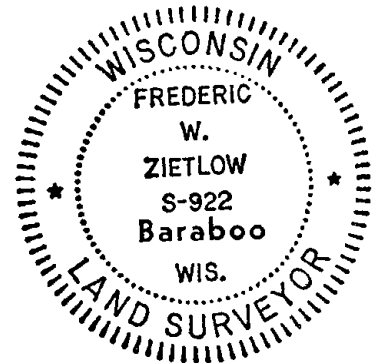
(Use reverse side if necessary)

Show info such as: History of corner, with reference to Vol. and pg, dates, surveyor; exact description of monument replaced; if location computed, by taped or EDM traverse; landowner remarks, etc.

SET CORNER FROM PREVIOUS TIES FROM LAKE SHERWOOD FLAT. REMOVED EXISTING 5/8" X 14" SQUARE IRON BAR.

1

Reset on 8/4/81 see New tie sheet



CERTIFIED CORRECT:

*Frederic W. Zietlow*

Registered Land Surveyor

DATE: 5-9-75

TIE SKETCH

(Show at least four ties)

