

PUBLIC LAND SURVEY MONUMENT RECORD

TYPE OF MONUMENT: SURVEY NAIL
 ADAMS COUNTY COORDINATES, NAD 83 (2007)

N. 303513.031

E. 541219.825

ELEVATION- DATUM

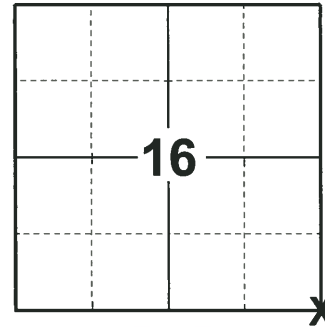
FIELD WORK DATE: 05/08/2018

BASIS FOR MONUMENT LOCATION

1975 - PLS 922 FOUND A 2"x36" 18" IRON PIPE UNDER THE SURFACE, WITH A POINTED HARD HEAD STONE OVER THE TOP OF IT. ALL OF LAKE SHERWOOD & LAKE CAMELOT PLATS ARE TIED TO THIS CORNER. SET HARRISON AT CORNER AND TIED OUT.

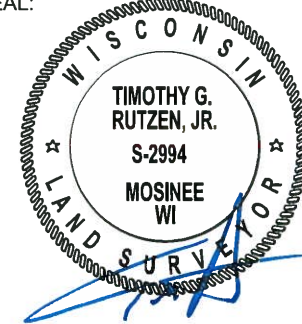
2004 - PLS (UNKNOWN) SUSPECT THAT THE CORNER WAS DESTROYED BY ROAD CONSTRUCTION. CALCULATED BY ANGLE AND DISTANCE FROM THE EAST AND VERIFIED LOCATION FROM WEST PER SECTION SUMMARIES. SET MAG NAIL & 3 NEW TIES.

2018 - PLS 2994 FOUND A MAG NAIL IN THE ROAD SURFACE, 1 PROPERTY IRON AND 1 WITNESS. REMOVED THE MAG NAIL AND FOUND NO ADDITIONAL MONUMENTATION BELOW THE MAG NAIL LOCATION. THE MAG NAIL AGREES WITH THE EXISTING WITNESS. ACCEPTED THE MAG NAIL AS THE CORNER AND REPLACED IT WITH A SURVEY NAIL. SET 4 NEW TIES AND MEASURED TO THE TIES, PROPERTY IRON AND WITNESS.



LOCATION
 (INDICATE CORNER BY "X")

SEAL:



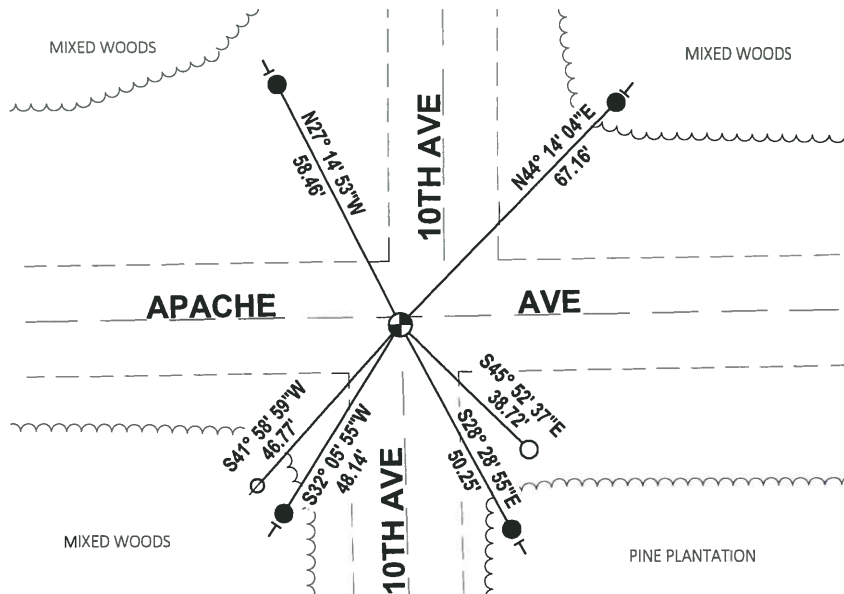
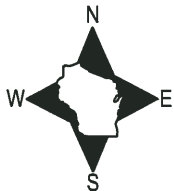
DATA SHOWN HERE ON THIS TIE SHEET IS CORRECT AND COMPLETE TO THE BEST OF MY KNOWLEDGE AND BELIEF.

PROFESSIONAL LAND SURVEYOR

DATE 7-18-18

- TIE SKETCH -

NOTE: THE CORNER FALLS 2'± SOUTH OF THE CENTERLINE OF APACHE AVE AND 1'± WEST OF THE CENTERLINE OF 10TH AVE SOUTH.



- SET 3/4" x 18" IRON REBAR, 1.50#/FT
- FOUND 3/4" IRON ROD
- ⊙ SET SURVEY NAIL
- ⊘ WITNESS POWER POLE
- VINYL "T" POST

ADAMS COUNTY

Survey Monument Record

CORNER NO. 749

SECTION 16

TOWN 20 N

RANGE 6 E

TYPE OF MONUMENT: 30" HARRISON

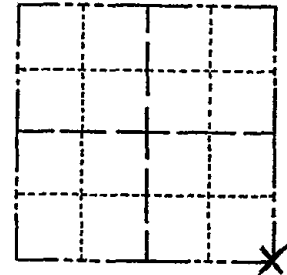
STATE PLANE COORDINATES: N _____

E _____

ELEVATION — M.S.L. DATUM: _____

THETA ANGLE: _____

FIELD BOOK: _____ PAGE _____



BASIS FOR MONUMENT LOCATION

(Use reverse side if necessary)

Show info such as: History of corner, with reference to Vol. and pg, dates, surveyor; exact description of monument replaced; if location computed, by taped or EDM traverse; landowner remarks, etc.

SEAL:

LOCATION
(Indicated by 'X')

FOUND 2"X36" IRON DOWN 18"
WITH POINTED HARDHEAD STONE
OVER THE TOP OF IT. ALL OF
LAKE SHERWOOD & LAKE CAMELOT
PLATS ARE TIED TO THIS CORNER

8-17-04 FO. 1 GOOD TIE - NO MON.
SUSPECT DESTROYED
BY CONSTRUCTION
MARK BY ANGLE
AND DIST FROM
EAST, VERIFIED
FROM WEST PER
ABR SUMMARIES &
SET MAG NAIL &
3 NEW TIES



OK 4-19-84 DJK
OK 3-8-89 GR-SS

JG-SS
OK 2-10-09 SS

RECORDED 22979 PR-SS

OK 3-11-95 GR-SS
OK 3-9-99 JG-SS

CERTIFIED CORRECT:

Frederic W. Zietlow
Registered Land Surveyor

DATE: 5-9-75

TIE SKETCH

(Show at least four ties)

LOT 26
LONG BOW ADDITION
TO LAKE SHERWOOD

