

PUBLIC LAND SURVEY MONUMENT RECORD

TYPE OF MONUMENT: HARRISON (BROKEN-TOP)
ADAMS COUNTY COORDINATES, NAD 83 (2007)

N. 303605.872

E. 549130.381

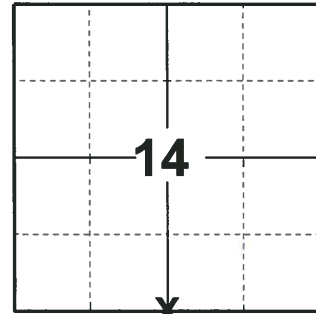
ELEVATION- DATUM

FIELD WORK DATE: 05/08/2018

BASIS FOR MONUMENT LOCATION

1981 - PLS 878 RETRACED LAKE CAMELOT PLATS TIED TO THIS CORNER. FOUND A 1-1/2" x 30" IRON PIPE WITH CROSS RODS IN THE BOTTOM. REPLACED THE PIPE WITH A HARRISON MONUMENT AND TIED OUT.

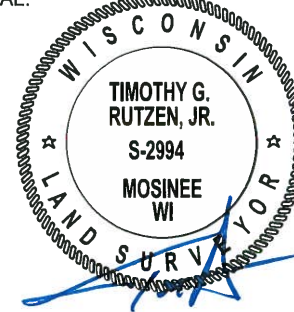
2018 - PLS 2994 FOUND A HARRISON MONUMENT WITH A BROKEN-TOP 12" BELOW THE ROAD SURFACE. FOUND NO EVIDENCE OF ANY OF THE WITNESSES. ACCEPTED THE HARRISON MONUMENT WITH A BROKEN-TOP AS THE BEST EVIDENCE OF THE CORNER LOCATION. SET 4 NEW TIES AND MEASURED TO THE TIES.



LOCATION

(INDICATE CORNER BY "X")

SEAL:

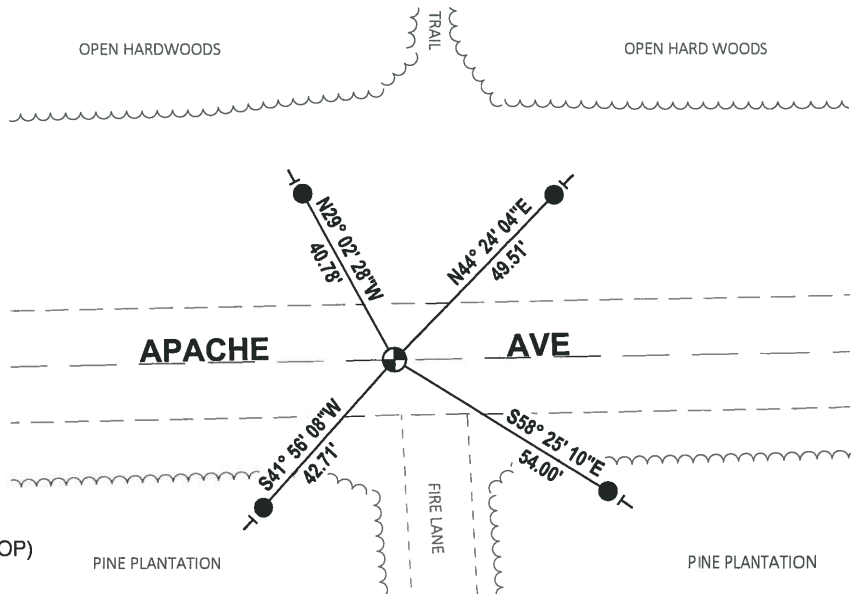


DATA SHOWN HERE ON THIS TIE SHEET IS CORRECT AND COMPLETE TO THE BEST OF MY KNOWLEDGE AND BELIEF.

PROFESSIONAL LAND SURVEYOR

DATE 7-18-18

TIE SKETCH



- SET 3/4" x 18" IRON REBAR, 1.50#/FT
- ⊙ FOUND HARRISON MONUMENT (BROKEN-TOP)
- T VINYL "T" POST

REPLACED 1 1/2" IP & ALICE FOUND AT CORNER

Government Land Corner Certificate

ADAMS County

TYPE OF MONUMENT: HARRISON

STATE PLANE COORDINATES: N _____
E _____

ELEVATION — M.S.L. DATUM: _____

THETA ANGLE: _____

FIELD BOOK: 88 PAGE 20

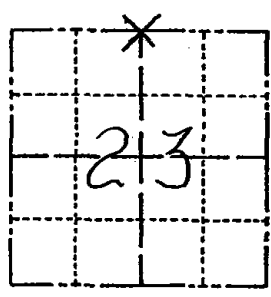
DRAWN BY: NT

CORNER NO. 70

SECTION 23

TOWN 20

RANGE 6



LOCATION
(Indicated by 'X')

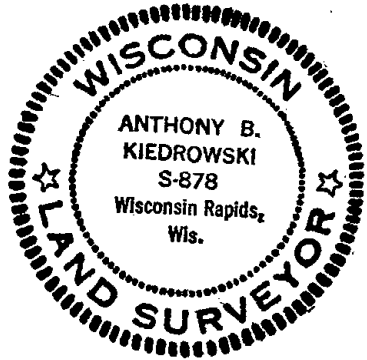
BASIS FOR MONUMENT LOCATION

Show info such as: History of corner, with reference to Vol. and pg., dates, surveyor; exact description of monument replaced; if location computed, by taped or EDM traverse; landowner remarks, etc. (Use reverse side if necessary)

Retraced pertinent Lake Camelot plats to this point, found 1 1/2" x 30" iron pipe with cross rods in the bottom. Replaced pipe found with Harrison monument.

Ok 4-19-84 DJK

SEAL:



DATA SHOWN HERE ON
CERTIFIED CORRECT:

Anthony B. Kiedrowski
Registered Land Surveyor

DATE: 8/4/81

TIE SKETCH

Show at least four ties, also fence lines, roads, topo, size and type of witness trees and if off road, best way to arrive at corner.

