

PUBLIC LAND SURVEY MONUMENT RECORD

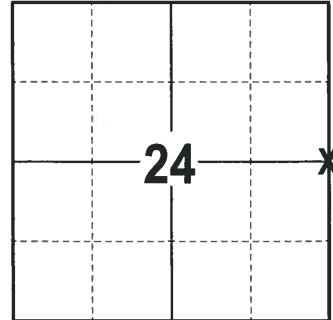
TYPE OF MONUMENT: HARRISON (BROKEN-TOP)
 ADAMS COUNTY COORDINATES, NAD 83 (2007)

N. 300738.794

E. 525533.720

ELEVATION- DATUM

FIELD WORK DATE: 02/14/2018



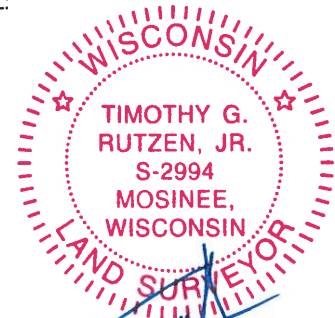
LOCATION
 (INDICATE CORNER BY "X")

BASIS FOR MONUMENT LOCATION

1975 - PLS 1103 RAN EDM/TRANSIT TRAVERSE AROUND SECTION 19 TO DETERMINE THE SEARCH AREAS FOR CORNERS. EXCAVATION BY HAND YIELDED A 1-1/2" BY 30" IRON PIPE WITH RODS THROUGH THE BOTTOM PERPENDICULAR TO THE LENGTH OF THE PIPE. COULDN'T FIND ANY RECORD OF THE PIPE OR ANY OTHER EVIDENCE AS TO THE LOCATION OF THE ORIGINAL CORNER OR ANY REMONUMENTATION. REMONUMENTED THE CORNER WITH A STANDARD HARRISON AND TIED OUT.

2018 - PLS 2994 FOUND A HARRISON MONUMENT WITH A BROKEN-TOP 12" BELOW THE GROUND SURFACE AND 3 TIES. THE MONUMENT AGREES WITH THE EXISTING TIES. ACCEPTED THE HARRISON MONUMENT WITH A BROKEN-TOP AS THE CORNER LOCATION. SET 1 NEW TIE AND MEASURED TO THE TIES.

SEAL:



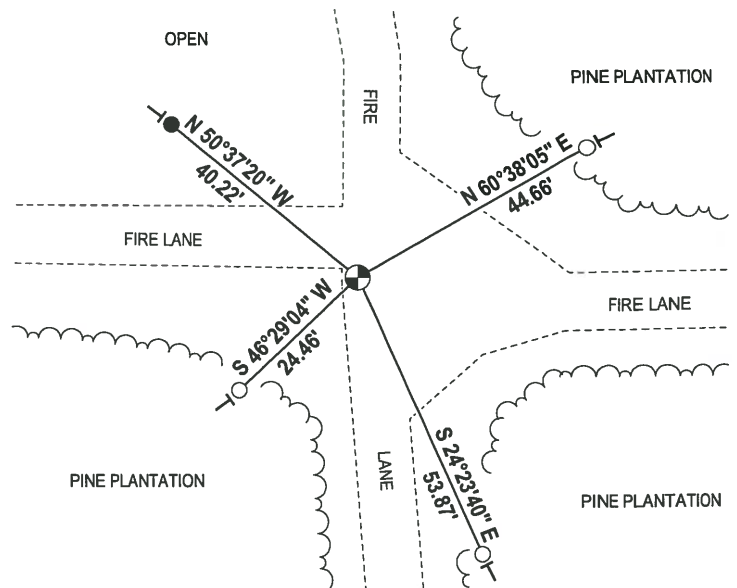
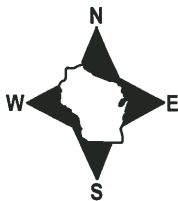
DATA SHOWN HERE ON THIS TIE SHEET IS CORRECT AND COMPLETE TO THE BEST OF MY KNOWLEDGE AND BELIEF.

PROFESSIONAL LAND SURVEYOR

DATE 3-1-18

- TIE SKETCH -

NOTE: THE CORNER FALLS 3± WEST OF THE CENTERLINE OF THE FIRE LANE.



- 3/4" x 18" IRON REBAR SET, 1.50#/FT
- 3/4" IRON ROD FOUND
- ⊙ HARRISON (BROKEN-TOP) FOUND
- VINYL "T" POST

ADAMS COUNTY

Survey Monument Record

TYPE OF MONUMENT: Standard Harrison

STATE PLANE COORDINATES: N _____
E _____

ELEVATION — M.S.L. DATUM: _____

THETA ANGLE: _____

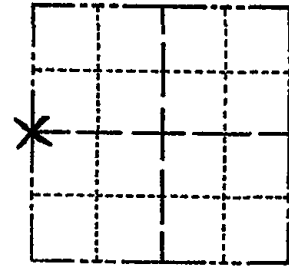
FIELD BOOK: _____ PAGE _____

CORNER NO. 702 74

SECTION 19

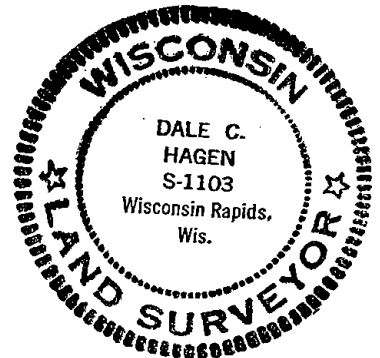
TOWN 20

RANGE 6



LOCATION
(Indicated by 'X')

SEAL:



BASIS FOR MONUMENT LOCATION

(Use reverse side if necessary)

Show info such as: History of corner, with reference to Vol. and pg, dates, surveyor; exact description of monument replaced; if location computed, by taped or EDM traverse; landowner remarks, etc.

Ran EDM/transit traverse around Section 19 to determine search areas for the corners.

Excavation by hand yielded 1-1/2" by 30" Iron Pipe with rod through bottom perpendicular to the length of the pipe.

Could find no record of the pipe or any other evidence as to the location of the original corner or any remonumentation.

Remonumented corner with Standard Harrison Monument.

OK 3 MARCH 94 CR-JG
RETIED 6-7-79 RN-RW
1 new 5-7-84 DK-SS
3 NEW TIES 6-12-89 MK-SS

CERTIFIED CORRECT:

Dale C. Hagen
Registered Land Surveyor
DATE: 2/1/75

TIE SKETCH OK-12-29-98-JG TOP BROKEN OFF MONUMENT, BOTTOM GOOD
OK-3-17-04-JG
(Show at least four ties)
1 NEW TIE 2-19-09 SS

