

PUBLIC LAND SURVEY MONUMENT RECORD

TYPE OF MONUMENT: HARRISON
 ADAMS COUNTY COORDINATES, NAD 83 (2007)

N. 300783.506

E. 530624.240

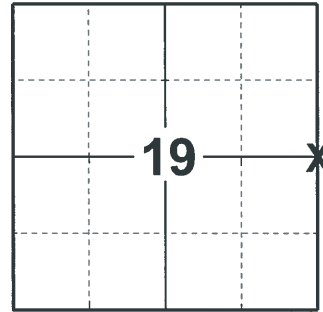
ELEVATION- - - - - DATUM - - - - -

FIELD WORK DATE: 05/10/2018

BASIS FOR MONUMENT LOCATION

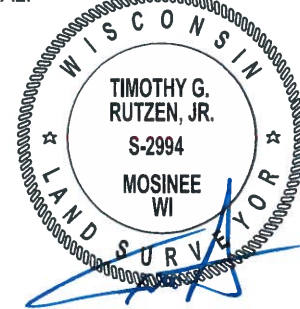
1974 - PLS 878 ANTHONY B. KIEDROWSKI EXCAVATED AT CORNER WITH A BACK-HOE AND FOUND A 30 INCH SWORD BLADE. AN EXTENSIVE TRAVERSE DETERMINED THE EXCAVATION SITE AND VERIFIED THE LOCATION OF THE SWORD FOUND. THE SWORD FOUND WAS A 1-1/4" WIDE AT THE TOP AND 1/2" WIDE AT THE BOTTOM. IT WAS 1/4" THICK AT THE TOP AND 1/8" THICK AT THE BOTTOM. LENGTH WAS 29". REPLACED THE SWORD WITH A HARRISON AND TIED OUT. THE SWORD WAS SAVED FOR FUTURE DISPLAY.

2018 - PLS 2994 FOUND A HARRISON MONUMENT 12" BELOW THE GROUND SURFACE AND 1 TIE. THE MONUMENT AGREES WITH THE EXISTING TIE. ACCEPTED THE HARRISON MONUMENT AS THE CORNER LOCATION. SET 3 NEW TIES AND MEASURED TO THE TIES.



LOCATION
 (INDICATE CORNER BY "X")

SEAL:



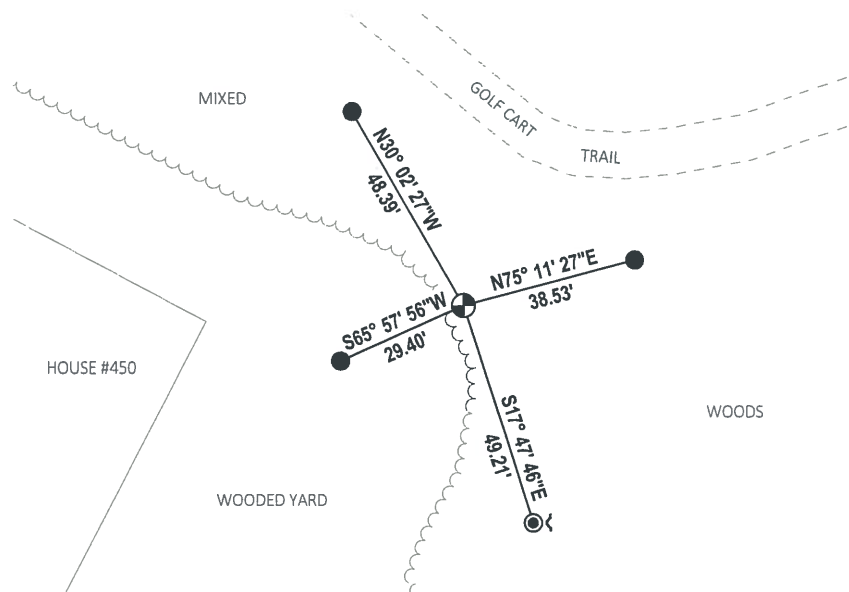
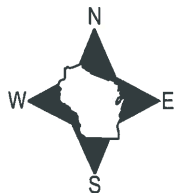
DATA SHOWN HERE ON THIS TIE SHEET IS CORRECT AND COMPLETE TO THE BEST OF MY KNOWLEDGE AND BELIEF.

PROFESSIONAL LAND SURVEYOR

DATE 7-18-18

- TIE SKETCH -

NOTE: THE CORNER FALLS 96± SOUTHWEST OF THE CENTERLINE OF THE GOLF CART TRAIL.



- SET 3/4" x 18" IRON REBAR, 1.50#/FT
- ⊙ FOUND 1-1/4" IRON ROD
- ⊕ FOUND HARRISON MONUMENT
- ~ STEEL FENCE POST

ADAMS COUNTY

Survey Monument Record

TYPE OF MONUMENT: HARRISON MONUMENT

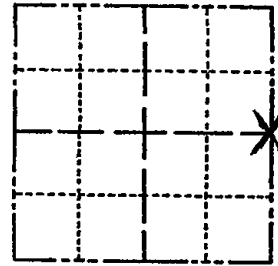
STATE PLANE COORDINATES: N _____
E _____

ELEVATION — M.S.L. DATUM: _____

THETA ANGLE: _____

FIELD BOOK: _____ PAGE _____

CORNER NO. 804⁷⁵
SECTION 19
TOWN 20
RANGE 6



LOCATION
(Indicated by 'X')

SEAL:



BASIS FOR MONUMENT LOCATION

(Use reverse side if necessary)

Show info such as: History of corner, with reference to Vol. and pg, dates, surveyor; exact description of monument replaced; if location computed, by taped or EDM traverse; landowner remarks, etc.

Anthony B. Kiedrowski excavated with the backhoe and found 30 inch "sword blade". An extensive EDM traverse determined excavation site, and verified location of "sword" found.

"Sword" found was 1 1/4" wide at the top and 1/2" wide at the bottom, 1/4" thick at the top, 1/8" thick at the bottom. Length was 29". Replaced with Harrison. "Sword saved for future display.

All Ok 7-27-84 SS-DK
3 NEW TIES 6-12-89 MK-SS
OK 3-7-94 JG-GR
OK 12-29-98 -JG

CERTIFIED CORRECT:

Anthony B. Kiedrowski
Registered Land Surveyor

DATE: Oct. 74

TIE SKETCH OK, 3-17-04-JG
2-2-09 1 NEW TIE
(Show at least four ties)

Ties to nail in scribed trees.

PROBABLY SAME TREE NOTED AS JACK PINE IN ERROR.

