

## PUBLIC LAND SURVEY MONUMENT RECORD

TYPE OF MONUMENT: HARRISON  
 ADAMS COUNTY COORDINATES, NAD 83 (2007)

N. 300941.488

E. 546496.383

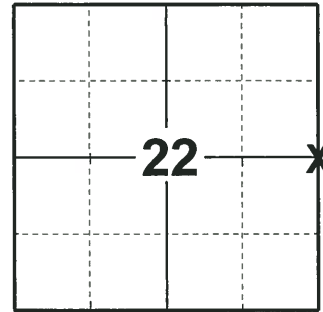
ELEVATION-          DATUM         

FIELD WORK DATE: 5/22/2018

### BASIS FOR MONUMENT LOCATION

1981 - NO RESURVEYS ON RECORD. COULD FIND NO EVIDENCE OF ANY PREVIOUS MONUMENTATION. CORNER WAS CALCULATED ON A STRAIGHT LINE EQUIDISTANT BETWEEN SECTION CORNERS. SET A HARRISON AND TIED OUT.

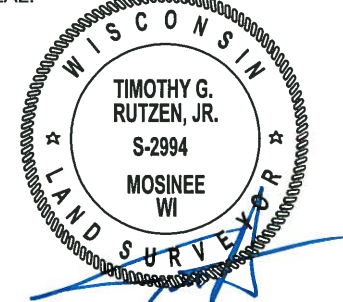
2018 - FOUND A HARRISON MONUMENT FLUSH WITH THE GROUND SURFACE AND 4 WITNESS TREES. THE MONUMENT AGREES WITH THE EXISTING WITNESS TREES. ACCEPTED THE HARRISON MONUMENT AS THE CORNER LOCATION. SET 4 NEW TIES AND MEASURED TO THE TIES AND WITNESS TREES.



LOCATION

(INDICATE CORNER BY "X")

SEAL:



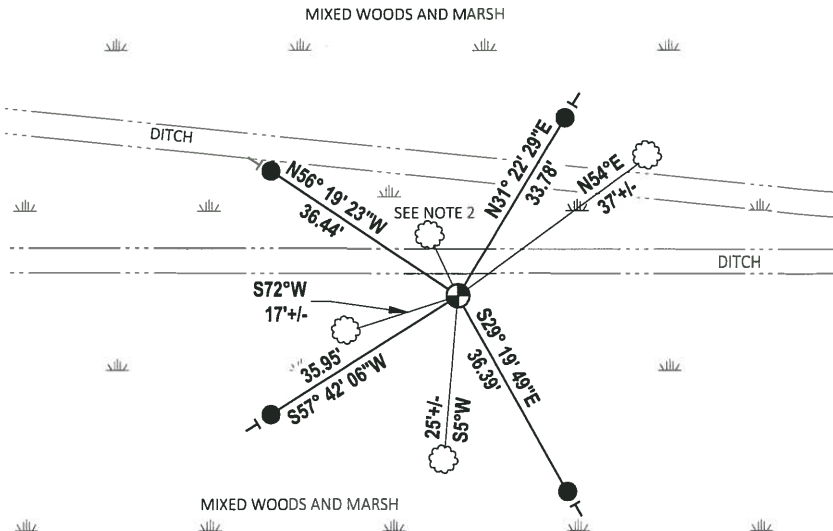
DATA SHOWN HERE ON THIS TIE SHEET IS CORRECT AND COMPLETE TO THE BEST OF MY KNOWLEDGE AND BELIEF.

PROFESSIONAL LAND SURVEYOR

DATE 7-18-18

### TIE SKETCH

NOTE 1: THE CORNER FALLS 4± SOUTH OF THE SOUTH DITCH.  
 NOTE 2: THE WITNESS TREE FALLS N25°W, 9± OF THE CORNER LOCATION.

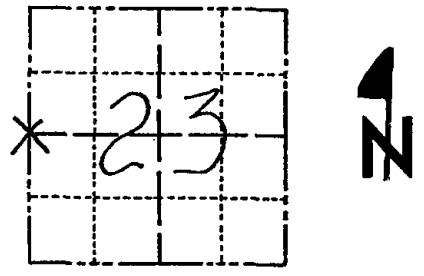


- SET 3/4" x 18" IRON REBAR, 1.50#/FT
- ⊕ FOUND HARRISON MONUMENT
- ┌ VINYL "T" POST
- ☼ WITNESS TREE

# Government Land Corner Certificate

ADAMS County  
 TYPE OF MONUMENT: HARRISON  
 STATE PLANE COORDINATES: N \_\_\_\_\_  
 E \_\_\_\_\_  
 ELEVATION — M.S.L. DATUM: \_\_\_\_\_  
 THETA ANGLE: \_\_\_\_\_  
 FIELD BOOK: 69 PAGE 138  
 DRAWN BY: NJ

CORNER NO. 78  
 SECTION 23  
 TOWN 20  
 RANGE 6



LOCATION  
(Indicated by 'X')

## BASIS FOR MONUMENT LOCATION

Show info such as: History of corner, with reference to Vol. and pg., dates, surveyor; exact description of monument replaced; if location computed, by taped or EDM traverse; landowner remarks, etc. (Use reverse side if necessary)

No resurveys on record. Could find no evidence of any previous monumentation. Corner is set on a straight line equidistant between section corners.

SEAL:



DATA SHOWN HERE ON  
CERTIFIED CORRECT:

*Anthony B. Kiedrowski*  
Registered Land Surveyor

DATE: 8/4/81

## TIE SKETCH

Show at least four ties, also fence lines, roads, topo, size and type of witness trees and if off road - best way to arrive at corner.

