

23
SECTION

20
TOWN

06
RANGE

ADAMS COUNTY

COUNTY CORNER NO.: 79

ROMPORTOL ID: 42006232000

PUBLIC LAND SURVEY MONUMENT RECORD

TYPE OF MONUMENT: HARRISON (BROKEN-TOP)
ADAMS COUNTY COORDINATES, NAD 83 (2007)

N. 300969.272

E. 551784.802

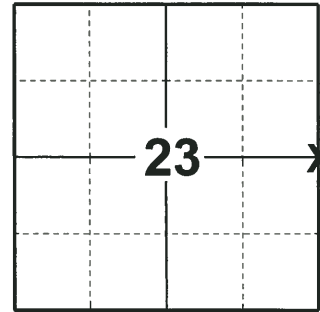
ELEVATION- - - - - DATUM - - - - -

FIELD WORK DATE: 05/22/2018

BASIS FOR MONUMENT LOCATION

1977 - 878 RAN EDM/T2 TRAVERSE AROUND SECTION 25 AND PORTIONS OF SECTION 24 TO DETERMINE SEARCH AREA FOR INVESTIGATION. ANTHONY B. KIEDROWSKI, ADAMS COUNTY SURVEYOR, EXCAVATED AT CORNER WITH A BACKHOE AND FOUND THE BOTTOM 15" OF A 4" DIAMETER WOOD POST SET BY THE ORIGINAL GOVERNMENT SURVEYOR. REMONUMENTED WITH HARRISON ON 11-9-1977 AND TIED OUT.

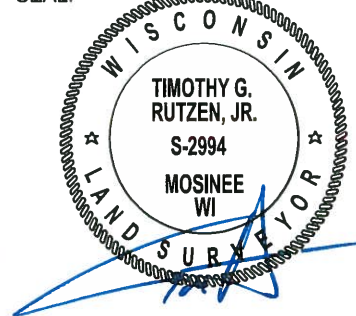
2018 - 2994 FOUND A HARRISON MONUMENT WITH A BROKEN-TOP 6" BELOW THE ROAD SURFACE AND 1 TIE. THE MONUMENT AGREES WITH THE EXISTING TIE. ACCEPT THE HARRISON MONUMENT WITH A BROKEN-TOP AS THE CORNER LOCATION. SET 3 NEW TIES AND MEASURED TO THE TIES.



LOCATION

(INDICATE CORNER BY "X")

SEAL:



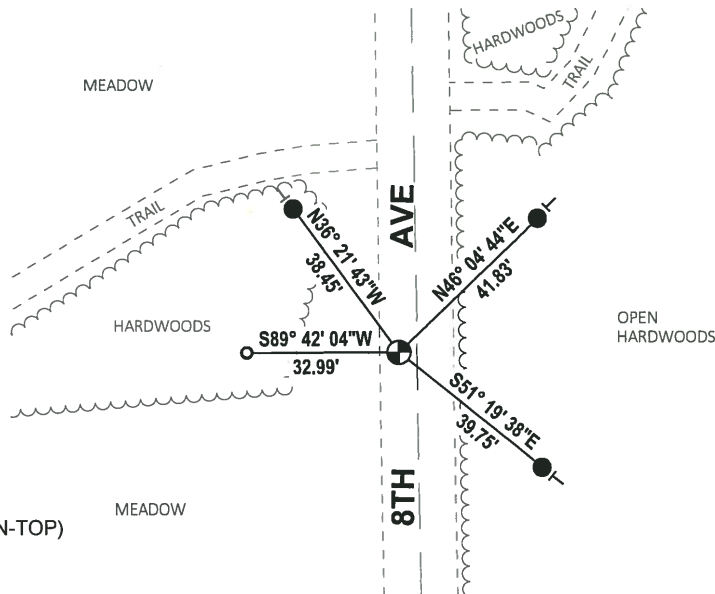
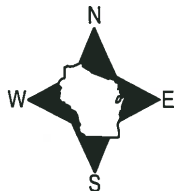
DATA SHOWN HERE ON THIS TIE SHEET IS CORRECT AND COMPLETE TO THE BEST OF MY KNOWLEDGE AND BELIEF.

PROFESSIONAL LAND SURVEYOR

DATE 7-18-18

TIE SKETCH

NOTE: THE CORNER FALLS 4' WEST OF CENTERLINE OF 8TH AVE.

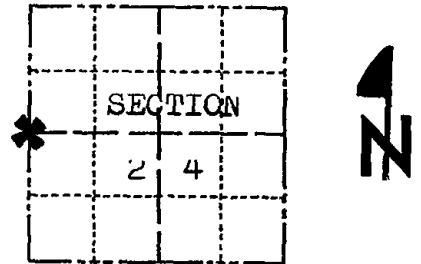


- SET 3/4" x 18" IRON REBAR, 1.50#/FT
- FOUND 1-1/4" O.D. IRON PIPE
- ⊕ FOUND HARRISON MONUMENT (BROKEN-TOP)
- VINYL "T" POST

Government Land Corner Certificate

ADAMS County
 TYPE OF MONUMENT: HARRISON STD.
 STATE PLANE COORDINATES: N _____
 E _____
 ELEVATION — M.S.L. DATUM: _____
 THETA ANGLE: — (101) _____ (120) _____
 FIELD BOOK: 57 PAGE 40
 DRAWN BY: SCOTT SORENSEN

CORNER NO. 79
 SECTION 24
 TOWN 20
 RANGE 6



LOCATION
(Indicated by 'X')

BASIS FOR MONUMENT LOCATION

Show info such as: History of corner, with reference to Vol. and pg., dates, surveyor; exact description of monument replaced; if location computed, by taped or EDM traverse; landowner remarks, etc. (Use reverse side if necessary)

Ran EDM/T2 traverse around Section 25 and portions of Section 24 to determine search area for investigation.

Anthony B. Kiedrowski, Adams County Surveyor, excavated with backhoe and found bottom 15" of 4" diameter wood post set by original Government Surveyor.

Remonumented with Harrison on 11-9-1977.

Ok 4-27-84 SS-DK

SEAL:



DATA SHOWN HERE ON
CERTIFIED CORRECT:

Anthony B. Kiedrowski
Registered Land Surveyor

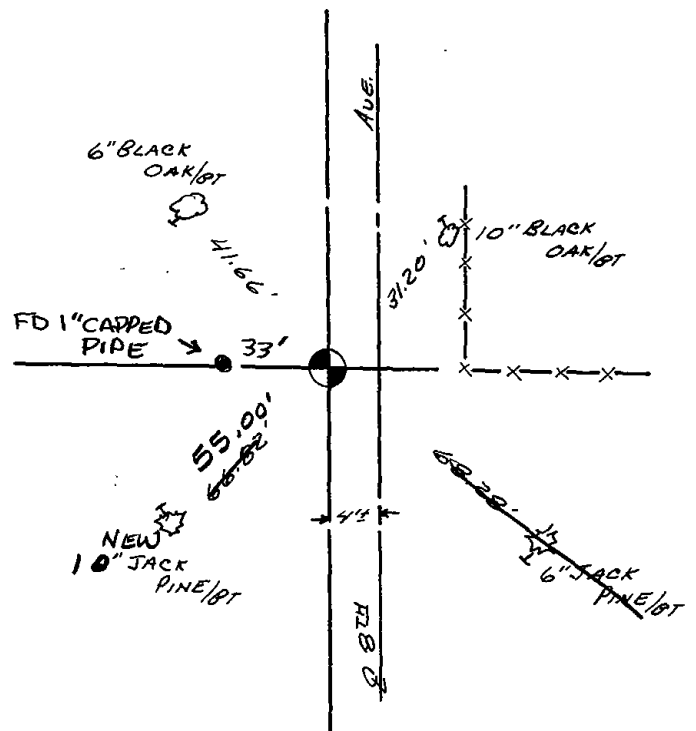
DATE: December 27, 1977

TIE SKETCH

Show at least four ties, also fence lines, roads, topo, size and type of witness trees' and if off road - best way to arrive at corner.

NOTE

Ties in trees to nail in disc.



MAINTENANCE RECORD

Date	Init.	Remarks
4-12-79	JK-SS	OK
3-01-94	GR-SS	6K
2-16-99	JG-SS	1-GONE, 1-NEW TIE
2-24-04	JG	1-NEW
12-19-09	SS	4 TIES OK