

24
SECTION

20
TOWN

05
RANGE

ADAMS COUNTY

COUNTY CORNER NO: 93

ROMPORTOL ID: 42005240000

PUBLIC LAND SURVEY MONUMENT RECORD

TYPE OF MONUMENT: COTTON GIN SPINDLE
ADAMS COUNTY COORDINATES, NAD 83 (2007)

N. 298089.202

E. 525555.757

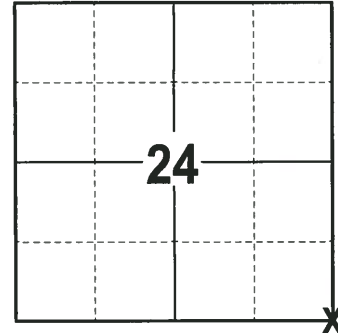
ELEVATION- _____ DATUM _____

FIELD WORK DATE: 02/13/2018

BASIS FOR MONUMENT LOCATION

2015 - PLS 2452 FOUND A HARRISON MONUMENT WITH THE TOP BROKEN OFF 1± BELOW THE GRADE OF A SAND/DIRT ROAD PER TIE SHEET BY DALE C. HAGEN, DATED, 2-1-75. FOUND THE 3/4" ROD NORTHEASTERLY OF THE HARRISON MONUMENT AND ALSO A 3/4" ROD SOUTHEASTERLY OF SAID MONUMENT. ACCEPTED THE HARRISON MONUMENT AS THE CORNER, TIED INTO THE 3/4" RODS AND PLACED 2 ADDITIONAL TIES. DATE OF FIELD SURVEY & MONUMENT RECOVERY WAS SEPTEMBER 02, 2015.

2018 - PLS 2994 FOUND A COTTON GIN SPINDLE IN THE ROAD SURFACE AND 4 TIES. REMOVED THE COTTON GIN SPINDLE AND FOUND NO OTHER MONUMENTATION AS DESCRIBED IN PRIOR TIESHEETS BELOW IT. THE COTTON GIN SPINDLE AGREES WITH 3 OF THE EXISTING TIES AND THE DISTANCE TO THE E1/4 OF SECTION 25 AS SHOWN ON PRIOR TIESHEET. ACCEPTED THE COTTON GIN SPINDLE AS THE CORNER LOCATION AND RE-SET IT IN THE LOCATION IT WAS FOUND AND RE-MEASURED TO THE EXISTING TIES.



LOCATION
(INDICATE CORNER BY "X")

SEAL:



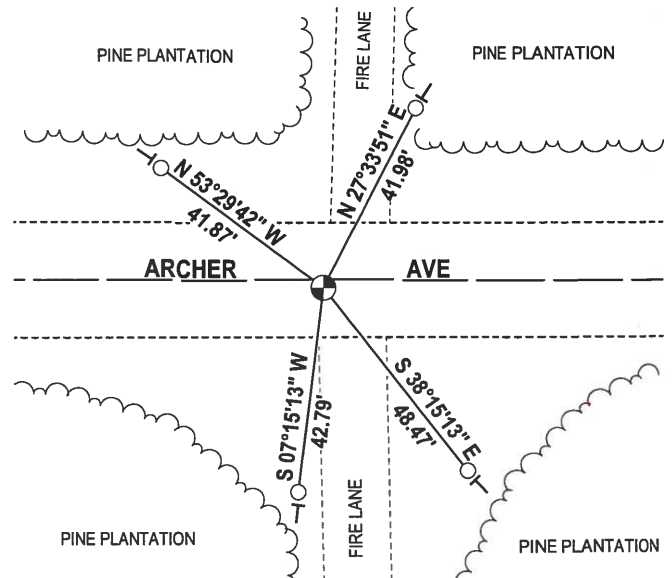
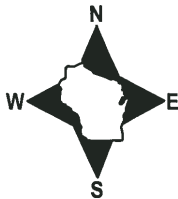
DATA SHOWN HERE ON THIS TIE SHEET IS CORRECT AND COMPLETE TO THE BEST OF MY KNOWLEDGE AND BELIEF.

PROFESSIONAL LAND SURVEYOR

DATE 3-1-18

- TIE SKETCH

NOTE: THE CORNER FALLS 2± SOUTH OF THE CENTERLINE OF ARCHER AVE.



- 3/4" IRON ROD FOUND
- ⊕ COTTON GIN SPINDLE FOUND
- VINYL "T" POST