

## PUBLIC LAND SURVEY MONUMENT RECORD

TYPE OF MONUMENT: COTTON GIN SPINDLE  
 ADAMS COUNTY COORDINATES, NAD 83 (2007)

N. 298113.813

E. 527978.625

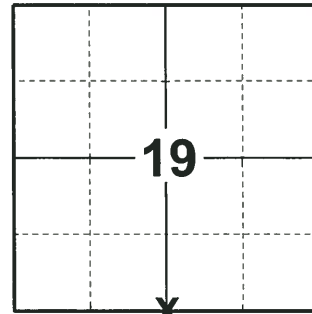
ELEVATION-      DATUM     

FIELD WORK DATE: 05/10/2018

### BASIS FOR MONUMENT LOCATION

1975 - PLS 1103 RAN E.D.M./TRANSIT TRAVERSE AROUND SECTION 19 TO DETERMINE SEARCH AREAS FOR CORNERS. EXCAVATION AT CORNER BY HAND YIELDED A 1-1/2" BY 30" IRON PIPE WITH A ROD RUN THROUGH THE BOTTOM PERPENDICULAR TO THE LENGTH OF THE PIPE. FOUND NO RECORD OF THE PIPE. ACCEPTED THE PIPE AS THE CORNER AND REMONUMENTED WITH A STANDARD HARRISON MONUMENT AND TIED OUT.

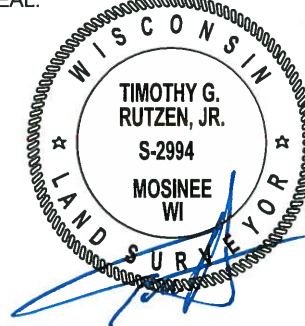
2018 - PLS 2994 FOUND A COTTON GIN SPINDLE IN THE ROAD SURFACE. FOUND NO EVIDENCE OF ANY OF THE TIES OR WITNESSES. REMOVED THE COTTON GIN SPINDLE AND FOUND NO OTHER EVIDENCE OF ANY OTHER MONUMENTATION BELOW THE COTTON GIN SPINDLE LOCATION. ACCEPTED THE COTTON GIN SPINDLE AS THE BEST EVIDENCE OF THE CORNER LOCATION. RE-SET THE COTTON GIN SPINDLE IN THE LOCATION. SET 4 NEW TIES AND MEASURED TO THE TIES.



**LOCATION**

(INDICATE CORNER BY "X")

SEAL:



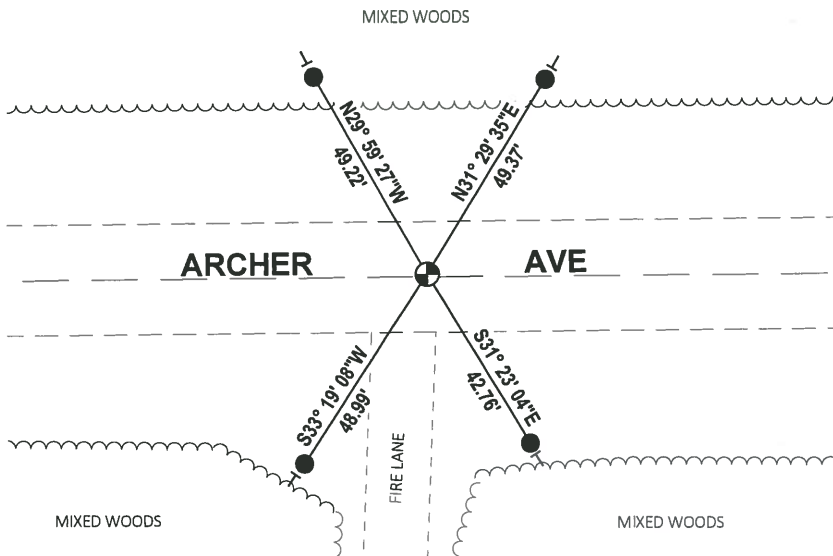
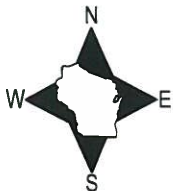
DATA SHOWN HERE ON THIS TIE SHEET IS CORRECT AND COMPLETE TO THE BEST OF MY KNOWLEDGE AND BELIEF.

PROFESSIONAL LAND SURVEYOR

DATE 7-18-18

### TIE SKETCH

NOTE: THE CORNER FALLS 0.5'± NORTH OF THE CENTERLINE OF ARCHER AVE.

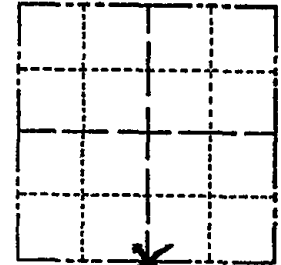


- SET 3/4" x 18" IRON REBAR, 1.50#/FT
- ⊙ FOUND COTTON GIN SPINDLE
- VINYL "T" POST

**ADAMS COUNTY**  
**Survey Monument Record**

CORNER NO. 700 <sup>(82)</sup>  
 SECTION 19  
 TOWN 20  
 RANGE 6

TYPE OF MONUMENT: Standard Harrison  
 STATE PLANE COORDINATES: N \_\_\_\_\_  
 E \_\_\_\_\_  
 ELEVATION — M.S.L. DATUM: \_\_\_\_\_  
 THETA ANGLE: \_\_\_\_\_  
 FIELD BOOK: \_\_\_\_\_ PAGE \_\_\_\_\_

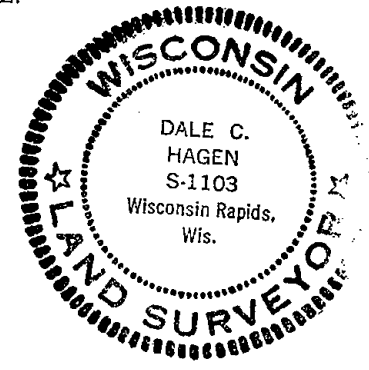


**BASIS FOR MONUMENT LOCATION**

(Use reverse side if necessary)

Show info such as: History of corner, with reference to Vol. and pg, dates, surveyor; exact description of monument replaced; if location computed, by taped or EDM traverse; landowner remarks, etc.

SEAL:  
 LOCATION (Indicated by 'X')



Ran EDM/transit traverse around Section 19 to determine search areas for corners.

Excavation by hand yielded 1-1/2" by 30" Iron Pipe with a rod run through the bottom perpendicular to the length of the pipe.

Could find no record of the pipe.

Accepted pipe as corner and remonumented with Standard Harrison Monument.

1 gone 1 new 5-7-84 DK-SS

CERTIFIED CORRECT:

*Dale C. Hagen*  
 Registered Land Surveyor

DATE: 2/11/75

OK 5-29-79 PK-SS  
 NEWTIE 3 MARCH 94 CR-JG  
 2-GONE, 3-NEWTIES, MON OK 1-11-99-JG-JF

**TIE SKETCH** 1-GONE 1-24-04 JG-DA  
 " " TOP BROKEN 4-14-09 SS

(Show at least four ties)

