

20
SECTION

20
TOWN

06
RANGE

ADAMS COUNTY

COUNTY CORNER NO: 84
ROMPORTOL ID: 42006200020

PUBLIC LAND SURVEY MONUMENT RECORD

TYPE OF MONUMENT: MAG SPIKE
ADAMS COUNTY COORDINATES, NAD 83 (2007)

N. 298144.580

E. 533238.857

ELEVATION- - - - - DATUM - - - - -

FIELD WORK DATE: 05/10/2018

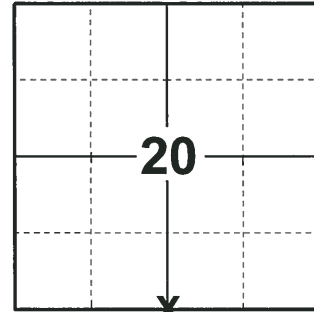
BASIS FOR MONUMENT LOCATION

1976 - PLS 1103 RAN E.D.M./TRANSIT TRAVERSE AROUND SECTIONS 29 AND 32 TO DETERMINE SEARCH AREAS. DID NO EXCAVATE BECAUSE THE SEARCH AREA FALLS IN THE CONSTRUCTION AREA OF STATE HIGHWAY 13. CALCULATED THE CORNER ON-LINE BETWEEN THE ADJACENT SECTION CORNERS AND PROPORTIONALLY TO THE ORIGINAL GOVERNMENT SURVEY DISTANCES. SET HARRISON AND TIED OUT.

1989 - PLS (UNKNOWN) RE-SET $\frac{1}{2}$ "x12" IRON ROD AT CORNER LOCATION.

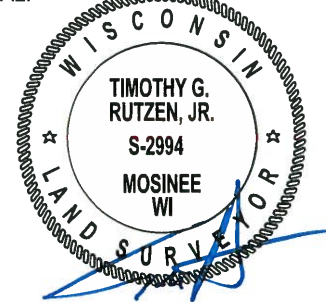
2008 - PLS 2663 PRIOR TO ROAD CONSTRUCTION OF STH 13, FOUND A RAILROAD SPIKE THAT WAS CONSISTENT WITH SURVEY MONUMENT RECORDS ON FILE. ACCEPTED ITS LOCATION. AFTER COMPLETION OF ROAD CONSTRUCTION, THE RAILROAD SPIKE HAD BEEN DISTURBED. RE-SET A 30IN. HARRISON MONUMENT AND TIED OUT.

2018 - PLS 2994 FOUND A MAG SPIKE IN THE ROAD SURFACE, 4 TIES AND 1 WITNESS TREE. REMOVED MAG SPIKE AND FOUND NO EVIDENCE OF ANY OTHER MONUMENTATION BELOW. THE MONUMENT AGREES WITH 3 OF THE 4 EXISTING TIES AND THE WITNESS TREE. ACCEPTED THE MAG SPIKE LOCATION AS THE CORNER LOCATION. RE-SET THE MAG SPIKE AT IT'S LOCATION AND RE-MEASURED TO THE TIES AND WITNESS TREE.



LOCATION
(INDICATE CORNER BY "X")

SEAL:



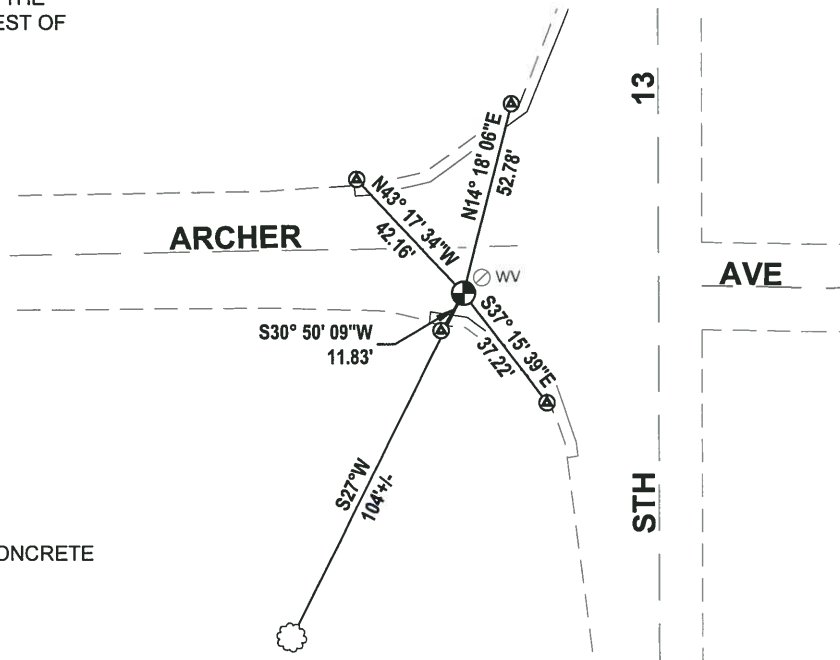
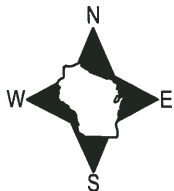
DATA SHOWN HERE ON THIS TIE SHEET IS CORRECT AND COMPLETE TO THE BEST OF MY KNOWLEDGE AND BELIEF.

PROFESSIONAL LAND SURVEYOR

DATE 7-18-18

TIE SKETCH

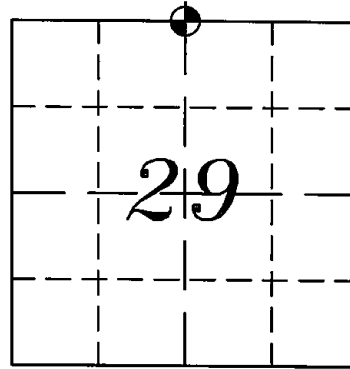
NOTE: THE CORNER FALLS $12\pm$ SOUTH OF THE CENTERLINE OF ARCHER AVE AND $53\pm$ WEST OF THE CENTERLINE OF STH 13.



- ⊕ FOUND WISDOT ALUMINUM CAP IN CONCRETE
- ⊗ FOUND MAG SPIKE
- ⊙ WITNESS TREE

ADAMS COUNTY
SURVEY MONUMENT RECORD

TYPE OF MONUMENT: HARRISON MONUMENT
 STATE PLANE COORDINATES: N _____
 E _____
 ELEVATION: _____
 FIELD BOOK: _____ PAGE _____



CORNER NO. ~~977~~
84

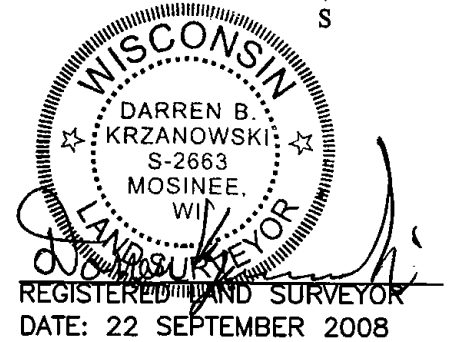
SECTION 29
TOWN 20 NORTH
RANGE 6 EAST

ROME
CITY, VILLAGE, TOWN

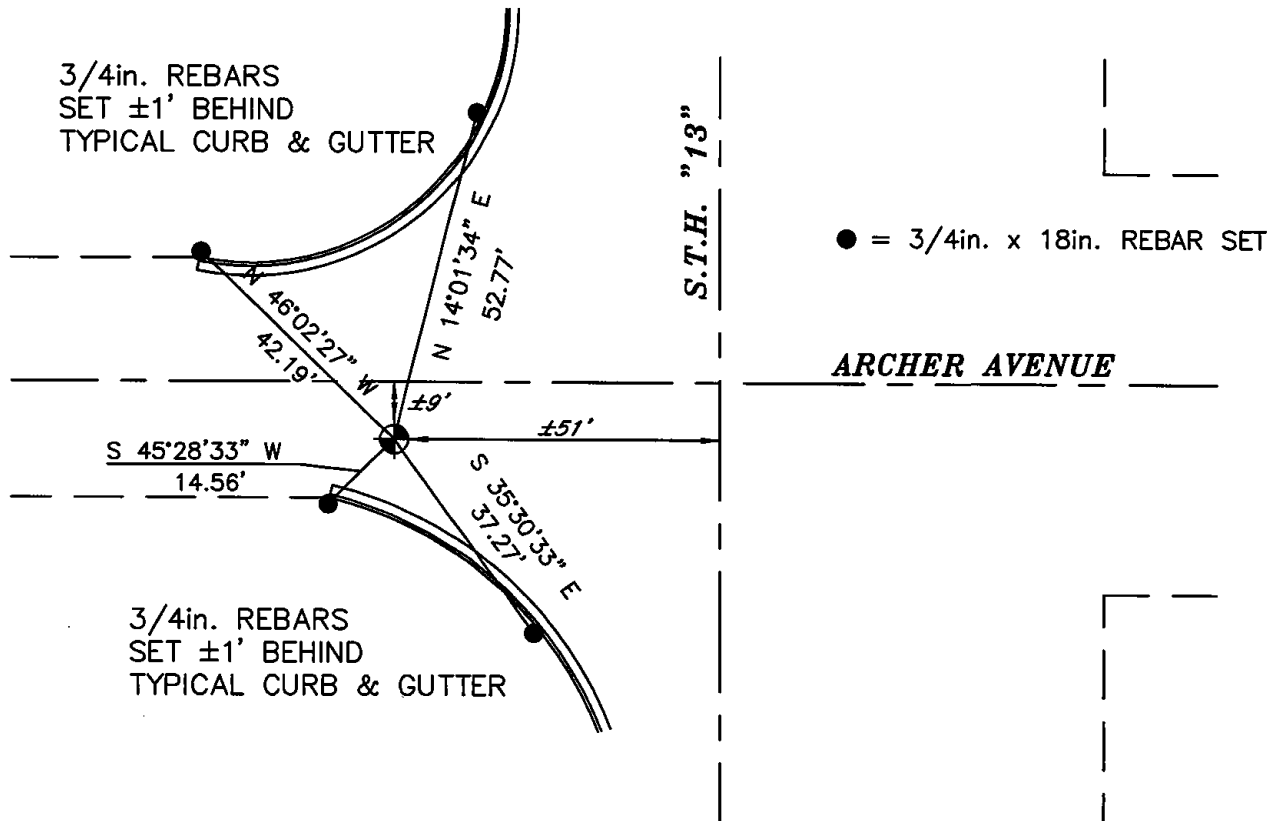


BASIS FOR CORNER LOCATION:

PRIOR TO ROAD CONSTRUCTION OF STH 13 FOUND A RAILROAD SPIKE THAT WAS CONSISTENT WITH SURVEY MONUMENT RECORD ON FILE AND ACCEPTED ITS LOCATION. AFTER COMPLETION OF ROAD CONSTRUCTION THE RAILROAD SPIKE HAD BEEN DISTURBED. SET A 30in. HARRISON MONUMENT



TIE SKETCH



ADAMS COUNTY

Survey Monument Record

TYPE OF MONUMENT: Harrison *RESET (1989)*
1/2" x 12" IRON ROD

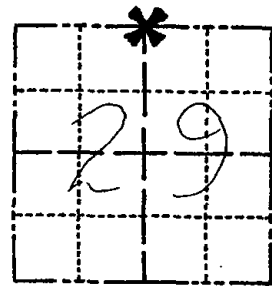
STATE PLANE COORDINATES: N _____
 E _____

ELEVATION — M.S.L. DATUM: _____

THETA ANGLE: _____

FIELD BOOK: 37 PAGE 28

CORNER NO. 947 (84)
 SECTION 29
 TOWN 20
 RANGE 6



LOCATION
 (Indicated by 'X')

SEAL:



BASIS FOR MONUMENT LOCATION

(Use reverse side if necessary)

Show info such as: History of corner, with reference to Vol. and pg, dates, surveyor; exact description of monument replaced; if location computed, by taped or EDM traverse; landowner remarks, etc.

Ran EDM/transit traverse around Sections 29 and 32 to determine search areas.

Did not excavate because search area falls with the construction area of State Highway 13.

Set corner on line between the adjacent section corners proportionally to the original government survey distances.

Set 4-15-1976;

1-gone no new 5-7-84 SS-DK

OK 6-7-79 RN-RN
 OK 3 MARCH 74 CR-JG
 OK 12-28-98-JG
 1-GONE, 1-29-04, JG-DA

CERTIFIED CORRECT:

Dale C Hagen
 Registered Land Surveyor
 DATE: 6-1-1976

TIE SKETCH

(Show at least four ties)

NOTE

Ties in trees to nail in disc.

