

PUBLIC LAND SURVEY MONUMENT RECORD

TYPE OF MONUMENT: HARRISON
 ADAMS COUNTY COORDINATES, NAD 83 (2007)

N. 298296.944

E. 546476.502

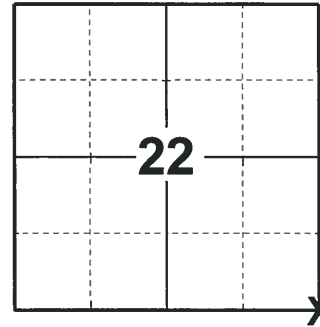
ELEVATION- - - - - DATUM - - - - -

FIELD WORK DATE: 05/22/2018

BASIS FOR MONUMENT LOCATION

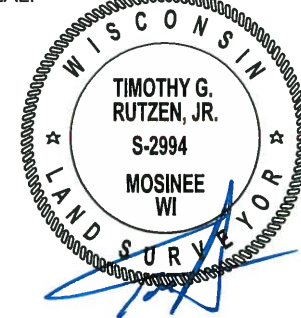
1981 - PLS 878 NO RECORD OF ANY RESURVEYS. PERRY-CARRINGTON SURVEY FOR BURT MORRIS DOES NOT SHOW A CORNER AT THIS LOCATION. COULD NOT FIND ANY EVIDENCE OF THE ORIGINAL OR SUBSEQUENT MONUMENT. THIS CORNER WAS ESTABLISHED BY DOUBLE PROPORTIONATE METHOD. SET A HARRISON AND TIED OUT.

2018 - PLS 2994 FOUND A HARRISON MONUMENT 6" UNDER THE WATER NEXT TO A RAILROAD TIE FENCE POST. FOUND NO EVIDENCE OF ANY OF THE WITNESSES. ACCEPTED THE HARRISON MONUMENT AS THE BEST EVIDENCE OF THE CORNER LOCATION. SET 4 NEW TIES AND MEASURED TO THE TIES.



LOCATION
 (INDICATE CORNER BY "X")

SEAL:



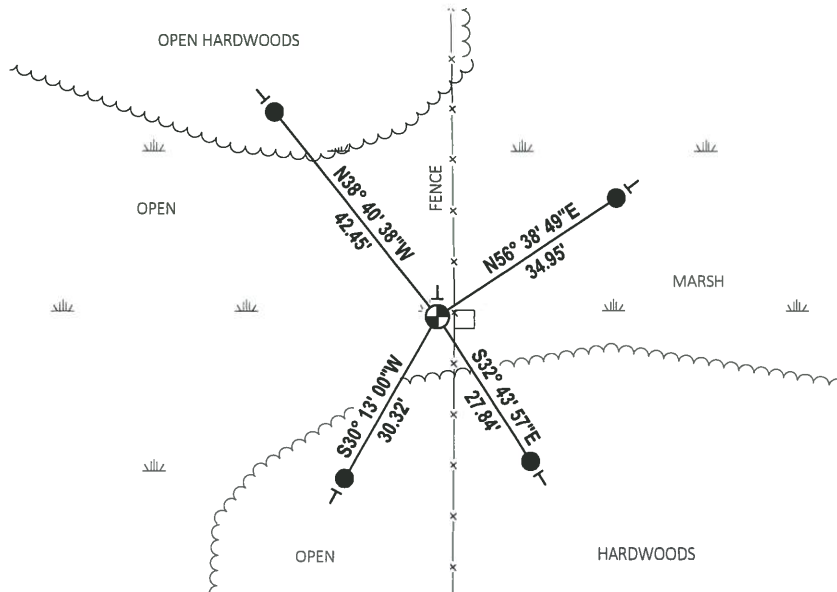
DATA SHOWN HERE ON THIS TIE SHEET IS CORRECT AND COMPLETE TO THE BEST OF MY KNOWLEDGE AND BELIEF.

PROFESSIONAL LAND SURVEYOR

DATE 7-18-18

- TIE SKETCH

NOTE: THE CORNER FALLS 1± WEST OF THE FENCE LINE.

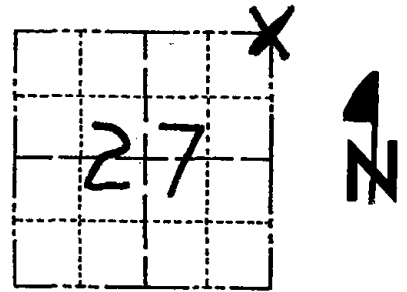


- SET 3/4" x 18" IRON REBAR, 1.50#/FT
- ⊕ FOUND HARRISON MONUMENT
- RAILROAD TIE W/DND SIGN
- VINYL "T" POST

Government Land Corner Certificate

Adams County
 TYPE OF MONUMENT: Harrison
 STATE PLANE COORDINATES: N _____
 E _____
 ELEVATION — M.S.L. DATUM: _____
 THETA ANGLE: _____
 FIELD BOOK: 86 PAGE 111
 DRAWN BY: T.H.

CORNER NO. 89
 SECTION 27
 TOWN 20
 RANGE 6



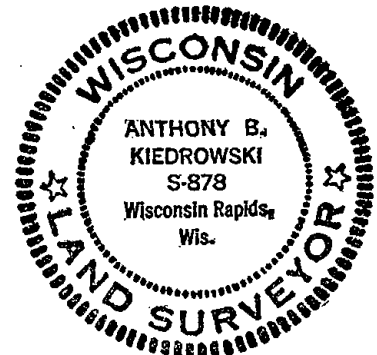
LOCATION
 (Indicated by 'X')

BASIS FOR MONUMENT LOCATION

Show info such as: History of corner, with reference to Vol. and pg., dates, surveyor; exact description of monument replaced; if location computed, by taped or EDM traverse; landowner remarks, etc. (Use reverse side if necessary)

No record of resurveys. Perry-Carrington survey for Burt Morris does not show a corner here. Could find no evidence of original or subsequent monument. This corner set by double proportionate method.

SEAL:



DATA SHOWN HERE ON
 CERTIFIED CORRECT:

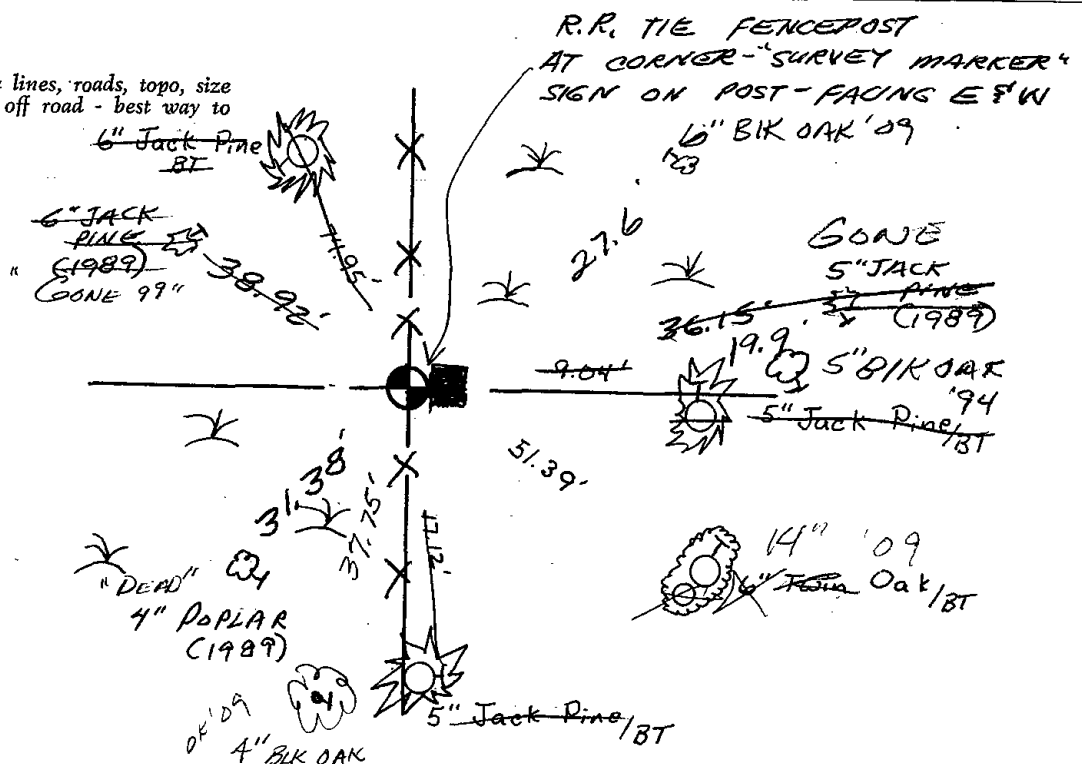
Anthony B. Kiedrowski
 Registered Land Surveyor
 1/3/81

DATE:

TIE SKETCH

Show at least four ties, also fence lines, roads, topo, size and type of witness trees' and if off road - best way to arrive at corner.

Nail & Disk in Trees



R.R. TIE FENCEPOST
 AT CORNER - "SURVEY MARKER"
 SIGN ON POST - FACING E & W

MAINTENANCE RECORD

DATE	BY WHOM	REMARKS
6-13-89	MK-SS	3 NEW TIES
3-8-94	SS	1 " "
4-8-99	JG-SS	1-GONE (-NEW), MON. OK
12-17-09	SS	1 NEW TIE