

Section 23 Town 20 Range 6

County Corner No. 90

# ADAMS COUNTY

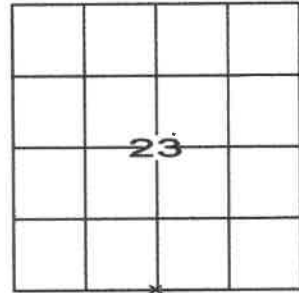
## PUBLIC LAND SURVEY MONUMENT RECORD

Type of Monument Harrison

Adams County Coordinates (NAD 83, 2011)

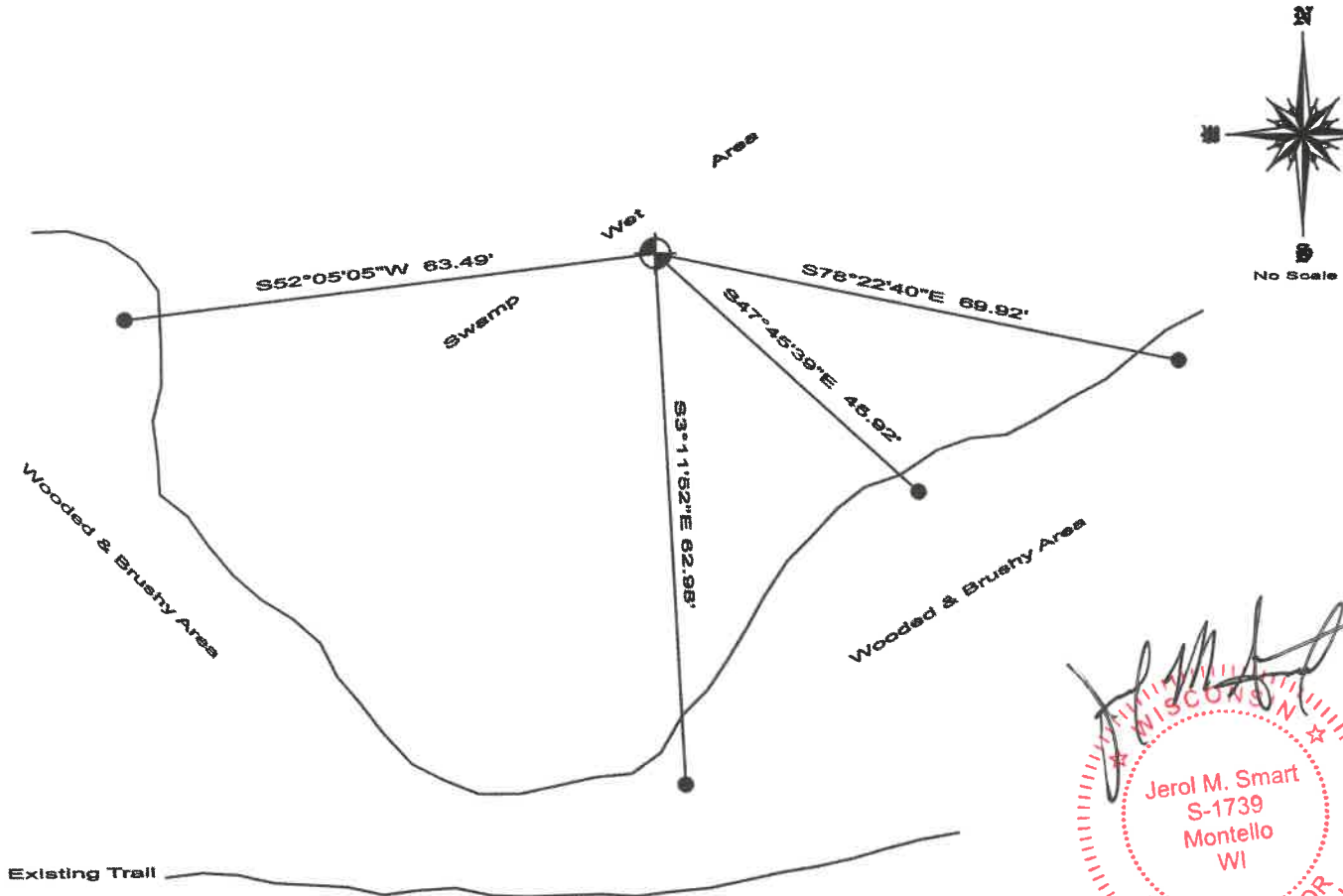
Northing 298305.848

Easting 549147.950



### Corner History and Basis for Location

- 1981 - PLS 878 found no evidence of previous monumentation. Set Harrison on online and equidistant between SW and SE corners as done by Co. Surveyor M.C.Smith, 1915.
- 2018 - PLS 2994 found Harrison monument and set new ties.
- 2023 - PLS 1739 found Harrison monument, 4 ties and an error in 2018 tie sheet and section summary. Most easterly tie is shown as the Harrison monument and the most northerly tie is shown as a 3/4" rebar. Found that the most easterly tie is a 3/4" rebar and the most northerly is a Harrison monument. Accepted monument and ties and obtained new coordinates.



*[Handwritten Signature]*  
 WISCONSIN  
 Jerol M. Smart  
 S-1739  
 Montello  
 WI  
 LAND SURVEYOR  
 OCT. 25, 2023

- Found Harrison monument
- Found 3/4" Iron rod

I, Jerol M. Smart, P.L.S., Adams County Surveyor, do hereby certify that the information shown hereon is correct and that I have fully complied with Wisconsin Statutes and Admin. code to the best of my knowledge and belief.

## PUBLIC LAND SURVEY MONUMENT RECORD

TYPE OF MONUMENT: HARRISON  
ADAMS COUNTY COORDINATES, NAD 83 (2007)

N. 298291.761

E. 549216.441

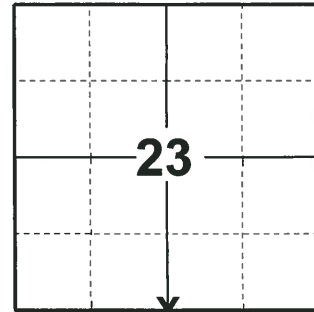
ELEVATION- \_\_\_\_\_ DATUM \_\_\_\_\_

FIELD WORK DATE: 05/22/2018

### BASIS FOR MONUMENT LOCATION

1981 - PLS 878 NO EVIDENCE OF ORIGINAL OR SUBSEQUENT MONUMENT WAS FOUND. THE POSITION WAS CALCULATED ON LINE AND EQUIDISTANT BETWEEN SECTION CORNERS. M.C. SMITH SET A POST HERE IN 1915, PER 2/15. SET HARRISON AND TIED OUT.

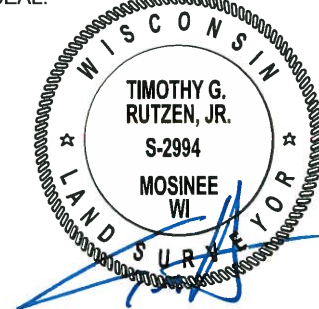
2018 - PLS 2994 FOUND A HARRISON MONUMENT 12" UNDER THE WATER SURFACE. FOUND NO EVIDENCE OF ANY OF THE WITNESSES. ACCEPTED THE HARRISON MONUMENT AS THE BEST EVIDENCE OF THE CORNER LOCATION. SET 4 NEW TIES AND MEASURED TO THE TIES.



LOCATION

(INDICATE CORNER BY "X")

SEAL:



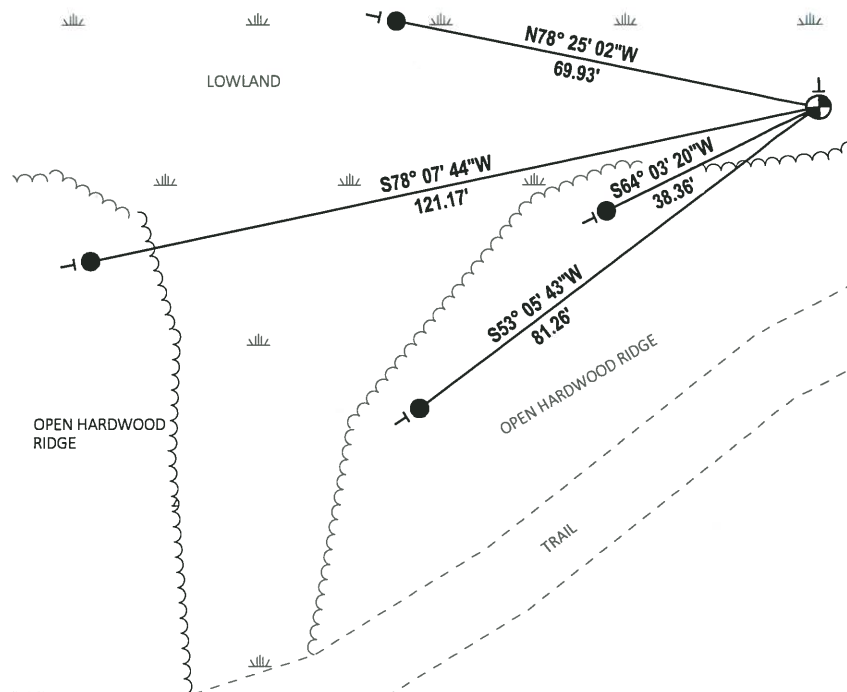
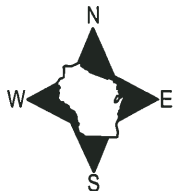
DATA SHOWN HERE ON THIS TIE SHEET IS CORRECT AND COMPLETE TO THE BEST OF MY KNOWLEDGE AND BELIEF.

PROFESSIONAL LAND SURVEYOR

DATE 7-18-18

### TIE SKETCH

NOTE: THE CORNER FALLS 34'± NORTH OF THE CENTERLINE OF THE TRAIL.

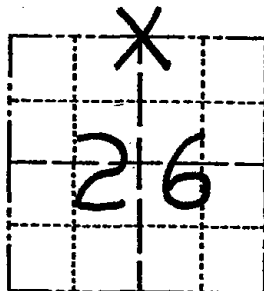


- SET 3/4" x 18" IRON REBAR, 1.50#/FT
- ⊕ FOUND HARRISON MONUMENT
- VINYL "T" POST

# Government Land Corner Certificate

Adams County  
 TYPE OF MONUMENT: Harrison  
 STATE PLANE COORDINATES: N \_\_\_\_\_  
 E \_\_\_\_\_  
 ELEVATION — M.S.L. DATUM: \_\_\_\_\_  
 THETA ANGLE: \_\_\_\_\_  
 FIELD BOOK: 86 PAGE 117  
 DRAWN BY: T.H.

CORNER NO. 90  
 SECTION 26  
 TOWN 20  
 RANGE 6



LOCATION  
(Indicated by 'X')

## BASIS FOR MONUMENT LOCATION

Show info such as: History of corner, with reference to Vol. and pg., dates, surveyor; exact description of monument replaced; if location computed, by taped or EDM traverse; landowner remarks, etc. (Use reverse side if necessary)

no evidence  
 of original or subsequent monument. This corner  
 set on line and equidistant between section corners.  
 M.C. Smith set post here in 1915, per 2/15.

SEAL:



DATA SHOWN HERE ON  
 CERTIFIED CORRECT:

*Anthony B. Kiedrowski*  
 Registered Land Surveyor

DATE: 1/2/81

## TIE SKETCH

Show at least four ties, also fence lines, roads, topo, size and type of witness trees and if off road - best way to arrive at corner.

Nail & Disk in Trees  
 DND Sign & Post  
 Next to Harrison

