

23
SECTION

20
TOWN

06
RANGE

ADAMS COUNTY

COUNTY CORNER NO: 91

ROMPORTOL ID: 42006230000

PUBLIC LAND SURVEY MONUMENT RECORD

TYPE OF MONUMENT: HARRISON
ADAMS COUNTY COORDINATES, NAD 83 (2007)

N. 298315.680

E. 551819.253

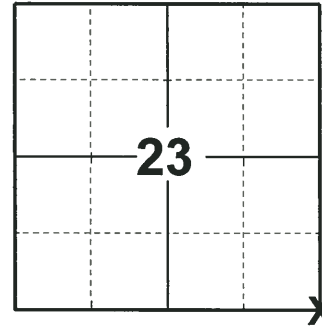
ELEVATION- DATUM

FIELD WORK DATE: 05/22/2018

BASIS FOR MONUMENT LOCATION

1977 - PLS 1103 RAN E.D.M./T2 TRAVERSE AROUND SECTION 25 AND PARTS OF ADJOINING SECTIONS TO DETERMINE THE SEARCH AREA FOR INVESTIGATION. EXCAVATION WITH A BACKHOE YIELDED NO EVIDENCE OF THE ORIGINAL CORNER OR ANY REMONUMENTATION. FOUND NO EVIDENCE OF THE BEARING TREES. CALCULATED THE CORNER BY DOUBLING OVER LINE AND DISTANCE BETWEEN THE NW AND W1/4 CORNERS OF SECTION 24. SET A HARRISON MONUMENT AND TIED OUT ON NOV. 9, 1977.

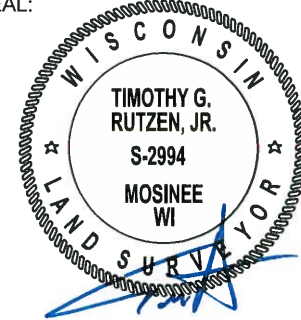
2018 - PLS 2994 FOUND A HARRISON MONUMENT 6" BELOW THE GROUND SURFACE AND 2 TIES. THE MONUMENT AGREES WITH THE EXISTING TIES. ACCEPTED THE HARRISON MONUMENT AS THE CORNER LOCATION. SET 2 NEW TIES AND MEASURED TO THE TIES.



LOCATION

(INDICATE CORNER BY "X")

SEAL:



DATA SHOWN HERE ON THIS TIE SHEET IS CORRECT AND COMPLETE TO THE BEST OF MY KNOWLEDGE AND BELIEF.

PROFESSIONAL LAND SURVEYOR

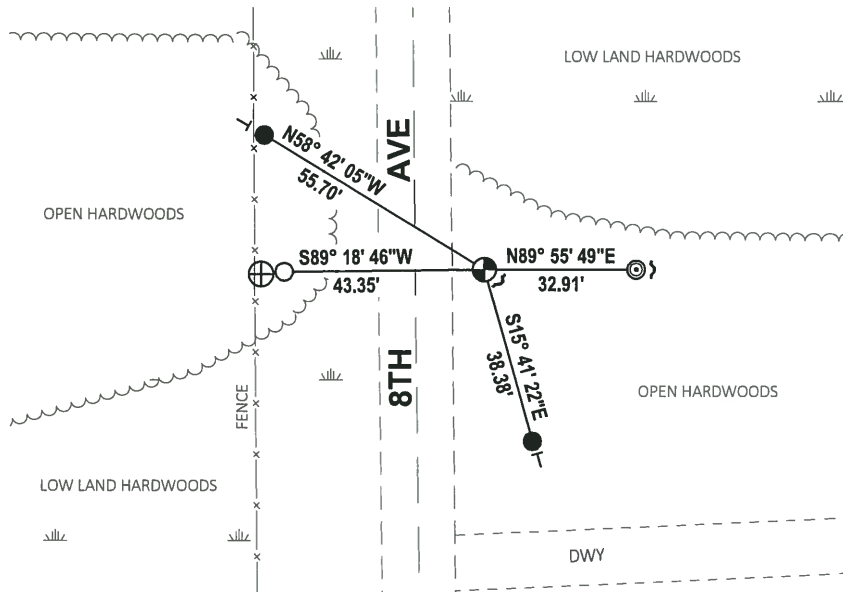
DATE 7-18-18

- TIE SKETCH

NOTE: THE CORNER FALLS 15'± EAST OF THE CENTERLINE OF 8TH AVE.



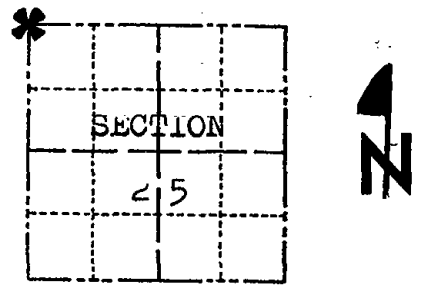
- SET 3/4" x 18" IRON REBAR, 1.50#/FT
- FOUND 3/4" IRON ROD
- ⊙ FOUND 2-3/8" O.D. IRON PIPE
- ⊕ FOUND HARRISON MONUMENT
- ┘ STEEL FENCE POST
- └ VINYL "T" POST
- ⊕ 4" STEEL POST



Government Land Corner Certificate

ADAMS County
 TYPE OF MONUMENT: HARRISON STD.
 STATE PLANE COORDINATES: N _____
 E _____
 ELEVATION — M.S.L. DATUM: _____
 THETA ANGLE: _____
 FIELD BOOK: 57 PAGE 42
 DRAWN BY: SCOTT SORENSEN

CORNER NO. 91
 SECTION 25
 TOWN 20
 RANGE 6



LOCATION
(Indicated by 'X')

BASIS FOR MONUMENT LOCATION

Show info such as: History of corner, with reference to Vol. and pg., dates, surveyor; exact description of monument replaced; if location computed, by taped or EDM traverse; landowner remarks, etc. (Use reverse side if necessary)

Ran EDM/T2 traverse around Section 25 and parts of adjoining sections to determine search area for investigation.

Excavation with backhoe yielded no evidence on the original corner or any remonumentation. Could find no evidence of bearing trees.

Relocated corner by doubling over line and distance between NW and W $\frac{1}{4}$ corners of Section 24.

Set monument on Nov. 9, 1977.

OK 4-13-79 JK-SS
 1 new 4-27-84 SS-DK
 HAR OK 3-8-89 GR-SS
 OK 2-16-99, JG-SS

SEAL:



DATA SHOWN HERE ON
CERTIFIED CORRECT:

Dale C. Hagen
Registered Land Surveyor

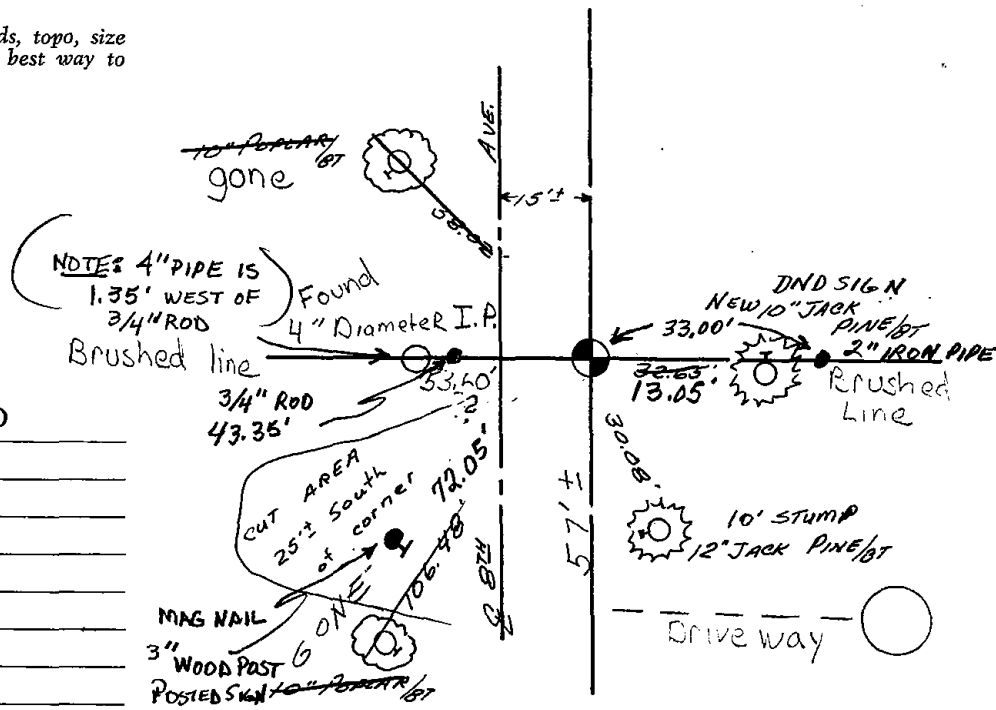
DATE: December 27, 1977

TIE SKETCH

Show at least four ties, also fence lines, roads, topo, size and type of witness trees' and if off road - best way to arrive at corner.

Note

Ties in trees to nail in disc.



MAINTENANCE RECORD

Date	Init.	Remarks
3-01-94	GR-SS	OK
2-24-04	JG	4-NEW
3-04-09	SS	OK