

PUBLIC LAND SURVEY MONUMENT RECORD

TYPE OF MONUMENT: HARRISON
ADAMS COUNTY COORDINATES, NAD 83 (2007)

N. 295495.537

E. 530662.927

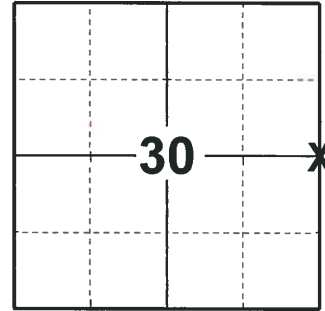
ELEVATION- _____ DATUM _____

FIELD WORK DATE: 05/29/2018

BASIS FOR MONUMENT LOCATION

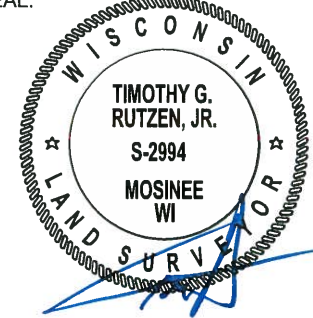
1976 - PLS 1103 RAN E.D.M./TRANSIT TRAVERSE AROUND SECTION 29 AND 32 TO DETERMINE SEARCH AREAS. EXCAVATION WITH A BACKHOE YIELDED NO EVIDENCE OF THE ORIGINAL CORNER OR SUBSEQUENT REMONUMENTATION. CALCULATED THE CORNER ON LINE BETWEEN THE ADJACENT SECTION CORNERS AND PROPORTIONAL TO THE ORIGINAL GOVERNMENT SURVEY DISTANCES. SET HARRISON AND TIED OUT.

2018 - PLS 2994 FOUND A HARRISON MONUMENT 10" BELOW THE ROAD SURFACE, 2 TIES AND 1 WITNESS TREE. THE MONUMENT AGREES WITH THE EXISTING TIES AND WITNESS TREE. ACCEPTED THE HARRISON MONUMENT AS THE CORNER LOCATION. SET 2 NEW TIES AND MEASURED TO THE TIES AND WITNESS TREE.



LOCATION
(INDICATE CORNER BY "X")

SEAL:



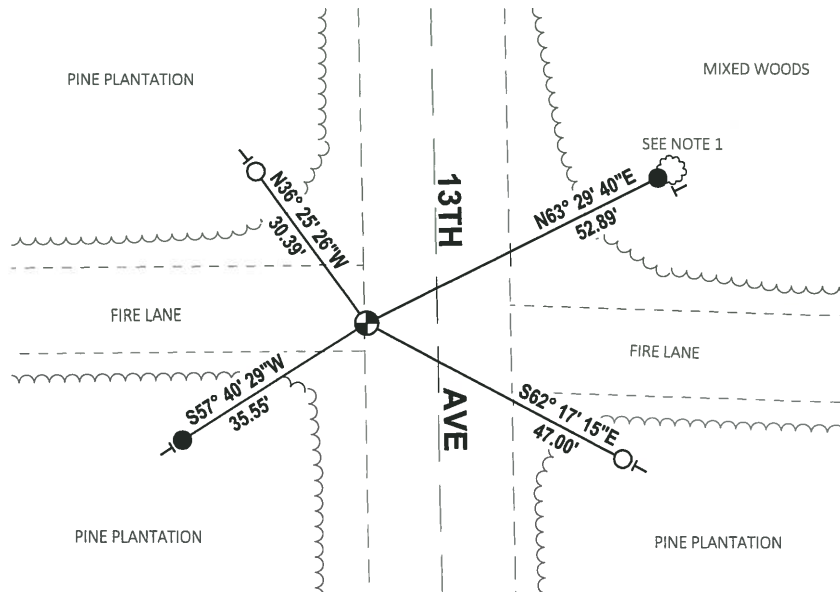
DATA SHOWN HERE ON THIS TIE SHEET IS CORRECT AND COMPLETE TO THE BEST OF MY KNOWLEDGE AND BELIEF.

PROFESSIONAL LAND SURVEYOR

DATE 7-18-18

TIE SKETCH

NOTE 1: THE WITNESS TREE FALLS N63°E, 55'± OF THE CORNER LOCATION.
NOTE 2: THE CORNER FALLS 11'± WEST OF THE CENTERLINE OF 13TH AVE.

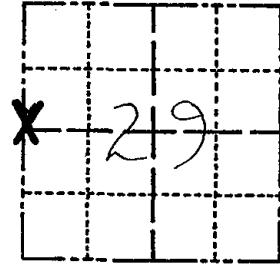


- SET 3/4" x 18" IRON REBAR, 1.50#/FT
- FOUND 3/4" IRON ROD
- ⊕ FOUND HARRISON MONUMENT
- ┆ VINYL "T" POST
- ☁ WITNESS TREE

ADAMS COUNTY
Survey Monument Record

TYPE OF MONUMENT: Harrison
 STATE PLANE COORDINATES: N _____
 E _____
 ELEVATION — M.S.L. DATUM: _____
 THETA ANGLE: _____
 FIELD BOOK: _____ PAGE _____

CORNER NO. 980 ⁹⁵
 SECTION 29
 TOWN 20
 RANGE 6E



LOCATION
 (Indicated by 'X')

BASIS FOR MONUMENT LOCATION

(Use reverse side if necessary)

Show info such as: History of corner, with reference to Vol. and pg, dates, surveyor; exact description of monument replaced; if location computed, by taped or EDM traverse; landowner remarks, etc.

Ran EDM/transit traverse around Section 29 and 32 to determine search areas.

Excavation with backhoe yielded no evidence of the original corner or subsequent remonumentation.

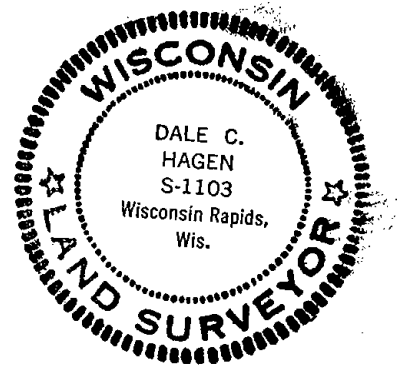
Set corner on line between the adjacent section corners and proportional to the original government survey distances.

3 new 5-7-84 SS-DK *NOTE*

OK 7-13-79 RN-RW
 2 NEW TIES 2-12-89 MK-SS
 OK 3 MARCH 94 CR-JG
 OK 12-28-98-JG
 1-GONE, 2-18-89-JG

CERTIFIED CORRECT:

Dale C. Hagen
 Registered Land Surveyor
 DATE: 6-1-1976



TIE SKETCH

(Show at least four ties)

NOTE

Ties in trees to nail in disc.

