

## PUBLIC LAND SURVEY MONUMENT RECORD

TYPE OF MONUMENT: SURVEY NAIL  
 ADAMS COUNTY COORDINATES, NAD 83 (2007)

N. 295567.647

E. 541192.190

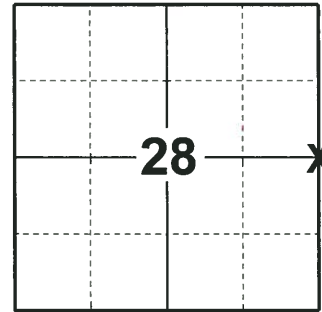
ELEVATION- \_\_\_\_\_ DATUM \_\_\_\_\_

FIELD WORK DATE: 05/29/2018

### BASIS FOR MONUMENT LOCATION

1974 - PLS 1103 EXCAVATION WITH A BACKHOE YIELDED A CHARCOAL PIT WITH CHARCOAL STAKE. REPLACED THE STAKE WITH A STANDARD HARRISON MONUMENT AND TIED OUT.

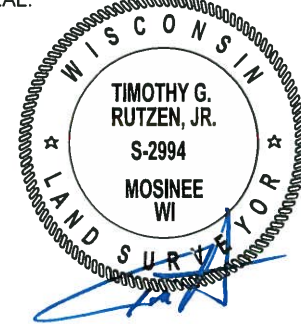
2018 - PLS 2994 FOUND A MAG NAIL IN THE ROAD SURFACE AND 1 WITNESS. REMOVED THE MAG NAIL AND FOUND NO EVIDENCE OF ANY OTHER MONUMENTATION BELOW. THE MAG NAIL LOCATION AGREES WITH THE EXISTING TIE. ACCEPTED THE MAG NAIL LOCATION AS THE CORNER LOCATION. REPLACED THE MAG NAIL WITH A SURVEY NAIL. SET 4 NEW TIES AND MEASURED TO THE TIES AND WITNESS.



### LOCATION

(INDICATE CORNER BY "X")

SEAL:



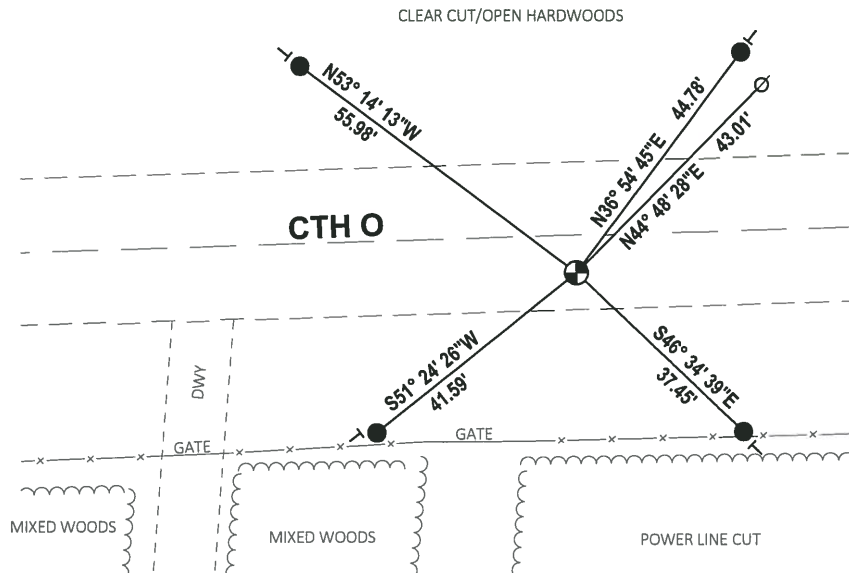
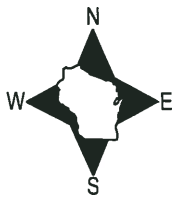
DATA SHOWN HERE ON THIS TIE SHEET IS CORRECT AND COMPLETE TO THE BEST OF MY KNOWLEDGE AND BELIEF.

PROFESSIONAL LAND SURVEYOR

DATE 7-18-18

### TIE SKETCH

NOTE: THE CORNER FALLS 6± SOUTH OF THE CENTERLINE OF CTH O.

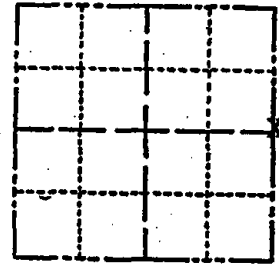


ADAMS COUNTY

Survey Monument Record

CORNER NO. 377  
SECTION 28  
TOWN 20 N  
RANGE 6 E

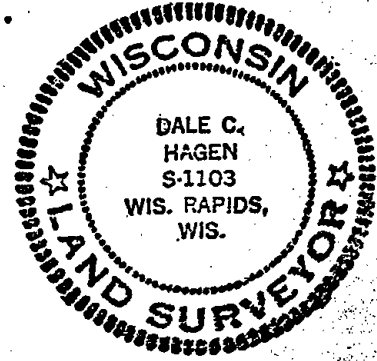
TYPE OF MONUMENT: STANDARD HARRISON  
STATE PLANE COORDINATES: N \_\_\_\_\_  
E \_\_\_\_\_  
ELEVATION — M.S.L. DATUM: \_\_\_\_\_  
THETA ANGLE: \_\_\_\_\_  
FIELD BOOK: 111 PAGE 9



LOCATION (Indicated by 'X')

SEAL:

29.25  
37.40



BASIS FOR MONUMENT LOCATION

(Use reverse side if necessary)

Show info such as: History of corner, with reference to Vol. and pg. dates, surveyor; exact description of monument replaced; if location computed, by taped or EDM traverse; landowner remarks, etc.

Excavation with backhoe yielded charcoal pit with charcoal stake. Stake replaced with Standard Harrison monument.

- Ok 5-7-84 SS-DK
- OK 3-9-89 SS
- OK 3-8-94 SS
- OK 1-21-99 DBR

OK 6-7-79 RW-PW

RETIRED CORNER & REMOVED HARRISON FOR CONSTR. LEFT HARRISON AT 12" RED OAK DIE TO BE RESET AFTER CONSTR.

2-18-04 TIES OK, (HARRISON) CORNER NEEDS TO BE RESET - JG

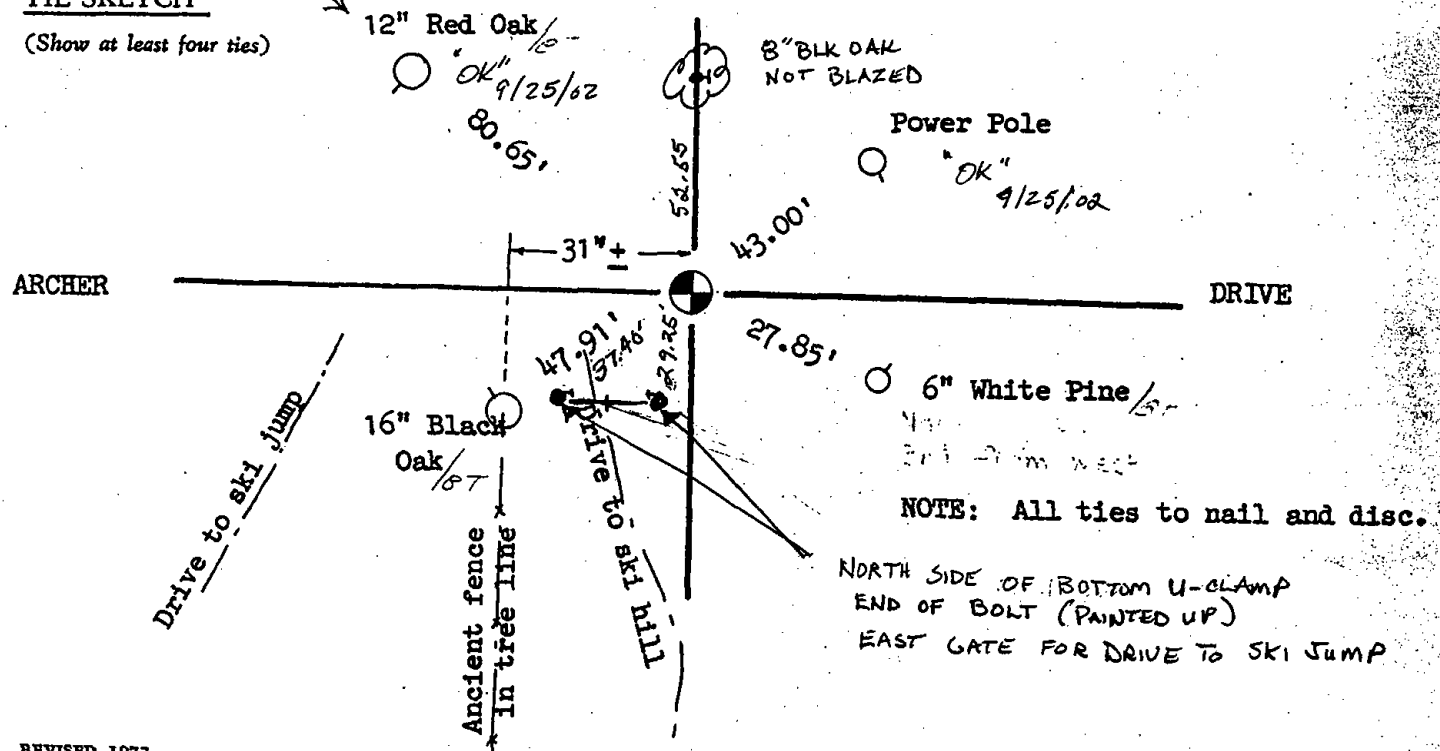
CERTIFIED CORRECT:

Dale C. Hagen  
Registered Land Surveyor

DATE: April 20, 1974

TIE SKETCH

(Show at least four ties)



ADAMS COUNTY

Survey Monument Record

TYPE OF MONUMENT: STANDARD HARRISON

STATE PLANE COORDINATES: N \_\_\_\_\_ E \_\_\_\_\_

ELEVATION — M.S.L. DATUM: \_\_\_\_\_

THETA ANGLE: \_\_\_\_\_

FIELD BOOK: 111 PAGE 9

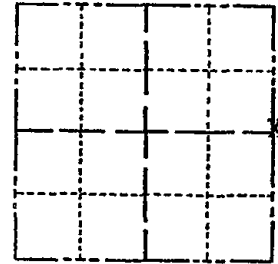
CORNER NO. 377

SECTION 28

TOWN 20 N

RANGE 6 E

97



LOCATION (Indicated by 'X')

SEAL:

BASIS FOR MONUMENT LOCATION

(Use reverse side if necessary)

Show info such as: History of corner, with reference to Vol. and pg, dates, surveyor; exact description of monument replaced; if location computed, by taped or EDM traverse; landowner remarks, etc.

Excavation with backhoe yielded charcoal pit with charcoal stake. Stake replaced with Standard Harrison monument.

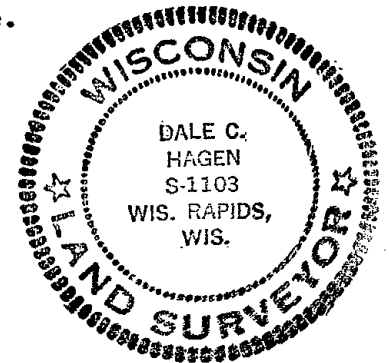
Ok 5-7-84 SS-DK

OK 3-9-89 SS

OK 3-8-94 SS

OK 1-21-99 DBR

OK 6-7-79 RN-RW



CERTIFIED CORRECT:

Dale C. Hagen  
Registered Land Surveyor

DATE: April 20, 1974

TIE SKETCH

(Show at least four ties)

