

25 SECTION 20 TOWN 06 RANGE

ADAMS COUNTY

COUNTY CORNER NO: 100
ROMPORTOL ID: 42006252000

PUBLIC LAND SURVEY MONUMENT RECORD

TYPE OF MONUMENT: HARRISON
ADAMS COUNTY COORDINATES, NAD 83 (2007)

N. 295689.755

E. 557145.015

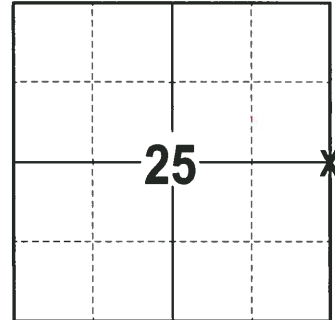
ELEVATION- --- DATUM ---

FIELD WORK DATE: 02/05/2018

BASIS FOR MONUMENT LOCATION

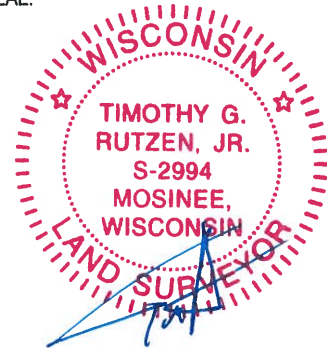
1980 - PLS 1478 CALCULATED POSITION USING SINGLE PROPORTIONATE MEASUREMENT AND ON LINE BETWEEN THE NE CORNER OF SECTION 13-20-6 AND THE SE CORNER OF SECTION 25-29-6. AFTER AN EXTENSIVE EDM TRANSIT TRAVERSE OF SECTIONS 13, 24, 25, 36, T20N, R6E AND SECTIONS 18, 19, 30, 31, T20N, R7E, REVEALED NO EVIDENCE OF PREVIOUS MONUMENTATION AT THIS CORNER. SET A HARRISON MONUMENT AT CALCULATED POSITION AND TIED OUT.

2018 - PLS 2994 FOUND A HARRISON MONUMENT 4" ABOVE THE GROUND SURFACE. FOUND NO EVIDENCE OF ANY OF THE WITNESSES DUE TO PAST LOGGING ACTIVITY. ACCEPTED THE HARRISON MONUMENT AS THE BEST EVIDENCE OF THE CORNER LOCATION. SET 4 NEW TIES AND MEASURED TO THE TIES.



LOCATION
(INDICATE CORNER BY "X")

SEAL:

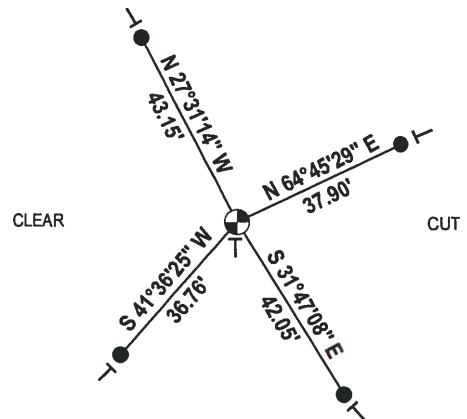
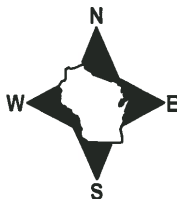


DATA SHOWN HERE ON THIS TIE SHEET IS CORRECT AND COMPLETE TO THE BEST OF MY KNOWLEDGE AND BELIEF.

PROFESSIONAL LAND SURVEYOR

DATE 3-1-18

- TIE SKETCH -



- 3/4" x 18" IRON REBAR SET, 1.50#/FT
- ⊕ HARRISON FOUND
- ┊ VINYL "T" POST

FURN →

Government Land Corner Certificate

ADAMS County

CORNER NO. 100
SECTION 25
TOWN 20
RANGE 6

TYPE OF MONUMENT: HARRISON STANDARD *Temp 1030 IP to be replaced*

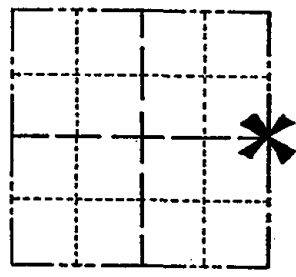
STATE PLANE COORDINATES: N _____
E _____

ELEVATION — M.S.L. DATUM: _____

THETA ANGLE: _____

FIELD BOOK: 78 PAGE 99

DRAWN BY: G. RHINEHART



LOCATION
(Indicated by 'X')

BASIS FOR MONUMENT LOCATION

Show info such as: History of corner, with reference to Vol. and pg., dates, surveyor; exact description of monument replaced; if location computed, by taped or EDM traverse; landowner remarks, etc. (Use reverse side if necessary)

Set single proportionate and on line between the NE corner of section 13-20-6 and the SE corner of section 25-20-6, after an extensive EDM/transit traverse of sections 13, 24, 25, 36, T20N, R6E and sections 18, 19, 30, 31, T20N, R7E, and careful search revealed no evidence of previous monumentation at this corner.

SEAL:



DATA SHOWN HERE ON CERTIFIED CORRECT:

Gregory P Rhinehart
Registered Land Surveyor

DATE: 1/22/80

TIE SKETCH

Show at least four ties, also fence lines, roads, topo, size and type of witness trees and if off road - best way to arrive at corner.

