

26  
SECTION

20  
TOWN

06  
RANGE

# ADAMS COUNTY

COUNTY CORNER NO: 102

ROMPORTOL ID: 4200630020

## PUBLIC LAND SURVEY MONUMENT RECORD

TYPE OF MONUMENT: HARRISON (BROKEN-TOP)  
ADAMS COUNTY COORDINATES, NAD 83 (2007)

N. 292841.344

E. 528081.805

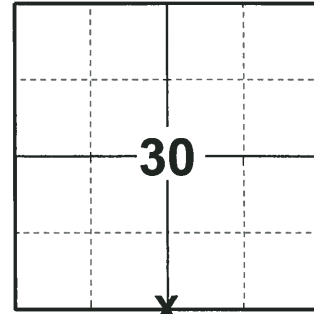
ELEVATION-      DATUM     

FIELD WORK DATE: 05/29/2018

### BASIS FOR MONUMENT LOCATION

1981 - PLS 1167 FOUND A 1-1/2" x 36" IRON PIPE WITH CROSS BARS NEAR THE BOTTOM. ACCEPTED SAID PIPE AS THE CORNER LOCATION AND REPLACED IT WITH A HARRISON MONUMENT AND TIED OUT.

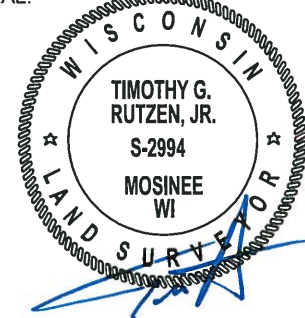
2018 - PLS 2994 FOUND A HARRISON MONUMENT WITH A BROKEN-TOP 24" BELOW THE GROUND SURFACE, 1 TIE AND 2 PROPERTY IRONS. THE MONUMENT AGREES WITH THE EXISTING TIE. ACCEPTED THE HARRISON MONUMENT WITH A BROKEN-TOP AS THE CORNER LOCATION. SET 1 NEW TIE (USED THE 2 PROPERTY IRONS AS TIES) AND MEASURED TO THE TIES.



LOCATION

(INDICATE CORNER BY "X")

SEAL:



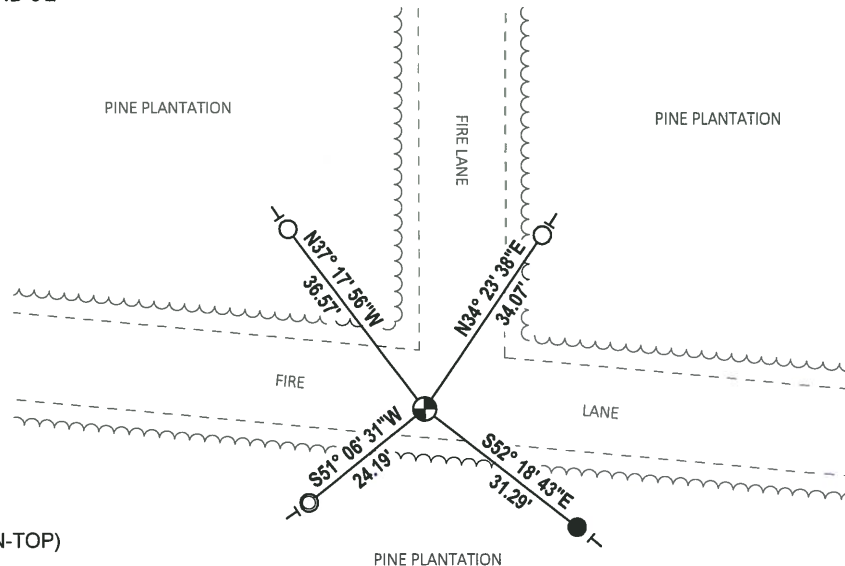
DATA SHOWN HERE ON THIS TIE SHEET IS CORRECT AND COMPLETE TO THE BEST OF MY KNOWLEDGE AND BELIEF.

PROFESSIONAL LAND SURVEYOR

DATE 7-18-18

### - TIE SKETCH

NOTE: THE CORNER FALLS 2'± SOUTH OF THE CENTERLINE OF EAST-WEST FIRE LANE AND 6'± WEST OF THE CENTERLINE OF THE NORTH-SOUTH FIRE LANE..



- SET 3/4" x 18" IRON REBAR, 1.50#/FT
- FOUND 3/4" IRON ROD
- FOUND 1-1/4" O.D. IRON PIPE
- ⊕ FOUND HARRISON MONUMENT (BROKEN-TOP)
- ┊ VINYL "T" POST
- ⊗ WITNESS TREE

# Government Land Corner Certificate

ADAMS County

TYPE OF MONUMENT: HARRISON

STATE PLANE COORDINATES: N \_\_\_\_\_  
E \_\_\_\_\_

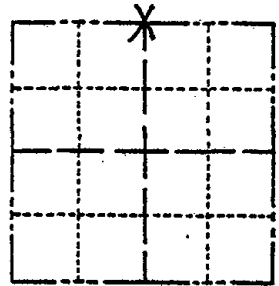
ELEVATION — M.S.L. DATUM: \_\_\_\_\_

THETA ANGLE: \_\_\_\_\_

FIELD BOOK: LL PAGE \_\_\_\_\_

DRAWN BY: R. Nuber

CORNER NO. 102  
SECTION 31  
TOWN 20  
RANGE 6



LOCATION  
(Indicated by 'X')

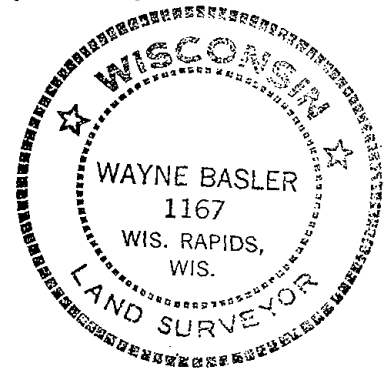
## BASIS FOR MONUMENT LOCATION

Show info such as: History of corner, with reference to Vol. and pg., dates, surveyor; exact description of monument replaced; if location computed, by taped or EDM traverse; landowner remarks, etc. (Use reverse side if necessary)

Searched for and found 1 1/2" x 36" iron pipe with cross bars near the bottom. Accepted said pipe and replaced with HARRISON MON.

- OK 5-7-84 RK-SS
- OK 1-18-89 SS
- OK 3-3-94 CR-JG
- OK 12-28-98 JG
- OK 3-17-04-JG
- OK 2-2-09 SS

SEAL:



DATA SHOWN HERE ON  
CERTIFIED CORRECT:

Wayne Basler  
Registered Land Surveyor

DATE: 6-15-81

## TIE SKETCH

Show at least four ties, also fence lines, roads, topo, size and type of witness trees and if off road - best way to arrive at corner.

