

30
SECTION

20
TOWN

06
RANGE

ADAMS COUNTY

COUNTY CORNER NO: 103

ROMPORTOL ID: 42006300000

PUBLIC LAND SURVEY MONUMENT RECORD

TYPE OF MONUMENT: HARRISON
ADAMS COUNTY COORDINATES, NAD 83 (2007)

N. 292852.298

E. 530710.661

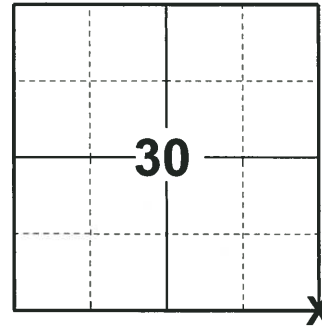
ELEVATION- - - - - DATUM - - - - -

FIELD WORK DATE: 05/29/2018

BASIS FOR MONUMENT LOCATION

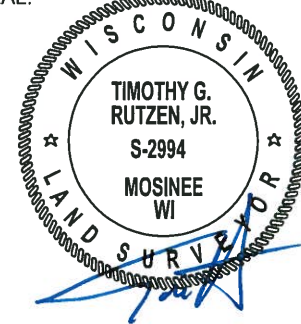
1976 - PLS 1103 RAN E.D.M./TRANSIT TRAVERSE AROUND SECTIONS 29 AND 32 TO DETERMINE SEARCH AREAS. EXCAVATION YIELDED NO EVIDENCE OF THE ORIGINAL OR SUBSEQUENT REMONUMENTATION OF RECORD, ALTHOUGH A 1-1/4" IRON PIPE WAS FOUND. THIS CORNER FIT THE ADJACENT SECTIONS QUITE WELL, WAS ACCEPTED AND REMONUMENTED WITH A HARRISON MONUMENT AND TIED OUT.

2018 - PLS 2994 FOUND A HARRISON MONUMENT 10" BELOW THE SURFACE AND 2 WITNESS TREES. THE MONUMENT AGREES WITH THE EXISTING WITNESS TREES. ACCEPTED THE HARRISON MONUMENT AS THE CORNER LOCATION. SET 4 NEW TIES AND MEASURED TO THE TIES AND WITNESS TREES.



LOCATION
(INDICATE CORNER BY "X")

SEAL:



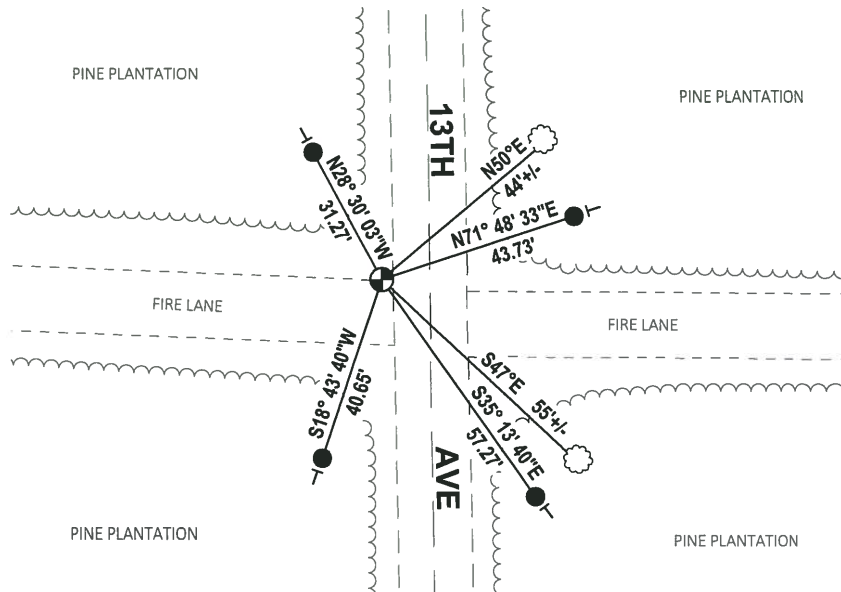
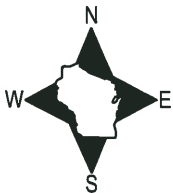
DATA SHOWN HERE ON THIS TIE SHEET IS CORRECT AND COMPLETE TO THE BEST OF MY KNOWLEDGE AND BELIEF.

PROFESSIONAL LAND SURVEYOR

DATE 7-18-18

TIE SKETCH

NOTE: THE CORNER FALLS 10'± WEST OF THE CENTERLINE OF 13TH AVE.



- SET 3/4" x 18" IRON REBAR, 1.50#/FT
- ⊕ FOUND HARRISON MONUMENT
- ┌ VINYL "T" POST
- ☁ WITNESS TREE

ADAMS COUNTY

Survey Monument Record

TYPE OF MONUMENT: Harrison

STATE PLANE COORDINATES: N _____

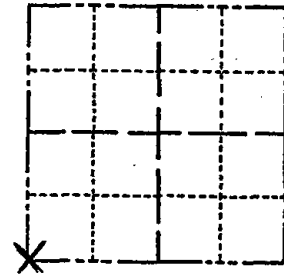
E _____

ELEVATION — M.S.L. DATUM: _____

THETA ANGLE: _____

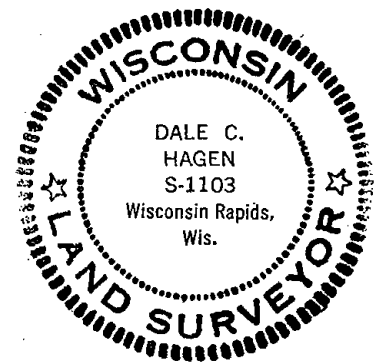
FIELD BOOK: _____ PAGE _____

CORNER NO. 979 ¹⁰³
 SECTION 29
 TOWN 20
 RANGE 6E



LOCATION
(Indicated by 'X')

SEAL:



BASIS FOR MONUMENT LOCATION

(Use reverse side if necessary)

Show info such as: History of corner, with reference to Vol. and pg, dates, surveyor; exact description of monument replaced; if location computed, by taped or EDM traverse; landowner remarks, etc.

Ran EDM/transit traverse around Sections 29 and 32 to determine search areas.

Excavation yielded no evidence of the original or subsequent remonumentations of record, though a 1-1/2" iron pipe was found. This corner fit the adjacent sections quite well, and was remonumented with a Harrison Monument.

Set 4-15-1976.

CERTIFIED CORRECT:

Dale C. Hagen
 Registered Land Surveyor

DATE: 6-1-1976

OK - 7-13-79 RN-RW
 " 5-7-84 DK-SS
 2 NEW TIES 3 MARCH 94 CR-JG
 3-GONE, 3-NEW, 12-28-98-JG

TIE SKETCH 1-GONE 1-19-04-JG
 1 NEW TIE 4-14-09 SS
 (Show at least four ties)

NOTE:
 Ties in trees to nail in disc.

