

29
SECTION

26
TOWN

06
RANGE

ADAMS COUNTY

COUNTY CORNER NO.: 105

ROMPORTOL ID: 42606290000

PUBLIC LAND SURVEY MONUMENT RECORD

TYPE OF MONUMENT: HARRISON
ADAMS COUNTY COORDINATES, NAD 83 (2007)

N. 292873.087

E. 536005.750

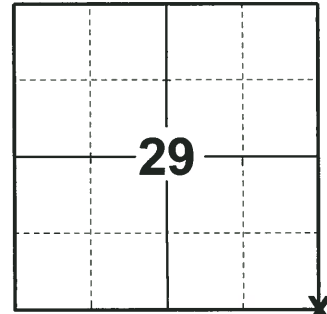
ELEVATION- DATUM

FIELD WORK DATE: 05/29/2018

BASIS FOR MONUMENT LOCATION

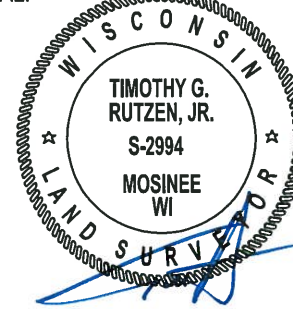
1974 - PLS 1103 FOUND NO EVIDENCE OF THE CORNER LOCATION IN THE FIELD. RAN E.D.M. TRAVERSE OF SECTION 28 AND RE-ESTABLISHED THE CORNER USING ORIGINAL NOTES. SET HARRISON AND TIED OUT.

2018 - PLS 2994 FOUND A HARRISON MONUMENT FLUSH WITH THE GROUND SURFACE AND 2 TIES. THE MONUMENT AGREES WITH THE EXISTING TIES. ACCEPTED THE HARRISON MONUMENT AS THE CORNER LOCATION. SET 2 NEW TIES AND MEASURED TO THE TIES.



LOCATION
(INDICATE CORNER BY "X")

SEAL:

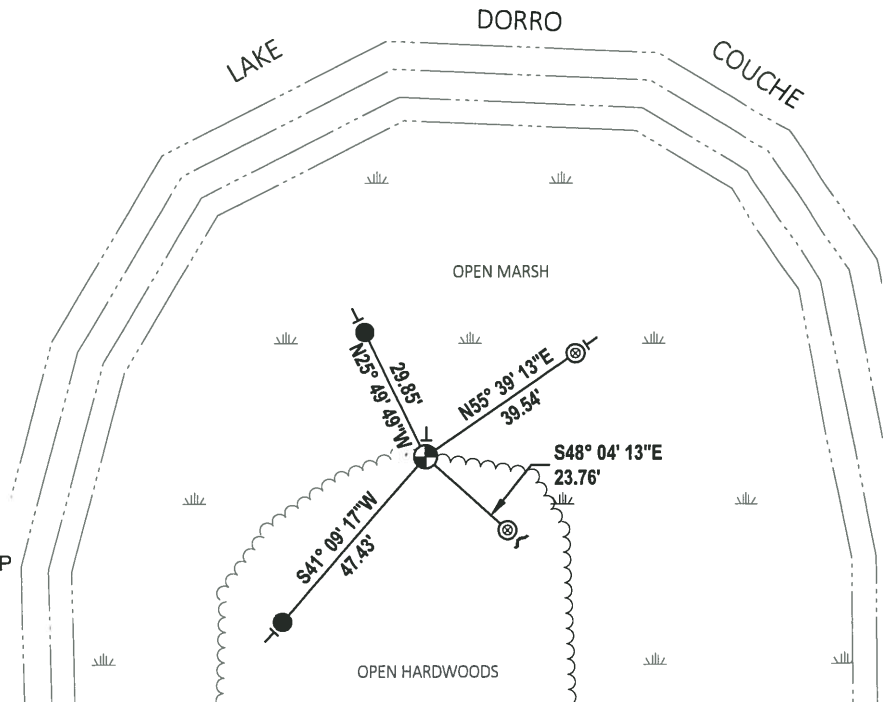


DATA SHOWN HERE ON THIS TIE SHEET IS CORRECT AND COMPLETE TO THE BEST OF MY KNOWLEDGE AND BELIEF.

PROFESSIONAL LAND SURVEYOR

DATE 7-18-18

- TIE SKETCH



- SET 3/4" x 18" IRON REBAR, 1.50#/FT
- ⊙ FOUND 1-1/2" O.D. IRON PIPE W/ALUMINUM CAP
- ⊕ FOUND HARRISON MONUMENT
- ┌ STEEL FENCE POST
- └ VINYL "T" POST

ADAMS COUNTY

Survey Monument Record

TYPE OF MONUMENT: Standard Harrison

STATE PLANE COORDINATES: N _____

E _____

ELEVATION — M.S.L. DATUM: _____

THETA ANGLE: _____

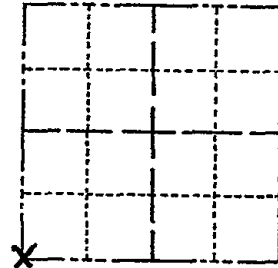
FIELD BOOK: 111 PAGE 13

CORNER NO. 379 ⁽¹⁰⁵⁾

SECTION 28

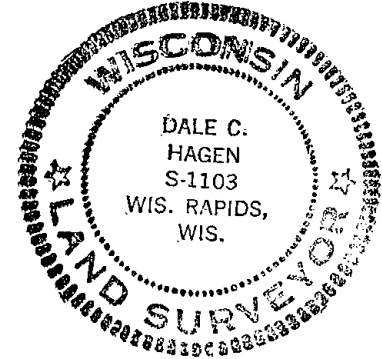
TOWN 20

RANGE 6 E



LOCATION
(Indicated by 'X')

SEAL:



BASIS FOR MONUMENT LOCATION

(Use reverse side if necessary)

Show info such as: History of corner, with reference to Vol. and pg, dates, surveyor; exact description of monument replaced; if location computed, by taped or EDM traverse; landowner remarks, etc.

No evidence as to the location of the corner is evident in the field. Ran EDM traverse of Section 28 and re-established corner using original notes.

- O.K. 1-3-79
- " 5-7-84 OK-SS
- " 5-8-89 SS
- OK 3-14-94 SS
- OK 12-29-98-JG

CERTIFIED CORRECT:

Dale C. Hagen
Registered Land Surveyor

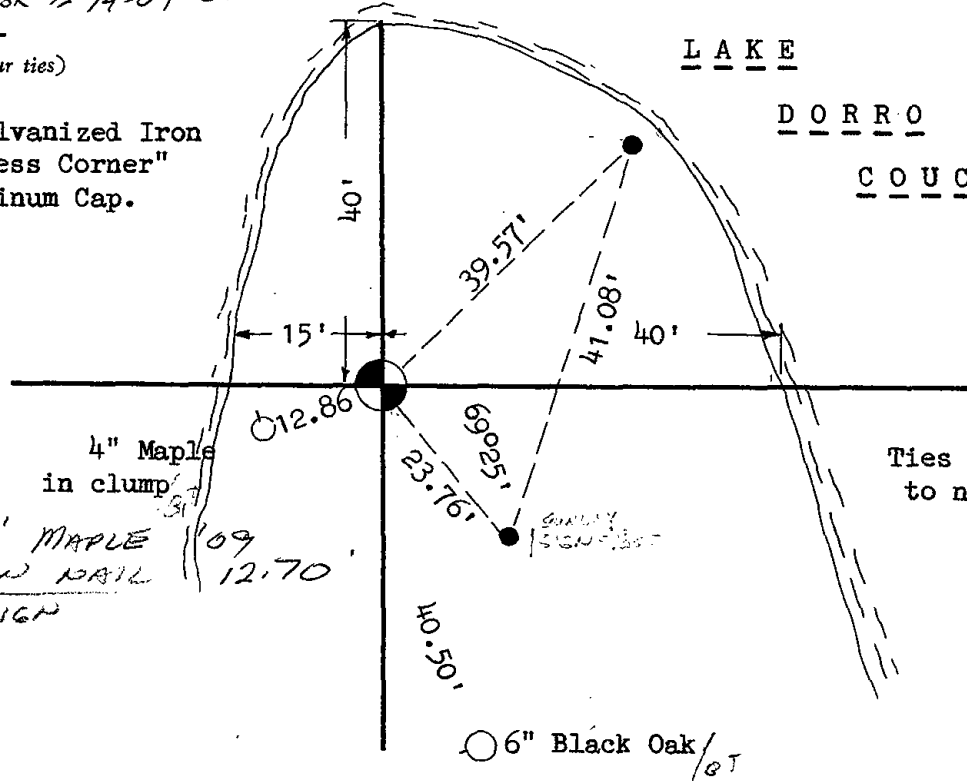
DATE: May 2, 1974

TIE SKETCH

OK 12-14-09 SS

(Show at least four ties)

- - 50" x 1 1/2" Galvanized Iron Pipe with "Witness Corner" stamped in Aluminum Cap.



L A K E

D O R R O

C O U C H E

Ties in trees taken to nail and disc.