

## PUBLIC LAND SURVEY MONUMENT RECORD

TYPE OF MONUMENT: CALCULATED POSITION  
 ADAMS COUNTY COORDINATES, NAD 83 (2007)

N. 292890.814

E. 538646.181

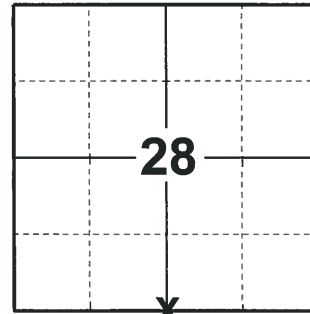
ELEVATION-          DATUM         

FIELD WORK DATE: 05/29/2018

### BASIS FOR MONUMENT LOCATION

1974 - PLS 1103 NO EVIDENCE AS TO THE LOCATION OF THE CORNER IS APPARENT IN THE FIELD BECAUSE THE CORNER FALLS WITHIN A LARGE SWAMP. RAN EDM TRAVERSE OF SECTION 28 AND RE-ESTABLISHED CORNER USING ORIGINAL NOTES. SET TIES ONLY.

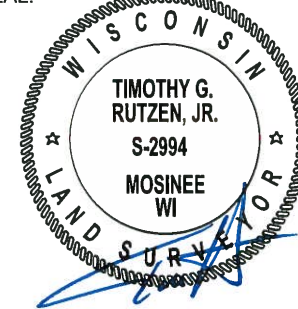
2018 - PLS 2994 FOUND 2 TIES ON LINE AND 2 EXISTING WITNESS TREES, BOTH SUPPORTING THE TIES. ACCEPTED THE TIES AS CORRECT. CALCULATED THE CORNER LOCATION BY EXTENDING THE LINE BETWEEN THE 2 FOUND TIES, SOUTH INTO THE DORRO COUCHE SWAMP A DISTANCE OF 500', AS SHOWN ON PRIOR TIESHEET. SET 2 NEW WITNESS TREES PER TIE AND MEASURED TO THE TIES AND WITNESS TREES.



LOCATION

(INDICATE CORNER BY "X")

SEAL:



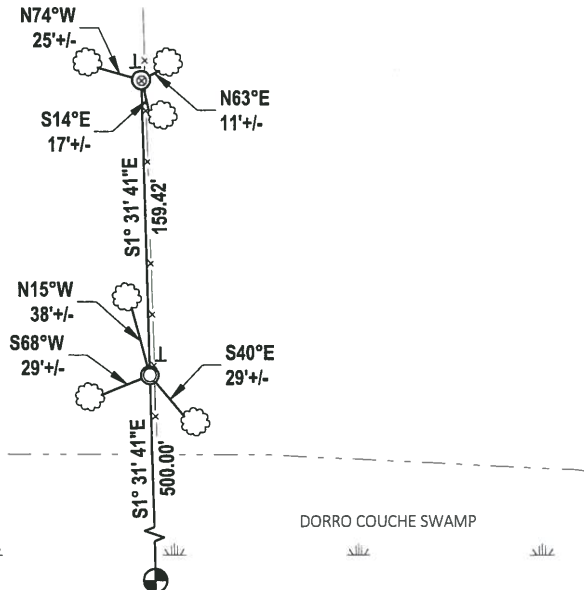
DATA SHOWN HERE ON THIS TIE SHEET IS CORRECT AND COMPLETE TO THE BEST OF MY KNOWLEDGE AND BELIEF.

PROFESSIONAL LAND SURVEYOR

DATE 7-18-18

### TIE SKETCH

NOTE: ALL TIES ARE TO NAILS IN TREES.



- ⊙ FOUND 1-1/2" O.D. IRON PIPE W/ALUMINUM CAP
- FOUND 1-1/4" O.D. IRON PIPE
- ⊙ CALCULATED POSITION OF CORNER
- ├ VINYL "T" POST
- ☁ WITNESS TREE

**ADAMS COUNTY**

**Survey Monument Record**

TYPE OF MONUMENT: Ties Only

STATE PLANE COORDINATES: N \_\_\_\_\_  
E \_\_\_\_\_

ELEVATION — M.S.L. DATUM: \_\_\_\_\_

THETA ANGLE: \_\_\_\_\_

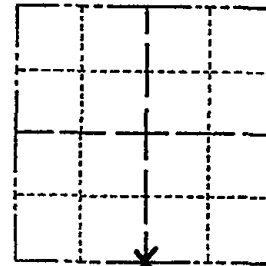
FIELD BOOK: 111 PAGE 13

CORNER NO. 381 106

SECTION 28

TOWN 20

RANGE 6 E



LOCATION  
(Indicated by 'X')



SEAL:

**BASIS FOR MONUMENT LOCATION**

(Use reverse side if necessary)

Show info such as: History of corner, with reference to Vol. and pg, dates, surveyor; exact description of monument replaced; if location computed, by taped or EDM traverse; landowner remarks, etc.

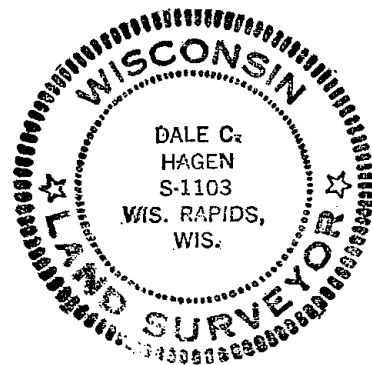
No evidence as to location of the corner is apparent in the field because corner falls within large swamp.  
Ran EDM traverse of Section 28 and re-established corner using original notes.

OK-5-8-89 SS

OK 7-13-79 RN-RW

1-CONE, 1-NEW TIE 3-14-94 56-SS

1-NEW TIE, WITNESS CORNERS OK 4-9-97-56-SS  
IP'OK 3 NEW TIES 2-23-09 SS



CERTIFIED CORRECT:

Dale C. Hagen  
Registered Land Surveyor

DATE: May 2, 1974

**TIE SKETCH** 12" Black Oak 24.78' 12" Twin Jack Pine

DND SIGN  
(Show at least four ties) FACES NORTH '94

Ties in trees taken to nail and disc.

DEAD/DND SIGN  
6" x 4" Black Oak with sign 42.60'  
22.40'

NAIL 1" HIGH 28.55'

6" BLK OAK LAKE

FROM SOUTH PIPE  
I N 05° E 32.6'  
6" JACK PINE, NAIL  
EAST SIDE - SLOPE  
TAPE '09

SECTION LINE

DORRO COUCHE

SWAMP

● - 50" by 1-1/2" Galvanized Iron Pipe with "Witness Corner" stamped in Aluminum cap.

NO CORNER SET.