

PUBLIC LAND SURVEY MONUMENT RECORD

TYPE OF MONUMENT: HARRISON
ADAMS COUNTY COORDINATES, NAD 83 (2007)

N. 292962.267

E. 543902.764

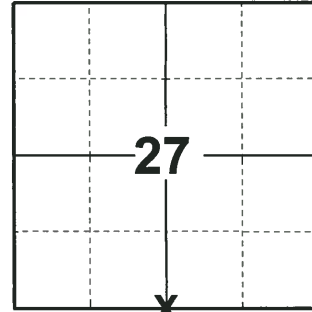
ELEVATION- _____ DATUM _____

FIELD WORK DATE: 05/24/2018

BASIS FOR MONUMENT LOCATION

1981 - PLS 878 FOUND A 2" IRON PIPE SET BY MID-STATE'S SURVEY OF THE SOUTH. REPLACED IRON PIPE WITH HARRISON MONUMENT AND TIED OUT. LOCATION VERIFIED BY EDM TRAVERSE.

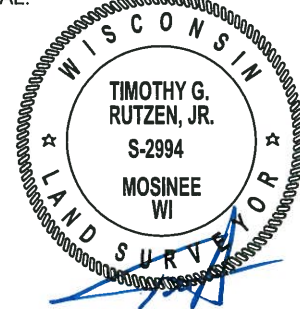
2018 - PLS 2994 FOUND A HARRISON MONUMENT 6" ABOVE GROUND SURFACE. FOUND NO EVIDENCE OF ANY OF THE WITNESSES. ACCEPTED THE HARRISON MONUMENT AS THE BEST EVIDENCE OF THE CORNER LOCATION. SET 4 NEW TIES AND MEASURED TO THE TIES.



LOCATION

(INDICATE CORNER BY "X")

SEAL:

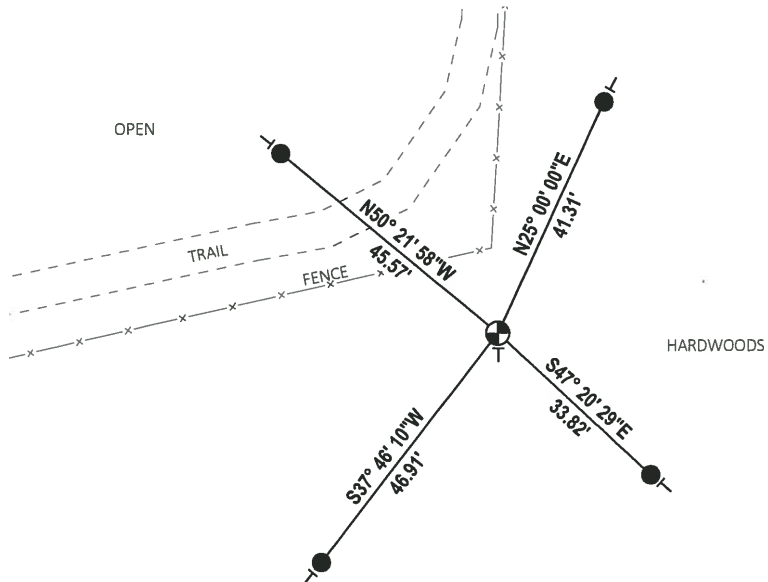


DATA SHOWN HERE ON THIS TIE SHEET IS CORRECT AND COMPLETE TO THE BEST OF MY KNOWLEDGE AND BELIEF.

PROFESSIONAL LAND SURVEYOR

DATE 7-18-18

- TIE SKETCH

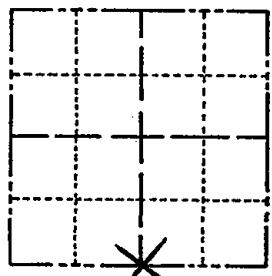


- SET 3/4" x 18" IRON REBAR, 1.50#/FT
- ⊕ FOUND HARRISON MONUMENT
- x— VINYL "T" POST

Government Land Corner Certificate

ADAMS County
 TYPE OF MONUMENT: HARRISON SET 4/20/81
 STATE PLANE COORDINATES: N _____
 E _____
 ELEVATION — M.S.L. DATUM: _____
 THETA ANGLE: _____
 FIELD BOOK: 86 PAGE 135
 DRAWN BY: R. NUBER

CORNER NO. 108
 SECTION 27
 TOWN 20
 RANGE 6



LOCATION
 (Indicated by 'X')

BASIS FOR MONUMENT LOCATION

Show info such as: History of corner, with reference to Vol. and pg., dates, surveyor; exact description of monument replaced; if location computed, by taped or EDM traverse; landowner remarks, etc. (Use reverse side if necessary)

Found 2" iron pipe set by Mid-State's survey of the South. Replaced with Harrison Monument. Location verified by EDM traverse.

SEAL:



DATA SHOWN HERE ON
 CERTIFIED CORRECT:

Anthony B. Kiedrowski
 Registered Land Surveyor

DATE: 2/3/81

TIE SKETCH

Show at least four ties, also fence lines, roads, topo, size and type of witness trees' and if off road - best way to arrive at corner.

CORNER MIDWAY ± ON
 N.W. SLOPE OF HILL

