

PUBLIC LAND SURVEY MONUMENT RECORD

TYPE OF MONUMENT: 1-1/4" IRON ROD
 ADAMS COUNTY COORDINATES, NAD 83 (2007)

N. 293018.731

E. 549176.271

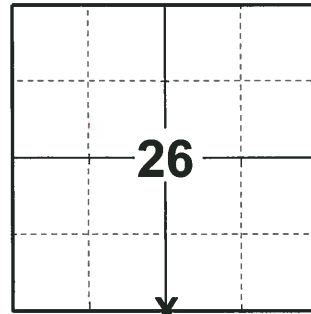
ELEVATION- - - - - DATUM - - - - -

FIELD WORK DATE: 05/23/2018

BASIS FOR MONUMENT LOCATION

1981 - PLS 878 NO POSSESSION LINES EXIST. DID NOT DIG. CALCULATED POSITION ON LINE AND EQUIDISTANT BETWEEN SECTION CORNERS AND SET HARRISON AND TIED OUT. M.C. SMITH SET POST HERE IN 1916, PER 2/32.

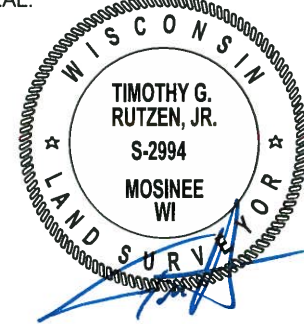
2018 - PLS 2994 FOUND A 1-1/4" IRON ROD 4" BELOW ROAD SURFACE. FOUND NO EVIDENCE OF ANY OF THE WITNESSES OR TIES. THIS POSITION AGREES WITH BEING ON A STRAIGHT LINE AND EQUIDISTANT BETWEEN THE SOUTHWEST AND SOUTHEAST CORNERS OF SECTION 26. ACCEPTED THE 1-1/4" IRON ROD AS THE CORNER LOCATION. SET 4 NEW TIES AND MEASURED TO THE TIES.



LOCATION

(INDICATE CORNER BY "X")

SEAL:



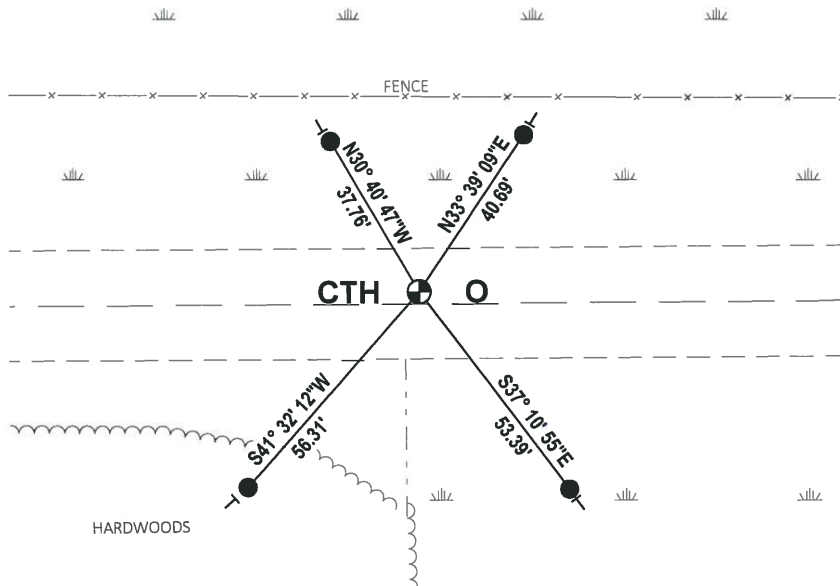
DATA SHOWN HERE ON THIS TIE SHEET IS CORRECT AND COMPLETE TO THE BEST OF MY KNOWLEDGE AND BELIEF.

PROFESSIONAL LAND SURVEYOR

DATE 7-18-18

TIE SKETCH

NOTE: THE CORNER FALLS 3± NORTH OF THE CENTERLINE OF CTH O.

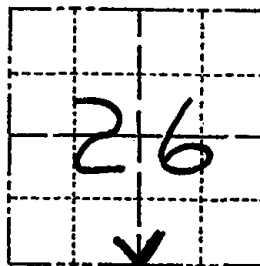


- SET 3/4" x 18" IRON REBAR, 1.50#/FT
- ⊙ FOUND 1-1/4" IRON ROD
- | VINYL "T" POST

Government Land Corner Certificate

Adams County
 TYPE OF MONUMENT: Harrison
 STATE PLANE COORDINATES: N _____
 E _____
 ELEVATION — M.S.L. DATUM: _____
 THETA ANGLE: _____
 FIELD BOOK: 86 PAGE 114
 DRAWN BY: T. H.

CORNER NO. 110
 SECTION 26
 TOWN 20
 RANGE 6



LOCATION
 (Indicated by 'X')

SEAL:



BASIS FOR MONUMENT LOCATION

Show info such as: History of corner, with reference to Vol. and pg., dates, surveyor; exact description of monument replaced; if location computed, by taped or EDM traverse; landowner remarks, etc. (Use reverse side if necessary)

No possession lines.
 Did not dig. Set corner on line and equidistant
 between section corners.
 M.C. Smith set post here in 1916, per 2/32

Ok 7-16-84 MK-DK

DATA SHOWN HERE ON
 CERTIFIED CORRECT:

Anthony B. Kiedrowski
 Registered Land Surveyor

DATE: 1/2/81

TIE SKETCH

Show at least four ties, also fence lines, roads, topo, size and type of witness trees and if off road - best way to arrive at corner.

