

## PUBLIC LAND SURVEY MONUMENT RECORD

TYPE OF MONUMENT: SURVEY NAIL  
ADAMS COUNTY COORDINATES, NAD 83 (2007)

N. 293040.706

E. 554502.053

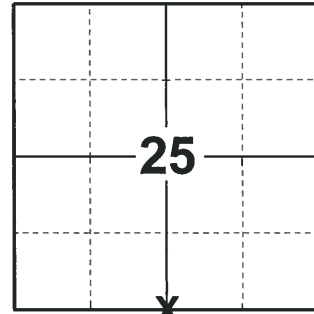
ELEVATION-      DATUM     

FIELD WORK DATE: 05/23/2018

### BASIS FOR MONUMENT LOCATION

1979 - PLS1478 EXCAVATION WITH BACKHOE YIELDED NO EVIDENCE OF ANY PREVIOUS MONUMENT. (ORIGINAL NOR SUBSEQUENT) THE LOCATION OF THE CORNER WAS CALCULATED EQUIDISTANT AND ON LINE BETWEEN ADJACENT SECTION CORNERS. SET HARRISON AND TIED OUT.

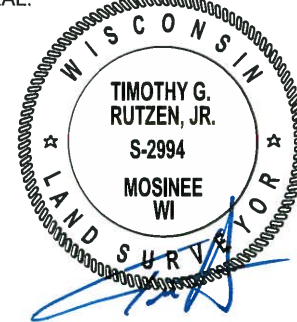
2018 - PLS 2994 FOUND A MAG NAIL IN THE ROAD SURFACE AND 2 TIES. REMOVED THE MAG NAIL AND FOUND NO OTHER EVIDENCE OF ANY MONUMENTATION BELOW. THE MAG NAIL AGREES WITH EXISTING TIES. ACCEPTED THE MAG NAIL LOCATION AND REPLACED IT WITH A SURVEY NAIL. SET 3 NEW TIES AND MEASURED TO THE TIES.



**LOCATION**

(INDICATE CORNER BY "X")

SEAL:



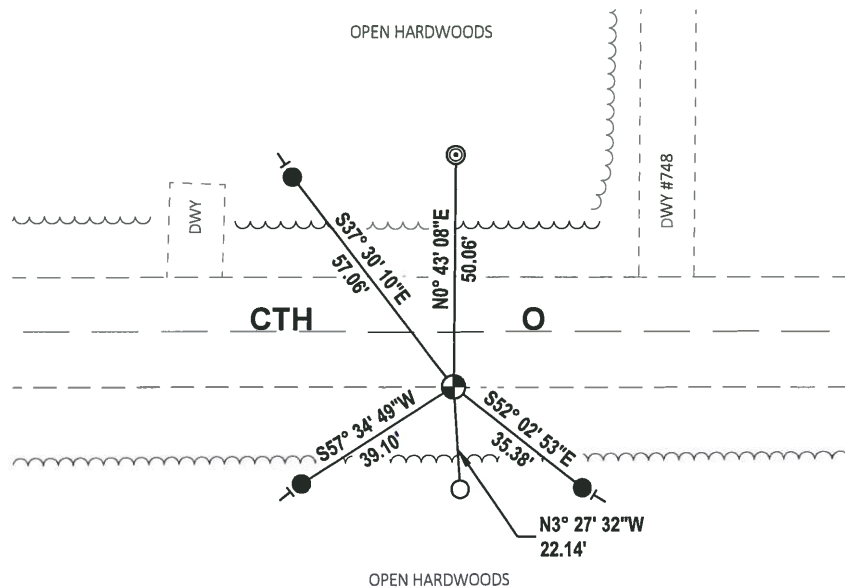
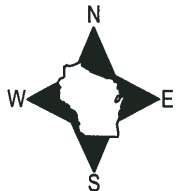
DATA SHOWN HERE ON THIS TIE SHEET IS CORRECT AND COMPLETE TO THE BEST OF MY KNOWLEDGE AND BELIEF.

PROFESSIONAL LAND SURVEYOR

DATE 7-18-18

### - TIE SKETCH

NOTE: THE CORNER FALLS 12'± SOUTH OF THE CENTERLINE OF CTH O.

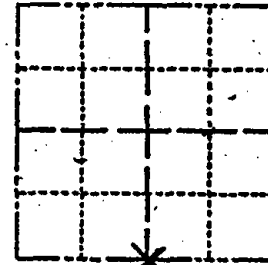


- SET 3/4" x 18" IRON REBAR, 1.50#/FT
- FOUND 3/4" IRON ROD
- ⊙ FOUND 2-3/8" O.D. IRON PIPE
- ⊕ SET SURVEY NAIL
- ⊖ VINYL "T" POST

# Government Land Corner Certificate

Adams County  
 TYPE OF MONUMENT: Harrison  
 STATE PLANE COORDINATES: N \_\_\_\_\_  
 E \_\_\_\_\_  
 ELEVATION — M.S.L. DATUM: \_\_\_\_\_  
 THETA ANGLE: \_\_\_\_\_  
 FIELD BOOK: 54 PAGE 50  
 DRAWN BY: ROGER NUBER

CORNER NO. 112  
 SECTION 25  
 TOWN 20  
 RANGE 6



LOCATION  
(Indicated by 'X')

## BASIS FOR MONUMENT LOCATION

Show info such as: History of corner, with reference to Vol. and pg., dates, surveyor; exact description of monument replaced; if location computed, by taped or EDM traverse; landowner remarks, etc. (Use reverse side if necessary)

Excavation with backhoe yielded no evidence of any previous monumentation. (original nor subsequent)

The location of the corner is equidistant and on line between adjacent section corners.

SEAL:



DATA SHOWN HERE ON CERTIFIED CORRECT:

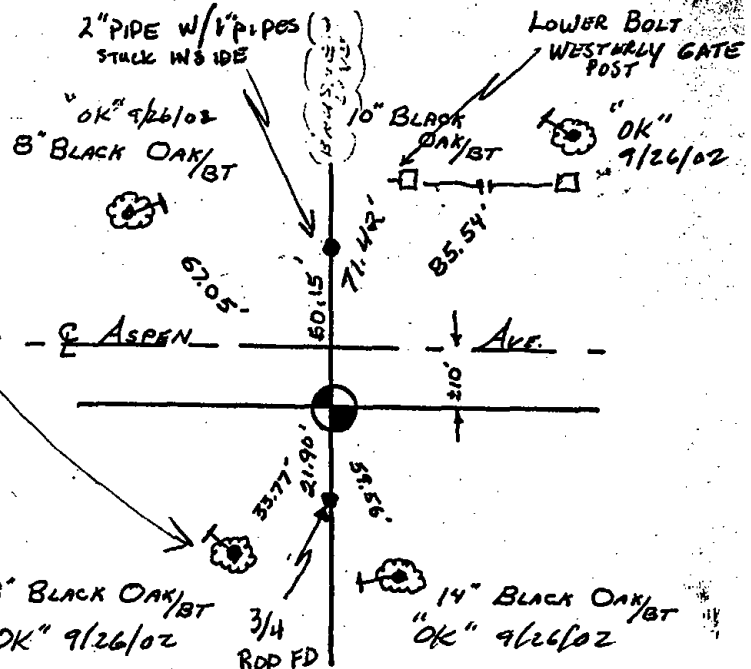
*Gregory P. Rhinehart*  
 Registered Land Surveyor

DATE: 4-19-79

## TIE SKETCH

Show at least four ties, also fence lines, roads, topo, size and type of witness trees and if off road - best way to arrive at corner.

RETIED CORNER  
 REMOVED HARRISON FOR CONSTR.  
 PLACE HAAR. AT 8" BLK OAK TIE  
 9/26/02 - JG



## MAINTENANCE RECORD

Date	Init.	Remarks
2-27-89	SS	OK
3/01/94	CR-SS	OK
2-17-99	JG	TIES OK CHECK FOR SURVEY
2-18-04	JG	TIES OK HARRISON NEEDS TO BE RESET OK 9/26/02
1-07-09	SS	FD MAG NAIL