

# Government Land Corner Certificate

ADAMS County

TYPE OF MONUMENT: HARRISON

STATE PLANE COORDINATES: N \_\_\_\_\_  
E \_\_\_\_\_

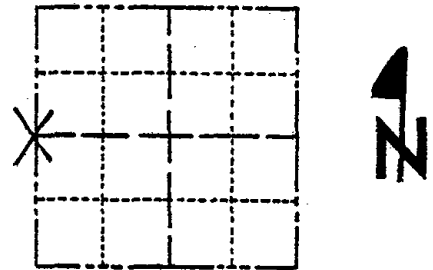
ELEVATION — M.S.L. DATUM: \_\_\_\_\_

THETA ANGLE: \_\_\_\_\_

FIELD BOOK: 66 PAGE \_\_\_\_\_

DRAWN BY: R. Nuber

CORNER NO. 114  
SECTION 31  
TOWN 20  
RANGE 6E



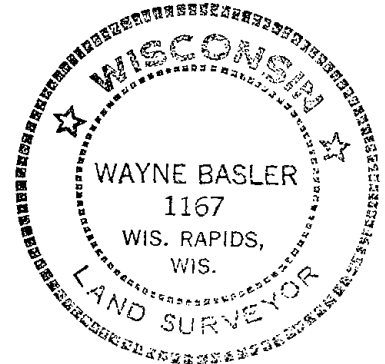
LOCATION  
(Indicated by 'X')

## BASIS FOR MONUMENT LOCATION

Show info such as: History of corner, with reference to Vol. and pg., dates, surveyor; exact description of monument replaced; if location computed, by taped or EDM traverse; landowner remarks, etc. (Use reverse side if necessary)

Searched area for evidence of original corner or for any remonumentation thereof. Search failed to furnish said evidence. E<sup>1/2</sup> Cor. (range line corner) was located midway on a straight line between section corners. Ran EDM Traverse.

SEAL:



Ok 5-7-84 SS- DK

2 NEW TIES 6-12-89 MK-SS  
OK 3 MARCH 94 CR-29

4 NEW TIES 12-28-98 - JG

OK, 1-19-04 - JG

OK 2-13-09 SS

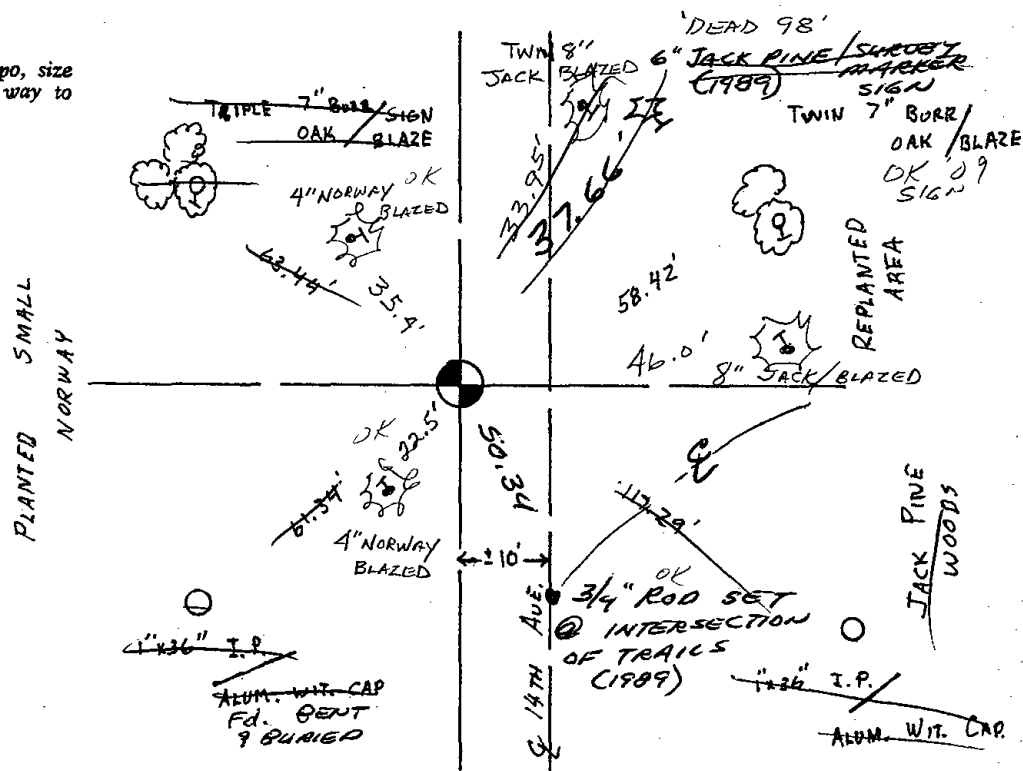
DATA SHOWN HERE ON  
CERTIFIED CORRECT:

Wayne Basler  
Registered Land Surveyor

DATE: 6-15-81

## TIE SKETCH

Show at least four ties, also fence lines, roads, topo, size and type of witness trees and if off road - best way to arrive at corner.



RECEIVED  
6/30/81

