

34
SECTION

20
TOWN

06
RANGE

ADAMS COUNTY

COUNTY CORNER NO.: 118

ROMPORTOL ID: 42006342000

PUBLIC LAND SURVEY MONUMENT RECORD

TYPE OF MONUMENT: HARRISON
ADAMS COUNTY COORDINATES, NAD 83 (2007)

N. 290382.974

E. 546580.627

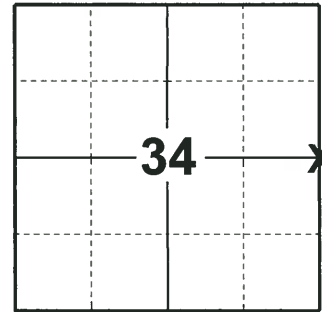
ELEVATION- - - - - DATUM- - - - -

FIELD WORK DATE: 05/30/2018

BASIS FOR MONUMENT LOCATION

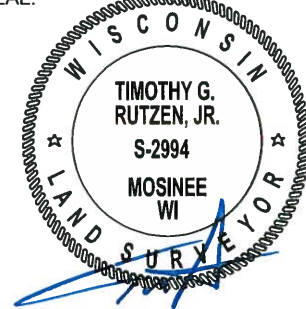
1981 - PLS 878 NO RECORD OF ANY RESURVEYS. FOUND NO EVIDENCE OF THE ORIGINAL OR SUBSEQUENT MONUMENT. CALCULATED THE CORNER ON LINE AND EQUIDISTANT BETWEEN SECTION CORNERS. THE CORNER FALLS SLIGHTLY WEST OF THE LINE RUN BY AL SCHNEIDER OF MID-STATE IN 1967. SET HARRISON AND TIED OUT.

2018 - PLS 2994 FOUND A HARRISON MONUMENT 12" ABOVE THE GROUND SURFACE AND 2 TIES. THE MONUMENT AGREES WITH THE EXISTING TIES. ACCEPTED THE HARRISON MONUMENT AS THE CORNER LOCATION. SET 2 NEW TIES AND MEASURED TO THE TIES.



LOCATION
(INDICATE CORNER BY "X")

SEAL:



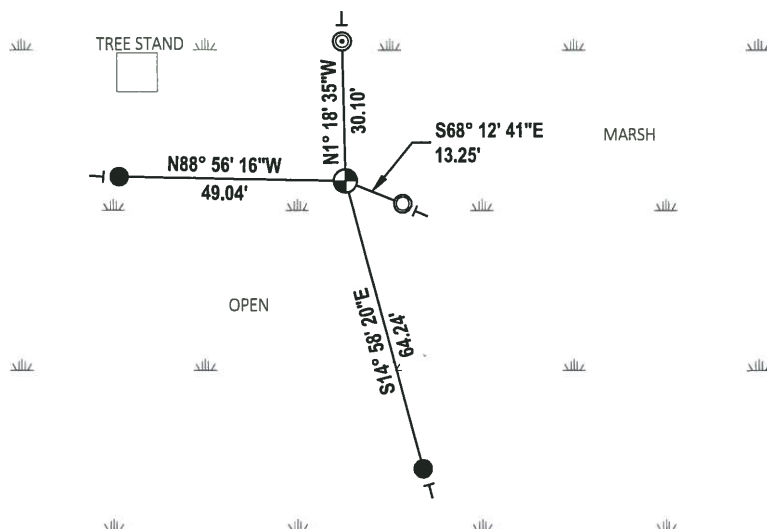
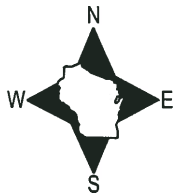
DATA SHOWN HERE ON THIS TIE SHEET IS CORRECT AND COMPLETE TO THE BEST OF MY KNOWLEDGE AND BELIEF.

PROFESSIONAL LAND SURVEYOR

DATE 7-18-18

- TIE SKETCH

NOTE: THE CORNER FALLS 47± SOUTHEAST OF THE SOUTHEAST CORNER OF THE TREE STAND.

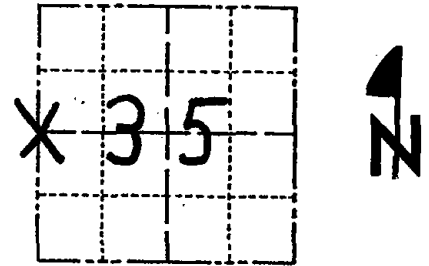


- SET 3/4" x 48" IRON REBAR, 1.50#/FT
- FOUND 1-1/4" O.D. IRON PIPE
- ◎ FOUND 2-3/8" O.D. IRON PIPE
- ⊕ FOUND HARRISON MONUMENT
- VINYL "T" POST

Government Land Corner Certificate

Adams County
 TYPE OF MONUMENT: Harrison
 STATE PLANE COORDINATES: N _____
 E _____
 ELEVATION — M.S.L. DATUM: _____
 THETA ANGLE: _____
 FIELD BOOK: 86 PAGE 118
 DRAWN BY: T. H.

CORNER NO. 118
 SECTION 35
 TOWN 20
 RANGE 6



LOCATION
 (Indicated by 'X')

BASIS FOR MONUMENT LOCATION

Show info such as: History of corner, with reference to Vol. and pg., dates, surveyor; exact description of monument replaced; if location computed, by taped or EDM traverse; landowner remarks, etc. (Use reverse side if necessary)

No record of any resurveys, no evidence of original or subsequent monument. Set corner on line and equidistant between section corners.
 Corner falls slightly west of line run by Al Schneider of Mid-States in 1967.

SEAL:



DATA SHOWN HERE ON
 CERTIFIED CORRECT:

Anthony B. Kiedrowski
 Registered Land Surveyor

DATE: 1/2/81

TIE SKETCH

Show at least four ties, also fence lines, roads, topo, size and type of witness trees and if off road - best way to arrive at corner.

○ = 2" I.P. Found

⊕ = 1" x 24" I.P. & witness
 Cap Set

**DND SIGN ON POST
 NEXT TO MON.**

