

## PUBLIC LAND SURVEY MONUMENT RECORD

TYPE OF MONUMENT: HARRISON (BROKEN-TOP)  
 ADAMS COUNTY COORDINATES, NAD 83 (2007)

N. 290378.552

E. 551886.472

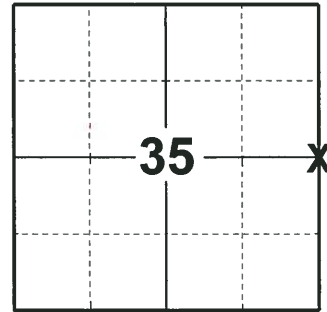
ELEVATION- \_\_\_\_\_ DATUM \_\_\_\_\_

FIELD WORK DATE: 05/30/2018

### BASIS FOR MONUMENT LOCATION

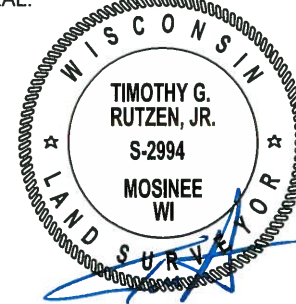
1979 - PLS 1478 CALCULATED A POSITION EQUIDISTANT AND ON LINE BETWEEN ADJACENT SECTION CORNERS. NO EVIDENCE OF ANY PREVIOUS MONUMENTATION WAS FOUND. NO RECORD OF ANY MONUMENTATION SUBSEQUENT TO THE ORIGINAL WAS FOUND. SET HARRISON AND TIED OUT.

2018 - PLS 2994 FOUND A HARRISON MONUMENT WITH A BROKEN-TOP 18" BELOW THE GROUND SURFACE, 1 TIE AND 1 PROPERTY IRON. THE MONUMENT AGREES WITH THE EXISTING TIE. ACCEPTED THE HARRISON MONUMENT WITH A BROKEN-TOP AS THE CORNER LOCATION. SET 2 NEW TIES (USED THE PROPERTY IRON FOR THE 4TH TIE) AND MEASURED TO THE TIES.



LOCATION  
 (INDICATE CORNER BY "X")

SEAL:



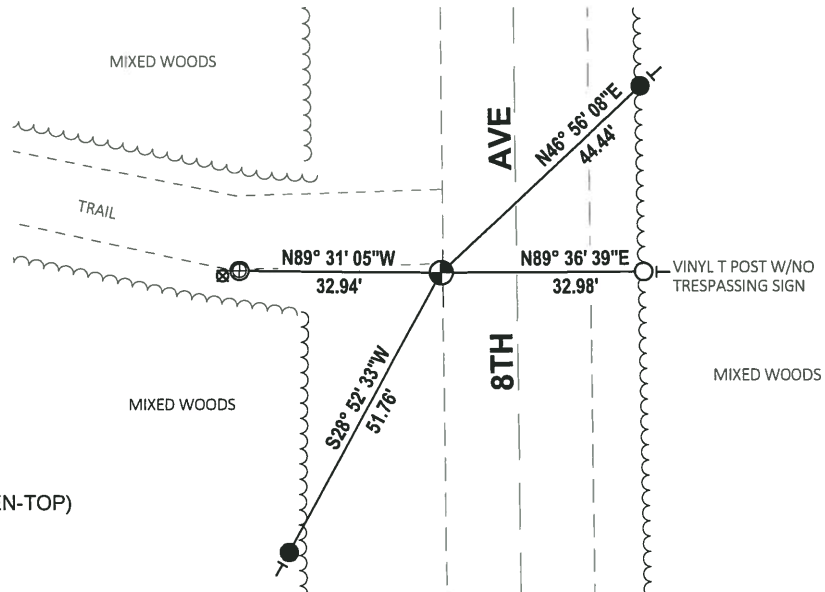
DATA SHOWN HERE ON THIS TIE SHEET IS CORRECT AND COMPLETE TO THE BEST OF MY KNOWLEDGE AND BELIEF.

PROFESSIONAL LAND SURVEYOR

DATE 7-18-18

### TIE SKETCH

NOTE: THE CORNER FALLS 12± WEST OF THE CENTERLINE OF 8TH AVE.

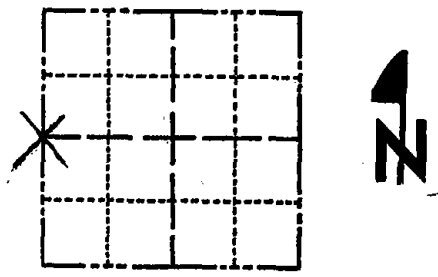


- SET 3/4" x 18" IRON REBAR, 1.50#/FT
- FOUND 3/4" IRON ROD
- ⊕ FOUND 1" O.D. IRON PIPE
- ⊕ FOUND HARRISON MONUMENT (BROKEN-TOP)
- ⊗ 2" YELLOW POST
- VINYL "T" POST

# Government Land Corner Certificate

ADAMS County  
 TYPE OF MONUMENT: Harrison Monument  
 STATE PLANE COORDINATES: N \_\_\_\_\_  
 E \_\_\_\_\_  
 ELEVATION — M.S.L. DATUM: \_\_\_\_\_  
 THETA ANGLE: \_\_\_\_\_  
 FIELD BOOK: 76 PAGE 3  
 DRAWN BY: ROGER NUBER

CORNER NO. 119  
 SECTION 36  
 TOWN 20  
 RANGE 6



LOCATION  
(Indicated by 'X')

## BASIS FOR MONUMENT LOCATION

Show info such as: History of corner, with reference to Vol. and pg., dates, surveyor; exact description of monument replaced; if location computed, by taped or EDM traverse; landowner remarks, etc. (Use reverse side if necessary)

Set equidistant and on line between adjacent section corners.

No evidence of any previous monumentation was found.

No record of any monumentation subsequent to the original was found.

Ok 4-27-84 SS-DK  
 MON. O.K. 3-8-89 GR-SS  
 1- NEW TIE, 2-16-99 - JG-SS  
 2- NEW, TOP BROKEN OFF, MON. IS OVER 1' DEEP, 2-18-04 - JG  
 3-06-09 SS

SEAL:



*Gregory P. Rhinehart*  
 Registered Land Surveyor

DATE: 6/4/79

## TIE SKETCH

Show at least four ties, also fence lines, roads, topo, size and type of witness trees' and if off road - best way to arrive at corner.

