

PUBLIC LAND SURVEY MONUMENT RECORD

TYPE OF MONUMENT: SURVEY NAIL
 ADAMS COUNTY COORDINATES, NAD 83 (2007)

N. 319237.835

E. 525520.718

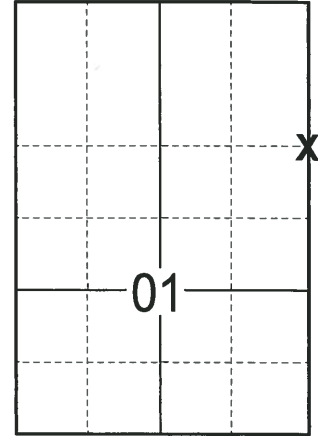
ELEVATION- _____ DATUM _____

FIELD WORK DATE: 02/15/2018

BASIS FOR MONUMENT LOCATION

1977 - PLS 878 EXCAVATED WITH BACKHOE. FOUND NOTHING, NO SURVEYS OF RECORD. CORNER WAS CALCULATED ON A STRAIGHT LINE BETWEEN SECTION CORNERS, BUT NOT IN PROPORTION TO THE ORIGINAL NOTES. WOULD NOT HAVE MATCHED WELL WITH ESTABLISHED POSSESSION LINES BY 30'± IF THE PROPORTIONAL METHOD WAS USED. THEREFORE, THE NORTH-SOUTH LOCATION OF THIS CORNER SET TO MATCH POSSESSION LINES.

2018 - PLS 2994 FOUND MAG NAIL IN ROAD SURFACE AND 3 TIES. REMOVED MAG NAIL AND FOUND NO EVIDENCE OF THE HARRISON BELOW. THE MAG NAIL LOCATION AGREES WITH THE 3 TIES AND DISTANCES SHOWN ON TIE SHEETS FOR THE NE AND E1/4 OF SECTION 1. ACCEPTED THE MAG NAIL LOCATION AND RE-PLACE, WITH A SURVEY NAIL. SET 1 NEW TIE AND MEASURED TO THE TIES.



LOCATION

(INDICATE CORNER BY "X")

SEAL:



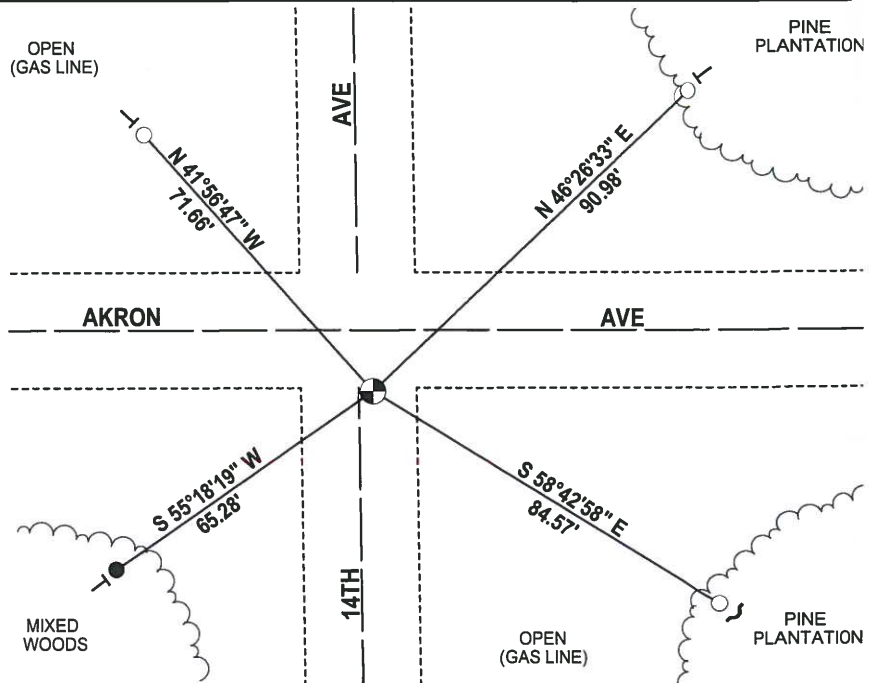
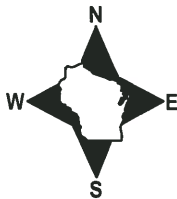
DATA SHOWN HERE ON THIS TIE SHEET IS CORRECT AND COMPLETE TO THE BEST OF MY KNOWLEDGE AND BELIEF.

PROFESSIONAL LAND SURVEYOR

DATE 3-1-18

- TIE SKETCH

NOTE: THE CORNER FALLS 13'± SOUTH OF THE CENTERLINE OF AKRON AVE AND 3'± EAST OF THE CENTERLINE OF 14TH AVE.



- 3/4" x 18" IRON REBAR SET, 1.50#/FT
- 3/4" IRON ROD FOUND
- ⊕ SURVEY NAIL SET
- ↙ STEEL FENCE POST
- └ VINYL "T" POST

ADAMS COUNTY

Survey Monument Record

TYPE OF MONUMENT: Harrison (W160 A +)

STATE PLANE COORDINATES: N _____

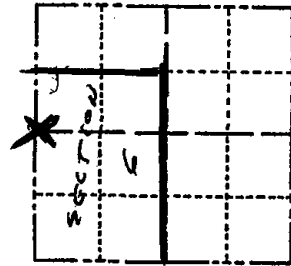
E _____

ELEVATION — M.S.L. DATUM: _____

THETA ANGLE: _____

FIELD BOOK: 54 PAGE 1

CORNER NO. 134
SECTION 6
TOWN 20
RANGE 6



LOCATION (Indicated by 'X')

SEAL:



BASIS FOR MONUMENT LOCATION

(Use reverse side if necessary)

Show info such as: History of corner, with reference to Vol. and pg, dates, surveyor; exact description of monument replaced; if location computed, by taped or EDM traverse; landowner remarks, etc.

Excavated with backhoe. Found nothing. No resurveys of record. Corner set on a straight line between section corners, but not in proportion to original notes. Could not match well established possession lines by 30"± if the proportional method was used. Therefore the north-south location of this corner set to match possession lines.

- Ok 5-27-84 SS-DK
- OK 1-23-87 SS
- OK 2-11-94 SS-CR
- OK 3-23-79 RN-DWI
- 2-NEW TIES 1-21-99- JG-DR
- OK, 2-25-04- JB

CERTIFIED CORRECT:

Anthony B. Kiedrowski
Registered Land Surveyor
DATE: 7/5/77

TIE SKETCH

(Show at least four ties)

9-25-09 VERIFIED FOUND
MAG NAIL - MEAS. SOUTH
FROM NW COR (1" IP) AND
NORTH FROM SW COR.
USING REI SUMMARY
DATED 06-17-81

