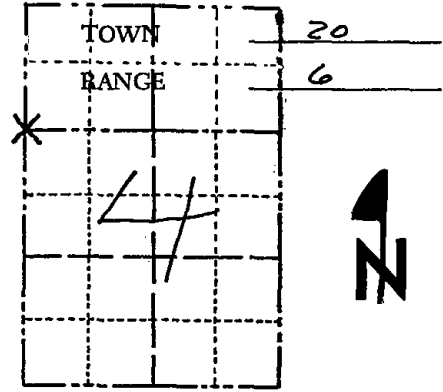


Government Land Corner Certificate

ADAMS County
 TYPE OF MONUMENT: HARRISON MONUMENT
 STATE PLANE COORDINATES: N _____
 E _____
 ELEVATION — M.S.L. DATUM: _____
 THETA ANGLE: _____
 FIELD BOOK: SECT. FILE PAGE _____
 DRAWN BY: G. RHINENART

CORNER NO. 136
 SECTION 4
 TOWN 20
 RANGE 6



LOCATION
(Indicated by 'X')

BASIS FOR MONUMENT LOCATION

Show info such as: History of corner, with reference to Vol. and pg., dates, surveyor; exact description of monument replaced; if location computed, by taped or EDM traverse; landowner remarks, etc. (Use reverse side if necessary)

Excavated with bache. Found sandstone believed set by M.C. Smith in a resurvey of part of Sec. 4. Lowered stone and set Harrison on top. Location verified by EDM/t-2 traverse.

Stone found when doing the survey for Evelyn Salinger.

See the reverse side for updated map 5-11-84

SEAL:



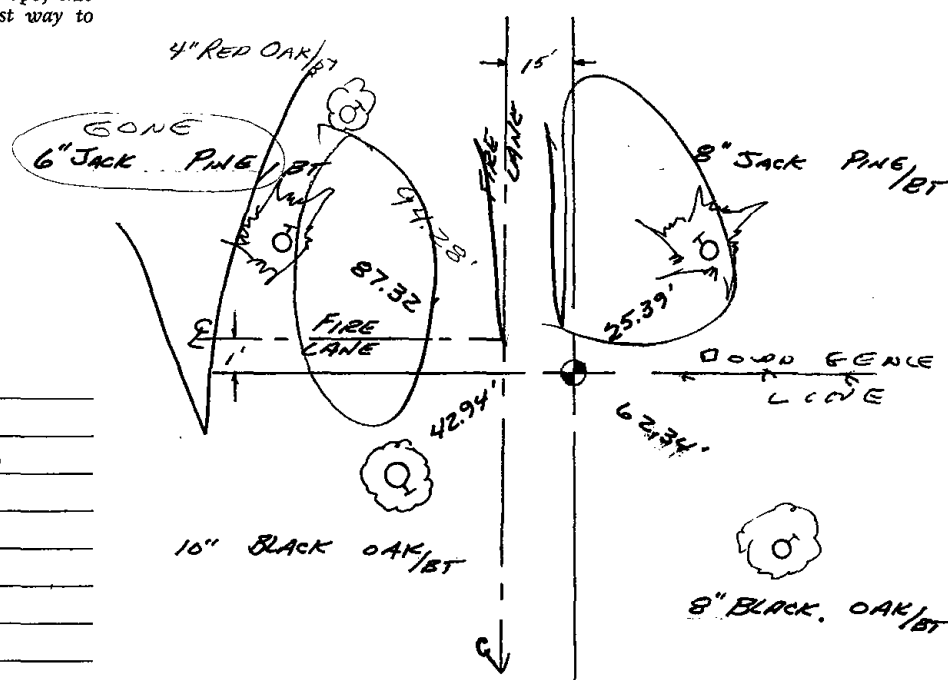
DATA SHOWN HERE ON
CERTIFIED CORRECT:

Anthony B. Kiedrowski
Registered Land Surveyor

DATE: 7/5/77

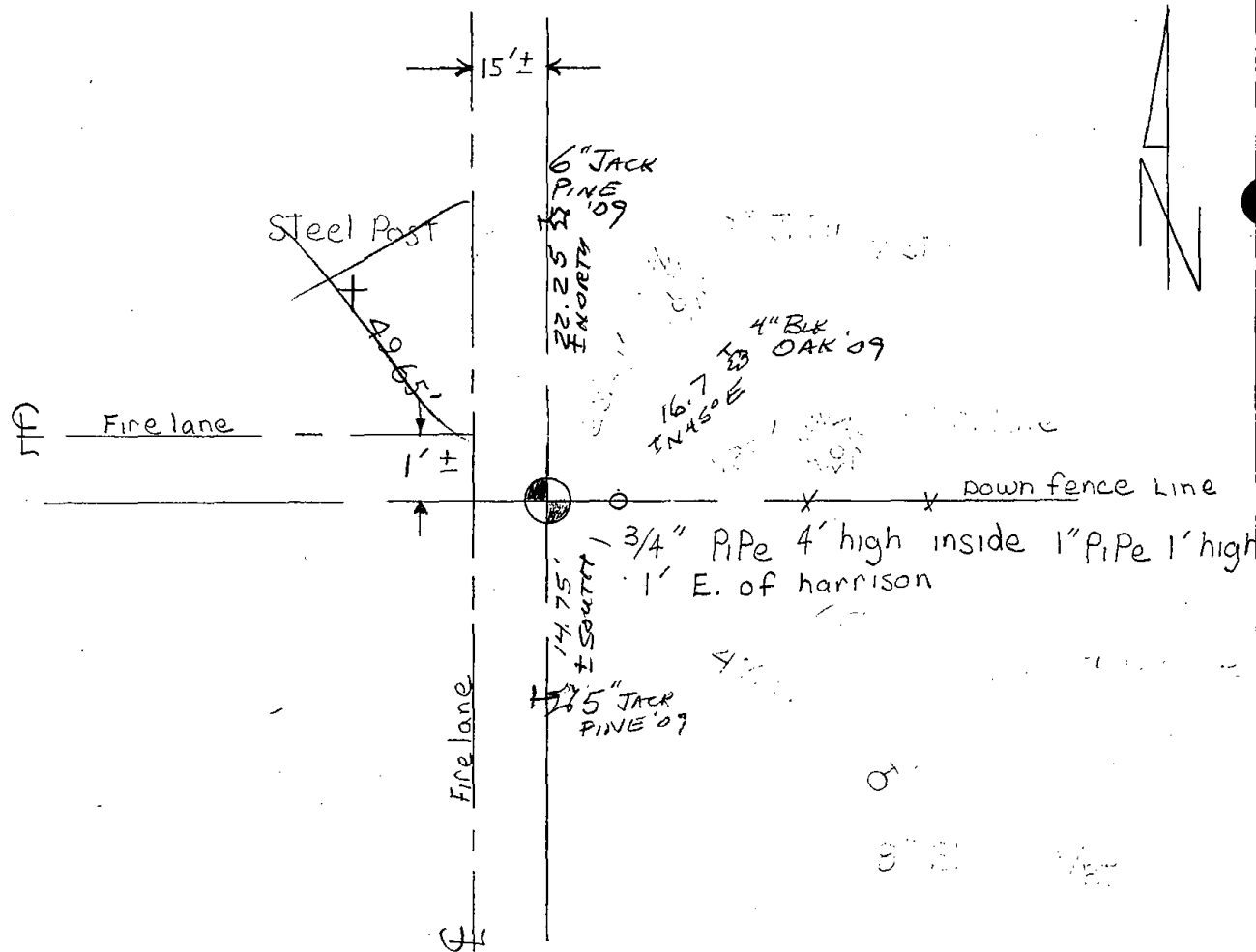
TIE SKETCH

Show at least four ties, also fence lines, roads, topo, size and type of witness trees' and if off road - best way to arrive at corner.



MAINTENANCE RECORD

Date	Init.	Remarks
8-15-79	RN-RK	Mon. O.K. - RETIED



Map was updated on 5-11-84 2 new ties were set SS-DK

OK 3-7-94 JG-GR

2-NEW TIES, MON. OK 3-1-99-JG

3 NEW TIES 3-13-09 SS