

03 SECTION 20 TOWN 07 RANGE

ADAMS COUNTY

COUNTY CORNER NO: 09
 ROMPORTOL ID: 42007039000

PUBLIC LAND SURVEY MONUMENT RECORD

TYPE OF MONUMENT: HARRISON
 ADAMS COUNTY COORDINATES, NAD 83 (2007)

N. 320856.134

E. 577844.517

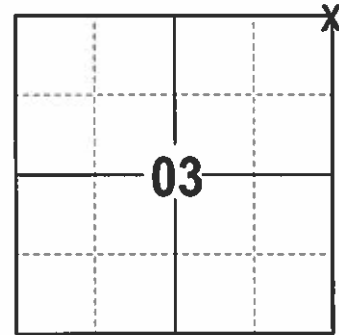
ELEVATION- DATUM

FIELD WORK DATE: 12/29/2016

BASIS FOR MONUMENT LOCATION

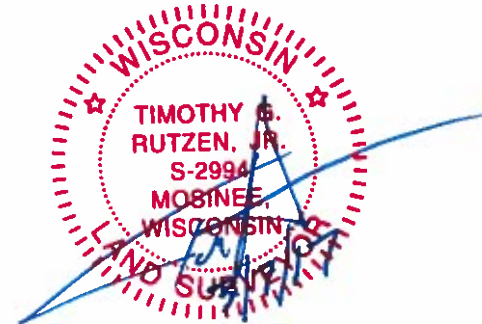
1978 - PLS 878 NO EVIDENCE OF PREVIOUS MONUMENTATION OR RECORDS OF ANY RESURVEYS.
 SET A HARRISON AT RECORD DISTANCE (422.40') WEST OF THE S1/4 CORNER OF 35-21-7 AND ON A LINE BETWEEN THE S1/4 AND SW CORNERS OF SECTION 31, T21N, R7E.

2017 - PLS 2994 FOUND EXISTING HARRISON, AND 1 WITNESS TREE. THE HARRISON AGREES WITH EXISTING WITNESS TREE. ACCEPTED HARRISON AND SET 4 NEW TIES.



LOCATION
 (INDICATE CORNER BY "X")

SEAL:



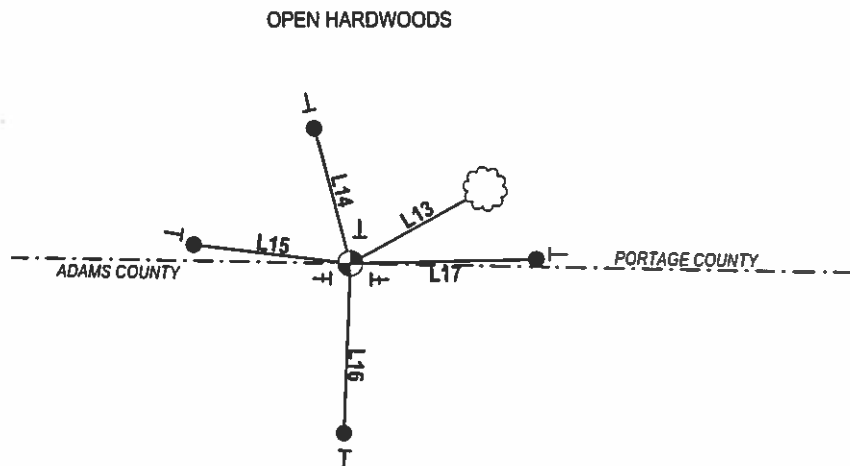
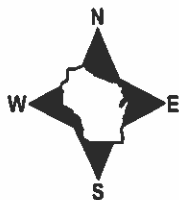
DATA SHOWN HERE ON THIS TIE SHEET IS CORRECT AND COMPLETE TO THE BEST OF MY KNOWLEDGE AND BELIEF.

PROFESSIONAL LAND SURVEYOR

DATE 3/7/17

- TIE SKETCH

NOTE: THERE IS REMNANTS OF FENCE 2 FEET ± NORTH OF THE SECTION LINE



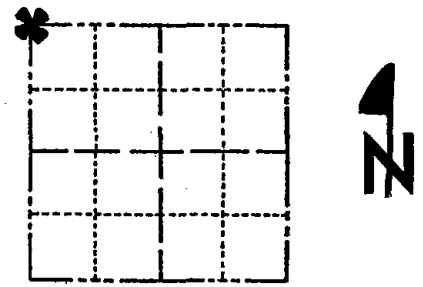
| LINE | BEARING | DISTANCE |
|------|---------------|----------|
| L13 | N 61°29' E | 32.5± |
| L14 | N 14°44'42" W | 31.13' |
| L15 | N 83°05'56" W | 32.98' |
| L16 | S 02°27'10" W | 35.26' |
| L17 | N 88°48'07" E | 38.88' |

- 3/4" X 18" IRON REBAR SET, 1.50#/FT
- ⊕ HARRISON FOUND
- ┊ VINYL "T" POST
- + EXISTING STEEL POST
- ☼ WITNESS TREE FOUND

Government Land Corner Certificate

ADAMS County
 TYPE OF MONUMENT: HARRISON STO.
 STATE PLANE COORDINATES: N _____
 E _____
 ELEVATION — M.S.L. DATUM: _____
 THETA ANGLE: _____
 FIELD BOOK: 60 PAGE 54
 DRAWN BY: SCOTT SORENSEN

CORNER NO. 9
 SECTION 2
 TOWN 20
 RANGE 7



LOCATION
(Indicated by 'X')

BASIS FOR MONUMENT LOCATION

Show info such as: History of corner, with reference to Vol. and pg., dates, surveyor; exact description of monument replaced; if location computed, by taped or EDM traverse; landowner remarks, etc. (Use reverse side if necessary)

Set at record distance (422.40') West of $S\frac{1}{4}$ corner of Section 35-21-7 and on line between $S\frac{1}{4}$ corner of Section 35-21-7 and SW corner of Section 35-21-7.
 No evidence of previous monumentation and records of any resurveys.

Ok 5-2-84 SS-DK

SEAL:



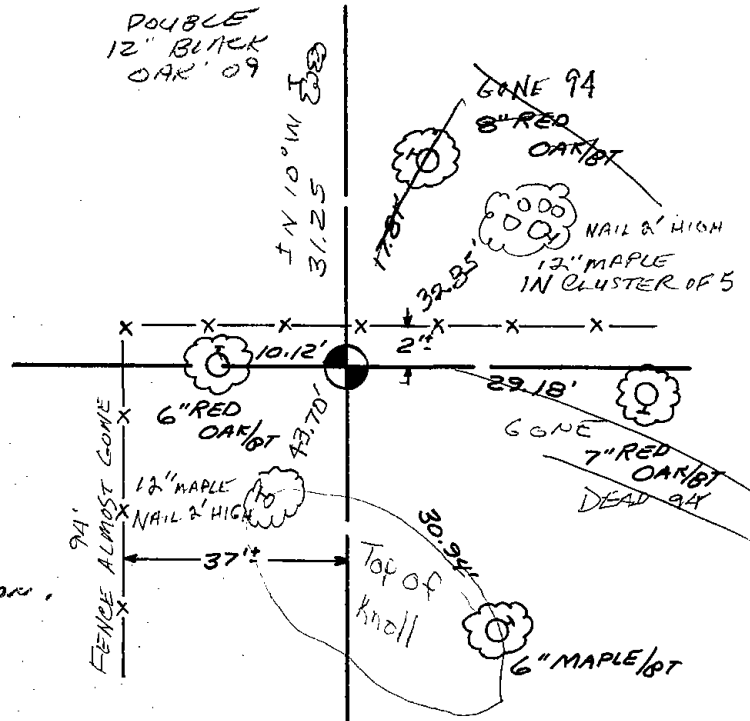
DATA SHOWN HERE ON
CERTIFIED CORRECT:

Anthony B. Kiedrowski
Registered Land Surveyor

DATE: 6/6/78

TIE SKETCH

Show at least four ties, also fence lines, roads, topo, size and type of witness trees' and if off road - best way to arrive at corner.



MAINTENANCE RECORD

| Date | Init. | Remarks |
|---------|-------|---------------------------------|
| 6-14-94 | SG-CR | 1-GONE, 2-NEW TIES |
| 3-22-99 | SG-SF | all here; DND signs on all ties |
| 4-13-09 | SS | 1 NEW - STEEL POST N35 @ Mon. |
| | | |
| | | |

