

01 SECTION 20 TOWN 07 RANGE

ADAMS COUNTY

COUNTY CORNER NO: 12
 ROMPORTOL ID: 42007019020

PUBLIC LAND SURVEY MONUMENT RECORD

TYPE OF MONUMENT: HARRISON
 ADAMS COUNTY COORDINATES, NAD 83 (2007)

N. 320713.637

E. 585735.925

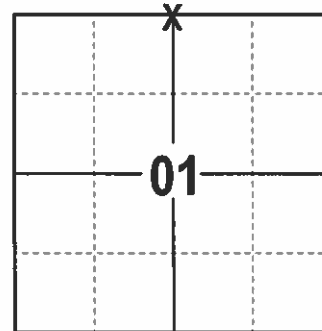
ELEVATION- DATUM

FIELD WORK DATE: 12/28/2016

BASIS FOR MONUMENT LOCATION

1982 - PLS 878 NO EVIDENCE OF THIS CORNER HAVING EVER BEING SET.
 SET HARRISON AT EQUIDISTANT BETWEEN THE NE AND NW CORNER OF SECTION 1, AND ON LINE BETWEEN THE SE AND S1/4 CORNERS OF 36-21-7.

2017 - PLS 2994 FOUND EXISTING HARRISON 12"± BELOW THE SURFACE, FOUND 1 EXISTING WITNESS TREE. HARRISON FIT WELL WITH THE 1 WITNESS TREE. ACCEPTED HARRISON AND SET 4 NEW TIES.



LOCATION
 (INDICATE CORNER BY "X")

SEAL:

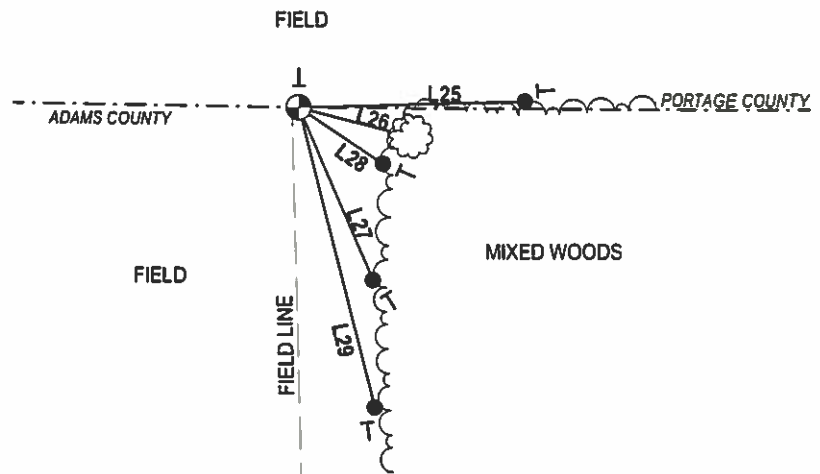
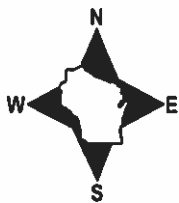


DATA SHOWN HERE ON THIS TIE SHEET IS CORRECT AND COMPLETE TO THE BEST OF MY KNOWLEDGE AND BELIEF.

PROFESSIONAL LAND SURVEYOR

DATE 3/7/17

TIE SKETCH



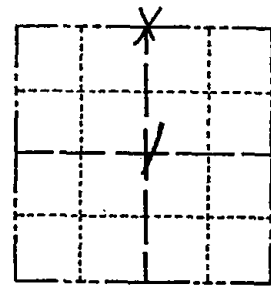
LINE	BEARING	DISTANCE
L25	N 88°32'40" E	47.13'
L26	S 75°13' E	26.0'±
L28	S 56°08'58" E	21.09'
L27	S 23°10'41" E	39.10'
L29	S 14°08'10" E	64.33'

- 3/4" X 18" IRON REBAR SET, 1.50#/FT
- ⊕ HARRISON FOUND
- VINYL "T" POST
- ☁ WITNESS TREE FOUND

Government Land Corner Certificate

ADAMS County
 TYPE OF MONUMENT: HARRISON
 STATE PLANE COORDINATES: N _____
 E _____
 ELEVATION — M.S.L. DATUM: _____
 THETA ANGLE: _____
 FIELD BOOK: 88 PAGE 129
 DRAWN BY: S.J.H.

CORNER NO. 12
 SECTION 1
 TOWN 20
 RANGE 7



LOCATION
(Indicated by 'X')

BASIS FOR MONUMENT LOCATION

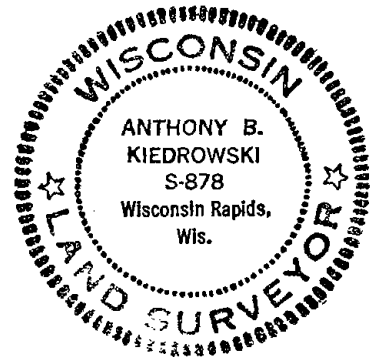
Show info such as: History of corner, with reference to Vol. and pg., dates, surveyor; exact description of monument replaced; if location computed, by taped or EDM traverse; landowner remarks, etc. (Use reverse side if necessary)

No evidence of this corner having ever been set. Set corner equidistant between the NE corner of Section 1 and the NW corner of Section 1, and on line between the SE corner of 36-21-7 and the S $\frac{1}{4}$ corner of 36-21-7.

Ok 5-2-84 SS-DK

2- GONE NOTHING AVAILABLE 3-28-94 JG-GK
 OK 2-22-99-JG
 2 NEW 9-01-04 SS
 3 REMAINING DES 4-13-09 SS

SEAL:



DATA SHOWN HERE ON
CERTIFIED CORRECT:

Anthony B. Kiedrowski
Registered Land Surveyor

DATE: 5-25-82

TIE SKETCH

Show at least four ties, also fence lines, roads, topo, size and type of witness trees and if off road - best way to arrive at corner.

