

01 SECTION 20 TOWN 07 RANGE

ADAMS COUNTY

COUNTY CORNER NO: 13

ROMPORTOL ID: 42007019000

PUBLIC LAND SURVEY MONUMENT RECORD

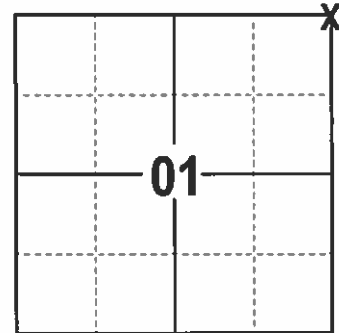
TYPE OF MONUMENT: HARRISON
 ADAMS COUNTY COORDINATES, NAD 83 (2007)

N. 320689.161

E. 588392.182

ELEVATION- DATUM

FIELD WORK DATE: 1/3/2017



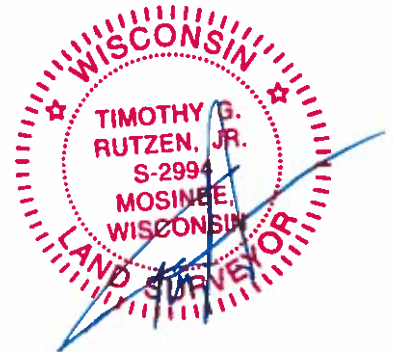
LOCATION
 (INDICATE CORNER BY "X")

BASIS FOR MONUMENT LOCATION

1982 - PLS 878 SEARCHED FOR BEARING TREES AND RESURVEYS OF RECORD AND FOUND NONE. SET A HARRISON ON LINE BETWEEN THE S1/4 OF SECTION 31, T21N, R8E AND THE SE CORNER OF SECTION 31, T21N, R8E AT THE ORIGINAL GOVERNMENT DISTANCE OF 204.6 FEET.

2017 - PLS 2994 FOUND EXISTING HARRISON, 2 EXISTING TIES AND 1 WITNESS TREE. THE HARRISON AGREES WITH EXISTING TIES AND WITNESS TREE. THE HARRISON AGREES WITH THE EXISTING TIES AND WITNESS TREE. ACCEPTED HARRISON AND SET 2 NEW TIES.

SEAL:

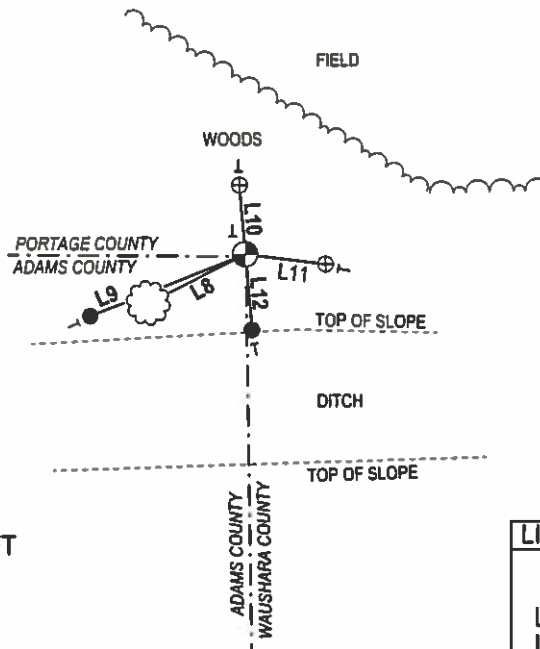
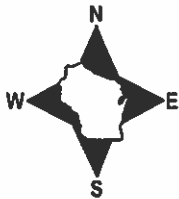


DATA SHOWN HERE ON THIS TIE SHEET IS CORRECT AND COMPLETE TO THE BEST OF MY KNOWLEDGE AND BELIEF.

PROFESSIONAL LAND SURVEYOR

DATE 2/9/17

TIE SKETCH



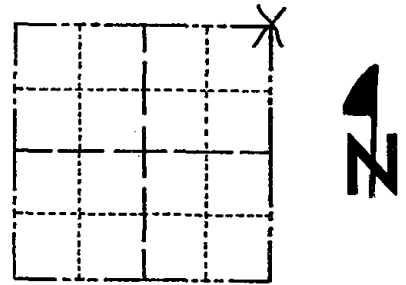
- 3/4" X 18" IRON REBAR SET, 1.50#/FT
- ⊕ 2" OD IRON PIPE FOUND
- ⊗ HARRISON FOUND
- VINYL "T" POST
- ☼ WITNESS TREE FOUND

LINE	BEARING	DISTANCE
L8	S 63°16' W	22.5'±
L9	S 68°32'52" W	34.90'
L10	N 04°42'22" W	14.41'
L11	S 83°04'35" E	16.82'
L12	S 04°51'31" E	15.79'

Government Land Corner Certificate

ADAMS County
 TYPE OF MONUMENT: HARRISON
 STATE PLANE COORDINATES: N _____
 E _____
 ELEVATION — M.S.L. DATUM: _____
 THETA ANGLE: _____
 FIELD BOOK: 88 PAGE 118
 DRAWN BY: S.J.H.

CORNER NO. 13
 SECTION 1
 TOWN 20
 RANGE 7



LOCATION
 (Indicated by 'X')

SEAL:



DATA SHOWN HERE ON
 CERTIFIED CORRECT:

Anthony B. Kiedrowski
 Registered Land Surveyor

DATE: 5-8-82

BASIS FOR MONUMENT LOCATION

Show info such as: History of corner, with reference to Vol. and pg., dates, surveyor; exact description of monument replaced; if location computed, by taped or EDM traverse; landowner remarks, etc. (Use reverse side if necessary)

Set corner on line between the S $\frac{1}{4}$ corner of Section 31-21-8 and the SE corner of Section 31-21-8 at original government distance (204.6'). Searched for bearing trees, none remain. No resurveys of record.

Ok 5-2-84 SS-DK

2-NEW TIES 3-28-94 JG-GR
 3-2-99- JG-SS - OK
 9-01-04 OK-SS
 4-13-09 JK-SS

TIE SKETCH

Show at least four ties, also fence lines, roads, topo, size and type of witness trees and if off road - best way to arrive at corner.

