

06
SECTION

20
TOWN

07
RANGE

ADAMS COUNTY

COUNTY CORNER NO: 15A

ROMPORTOL ID: 42007063000

PUBLIC LAND SURVEY MONUMENT RECORD

TYPE OF MONUMENT: HARRISON
ADAMS COUNTY COORDINATES, NAD 83 (2007)

N. 319523.553

E. 561971.804

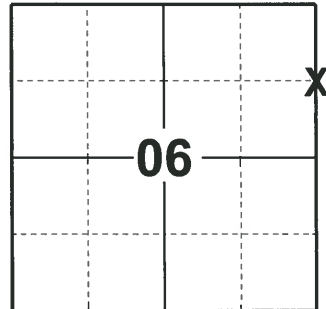
ELEVATION- DATUM

FIELD WORK DATE: 02/12/2020

BASIS FOR MONUMENT LOCATION

1983 - PLS 1444 THIS CORNER WAS SET ON LINE AND BY SINGLE PROPORTIONATE DISTANCE BETWEEN ADJACENT SECTION CORNERS. 10'X10' EXCAVATION NEAR THIS AREA YIELD NOTHING.

2020 - PLS 2675 FOUND HARRISON MONUMENT FLUSH WITH THE GROUND ON TOP OF THE DIRT MOUND. DID NOT RECOVER ANY TIES OR WITNESSES. THE MONUMENT LANDS ON NEAR LINE BETWEEN ADJACENT SECTION CORNERS. ACCEPTED THE HARRISON MONUMENT AS THE BEST EVIDENCE OF THE CORNER LOCATION. SET 4 NEW TIES.



LOCATION

(INDICATE CORNER BY "X")

SEAL:



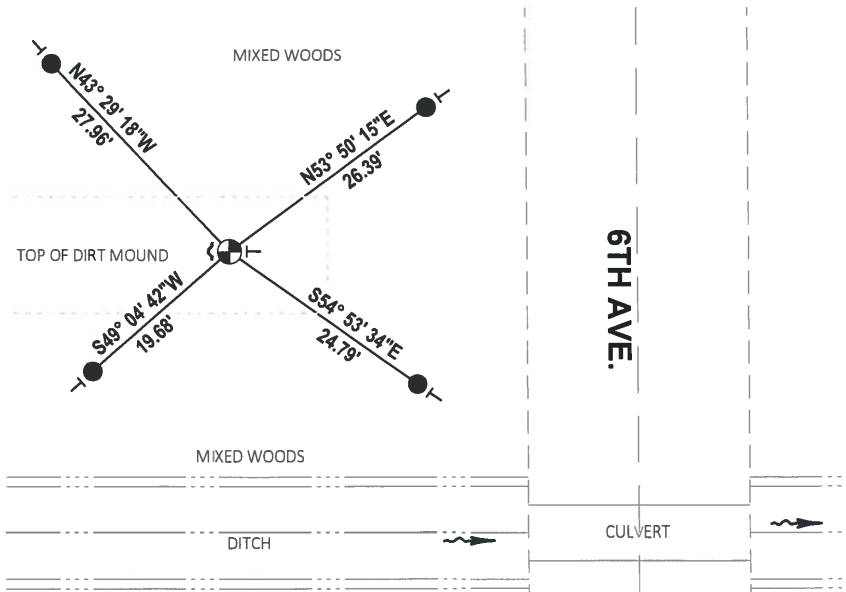
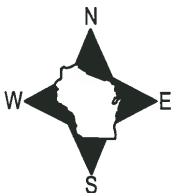
DATA SHOWN HERE ON THIS TIE SHEET IS CORRECT AND COMPLETE TO THE BEST OF MY KNOWLEDGE AND BELIEF.

PROFESSIONAL LAND SURVEYOR

DATE 3/9/2020

- TIE SKETCH

NOTE: THE CORNER LANDS 44± WEST OF CENTERLINE OF 6TH AVE.



- SET 3/4" x 18" IRON REBAR, 1.50#/FT
- ⊕ FOUND HARRISON MONUMENT
- ┘ STEEL FENCE POST
- └ VINYL "T" POST