

05
SECTION

20
TOWN

07
RANGE

ADAMS COUNTY

COUNTY CORNER NO: 16
ROMPORTOL ID: 42007052000

PUBLIC LAND SURVEY MONUMENT RECORD

TYPE OF MONUMENT: HARRISON
ADAMS COUNTY COORDINATES, NAD 83 (2007)

N. 316901.449

E. 567367.680

ELEVATION- - - - DATUM - - - -

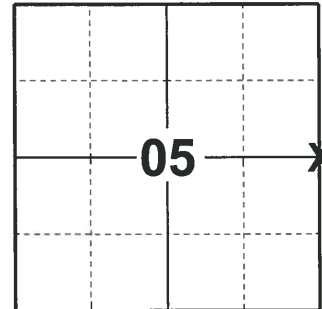
FIELD WORK DATE: 02/11/2020

BASIS FOR MONUMENT LOCATION

1972 - PLS 878 FOUND RAILROAD SPIKE - SET 30" HARRISON MONUMENT ON JUNE 30, 1972.

1973 - PLS 878 LOCATION OF CORNER DETERMINED BY DATA GATHERED FROM A TRAVERSE OF THE S1/2 OF THE SECTION. RAILROAD SPIKE WAS SET BY A.B.K. NOTE: F.B. 106 LOST.

2020 - PLS 2675 FOUND HARRISON MONUMENT 6"± BELOW THE ROAD SURFACE, 2 TIES, AND 1 WITNESS. THE MONUMENT AGREES WITH ALL THE TIES AND WITNESS. ACCEPTED THE HARRISON MONUMENT AS THE CORNER LOCATION. SET 1 TIE AND MEASURED TO A FOUND PROPERTY IRON, EXISTING TIES, AND WITNESS.



LOCATION
(INDICATE CORNER BY "X")

SEAL:



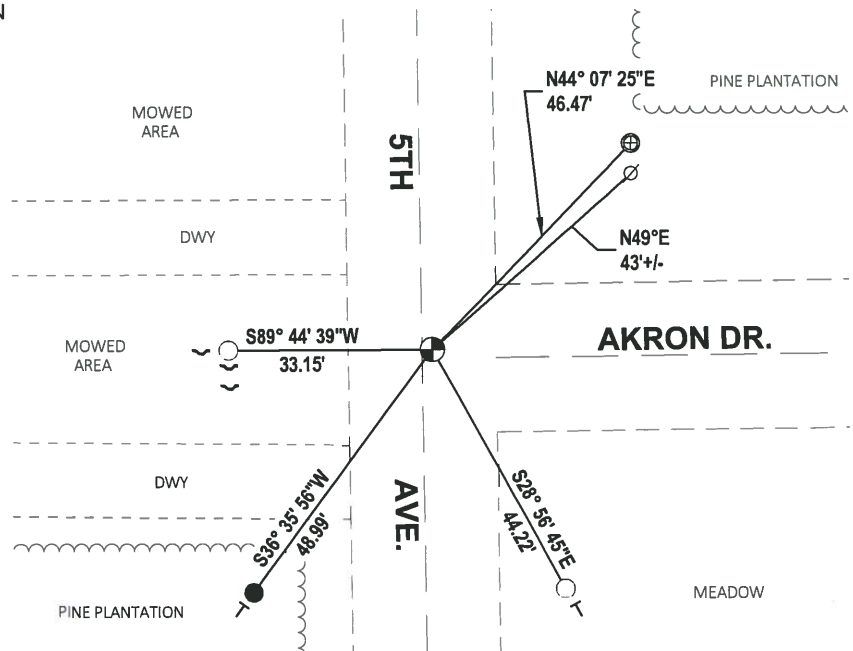
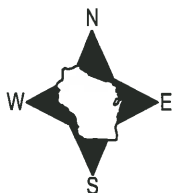
DATA SHOWN HERE ON THIS TIE SHEET IS CORRECT AND COMPLETE TO THE BEST OF MY KNOWLEDGE AND BELIEF.

PROFESSIONAL LAND SURVEYOR

DATE 3/9/2020

- TIE SKETCH

NOTE: THE CORNER LANDS 2'± EAST AND 1.5'± NORTH OF THE INTERSECTION OF 5TH AVE. AND AKRON DR.



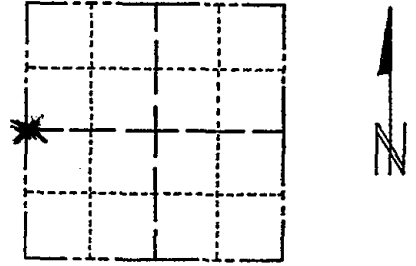
- SET 3/4" x 18" IRON REBAR, 1.50#/FT
- FOUND 3/4" IRON ROD
- ⊕ FOUND 1" O.D. IRON PIPE
- ⊙ FOUND HARRISON MONUMENT
- ⊘ WITNESS POWER POLE
- ┌ STEEL FENCE POST
- └ VINYL "T" POST

ADAMS COUNTY

Survey Monument Record

TYPE OF MONUMENT: 30" HARRISON
 STATE PLANE COORDINATES: N _____
 E _____
 ELEVATION — M.S.L. DATUM: _____
 THETA ANGLE: _____
 FIELD BOOK: 106? PAGE ?

CORNER NO. 146
 SECTION 4
 TOWN 20
 RANGE 7



LOCATION
(Indicated by 'X')

SEAL:

BASIS FOR MONUMENT LOCATION

(Use reverse side if necessary)

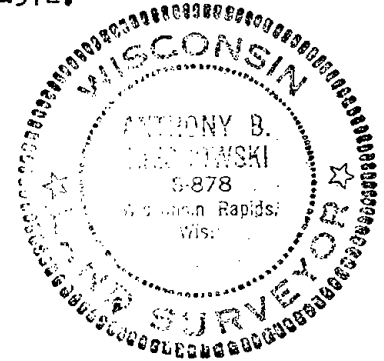
Show info such as: History of corner, with reference to Vol. and pg, dates, surveyor; exact description of monument replaced; if location computed, by taped or EDM traverse; landowner remarks, etc.

Found R.R. spike - set 30" Harrison monument on June 30, 1972.

set by Anthony B. Kiedtowski R.L.S.878*

Location of corner determined by data gathered from a traverse of the S 1/2 of the section. RR spike was set by ABK.

Note: B.B. 106 lost.



TIES & Mon O.K. 3-23-79 R.N.D.W

Ok 4-30-84 SS-DK

OK 3-28-94 JG, GC

1-GONE, 4-LEFT 2-22-99 - JG

3 NEW TIES 12-10-04 - OK 4-19-09 SS

CERTIFIED CORRECT:

Anthony B. Kiedtowski
Registered Land Surveyor

DATE: 1-27-73

TIE SKETCH

(Show at least four ties)

