

PUBLIC LAND SURVEY MONUMENT RECORD

TYPE OF MONUMENT: CALCULATED POSITION
 ADAMS COUNTY COORDINATES, NAD 83 (2007)

N. 314250.990

E. 567416.149

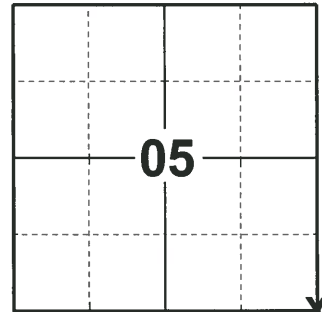
ELEVATION- DATUM

FIELD WORK DATE: 02/11/2020

BASIS FOR MONUMENT LOCATION

1973 - PLS 878 SET REFERENCE TO ACTUAL CORNER ONLY AND DID NOT SET THE CORNER. SET BY ANTHONY B. KIEDROWSKI PLS-878
 LOCATION ESTABLISHED FROM DATA GATHERED FROM A TRAVERSE OF THE S1/2 OF THE SECTION. NOTE. F.B. 106 LOST

2020 - PLS 2675 NO MONUMENT WAS EVER SET FOR THIS CORNER. AFTER ANALYZING THE SOUTH LINE OF SECTION 5, EAST LINE OF SECTION 5, AND THE EAST LINE OF SECTION 8, THE BEST POSITION FITTING THE FOUND 2" O.D. IRON PIPE WAS TO DOUBLE THE DISTANCE OF THE SW 1/4 OF SECTION 5 AND THE SE 1/4 OF SECTION 8. NO CALCULATIONS FIT THE MICHAEL MOE CSM IN THE SE 1/4 OF SECTION 5. ACCEPTED THE CALCULATED POSITION AS THE BEST EVIDENCE OF THE CORNER LOCATION. SET 3 NEW TIES AND MEASURED TO THE EXISTING TIES.



LOCATION
 (INDICATE CORNER BY "X")

SEAL:

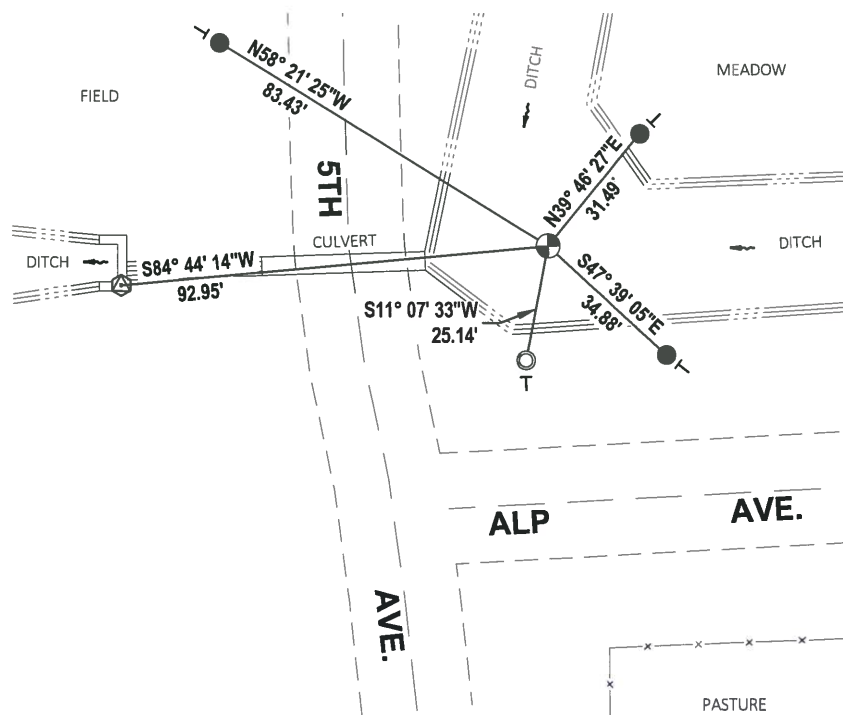


DATA SHOWN HERE ON THIS TIE SHEET IS CORRECT AND COMPLETE TO THE BEST OF MY KNOWLEDGE AND BELIEF.

PROFESSIONAL LAND SURVEYOR

DATE 3/9/2020

- TIE SKETCH



- SET 3/4" x 18" IRON REBAR, 1.50#/FT
- ⊕ FOUND U.S.G.S. BENCHMARK
- FOUND 2" O.D. IRON PIPE
- ⊕ CALCULATED POSITION
- - VINYL "T" POST

ADAMS COUNTY

Survey Monument Record

CORNER NO. 145
SECTION 4
TOWN 20
RANGE 7

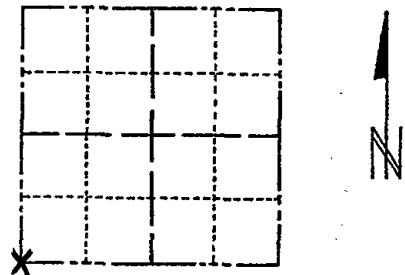
TYPE OF MONUMENT: reference to actual monument only

STATE PLANE COORDINATES: N _____
E _____

ELEVATION — M.S.L. DATUM: _____

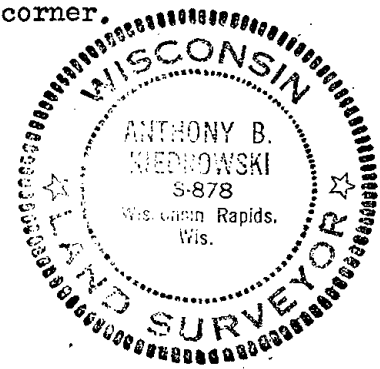
THETA ANGLE: _____

FIELD BOOK: 106? PAGE ?



LOCATION
(Indicated by 'X')

SEAL:



BASIS FOR MONUMENT LOCATION

(Use reverse side if necessary)

Show info such as: History of corner, with reference to Vol. and pg, dates, surveyor; exact description of monument replaced; if location computed, by taped or EDM traverse; landowner remarks, etc.

Set reference to actual corner only and did not set the corner.

set by Anthony B. Kiedrowski R.L.S. 878

Location established from data gathered from a traverse of the S 1/2 of the section.

Note. F.B. 106 lost.

CERTIFIED CORRECT:

Anthony B. Kiedrowski
Registered Land Surveyor

DATE: 1-27-73

ALL O.K. 3-23-79 DW-RW
Ok 4-30-84 SS-DK
ALL O.K. 3-28-94 JG-GR
OK 2-22-99 JG
SET 12" BARN SPIKE - RETIE 12-13-04 JG-SS
4 TIES REMAIN 10-8-09 SS

TIE SKETCH

(Show at least four ties) U.S.G.S. Bench Mark on Dam

