

04 SECTION 20 TOWN 07 RANGE

# ADAMS COUNTY

COUNTY CORNER NO.: 26  
 ROMPORTOL ID: 42007040020

## PUBLIC LAND SURVEY MONUMENT RECORD

TYPE OF MONUMENT: CALCULATED POSITION  
 ADAMS COUNTY COORDINATES, NAD 83 (2007)

N. 314274.594

E. 570069.344

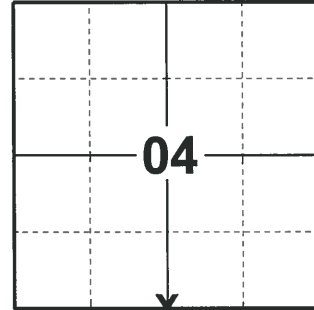
ELEVATION- - - - DATUM - - - -

FIELD WORK DATE: 02/11/2020

### BASIS FOR MONUMENT LOCATION

1982 - PLS 878 THIS IS A RETIE OF EXISTING MONUMENT.

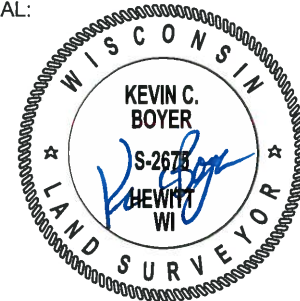
2020 - PLS 2675 FOUND NO EVIDENCE OF THE CORNER MONUMENT. CALCULATED POSITION FROM HOLDING A RECORDED DISTANCES ON A STRAIGHT LINE FROM NORTHWEST CORNER OF CSM#1431 VOL.6, PG39 AND 3/4" WITNESS ROD SET IN 2004. THIS POSITION AGREES WITH THE 1-1/4" IRON PIPE TO THE NORTH (39.67' RECORDED - VS- 39.70' MEASURED), ACCEPTED THE CALCULATED POSITION AS THE CORNER LOCATION. SET 2 NEW TIES AND MEASURED TO THE FOUND PROPERTY IRON AND EXISTING TIES.



LOCATION

(INDICATE CORNER BY "X")

SEAL:



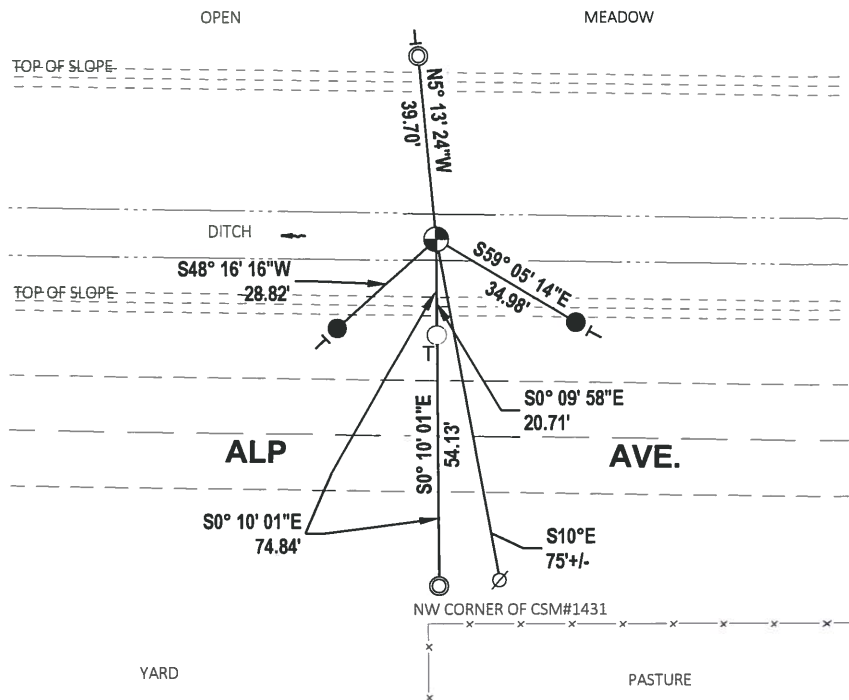
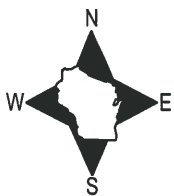
DATA SHOWN HERE ON THIS TIE SHEET IS CORRECT AND COMPLETE TO THE BEST OF MY KNOWLEDGE AND BELIEF.

PROFESSIONAL LAND SURVEYOR

DATE 3/9/2020

### - TIE SKETCH

NOTE: THE CORNER LANDS 42.3± NORTH OF ALP AVE. CENTERLINE.

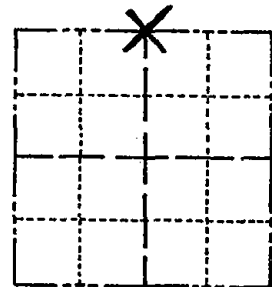


- SET 3/4" x 18" IRON REBAR, 1.50#/FT
- FOUND 3/4" IRON ROD
- ⊙ FOUND 1-1/4" O.D. IRON PIPE
- ⊕ CALCULATED POSITION
- ∅ POWER POLE
- ┌ VINYL "T" POST

# Government Land Corner Certificate

ADAMS County  
 TYPE OF MONUMENT: 1" X 66" I. PIPE W/ PLUG  
 STATE PLANE COORDINATES: N \_\_\_\_\_  
 E \_\_\_\_\_  
 ELEVATION — M.S.L. DATUM: \_\_\_\_\_  
 THETA ANGLE: \_\_\_\_\_  
 FIELD BOOK: 88 PAGE 138  
 DRAWN BY: ROBERT T. WELCH

CORNER NO. 26  
 SECTION 9  
 TOWN 20  
 RANGE 7



LOCATION  
(Indicated by 'X')

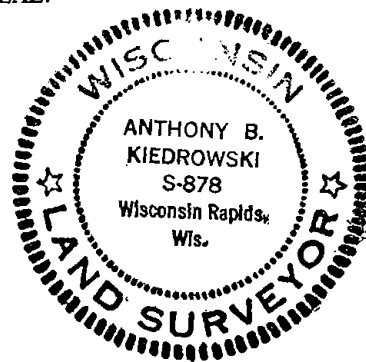
## BASIS FOR MONUMENT LOCATION

Show info such as: History of corner, with reference to Vol. and pg., dates, surveyor; exact description of monument replaced; if location computed, by taped or EDM traverse; landowner remarks, etc. (Use reverse side if necessary)

*This is a re-tie of existing monument*

Ok 4-30-84 SS-DK  
 OK 3-28-94 JG-GR  
 OK 2-22-99 - JG  
 RETIE 12-13-04 JG-SS  
 10-07-09 OK - SS

SEAL:



DATA SHOWN HERE ON  
CERTIFIED CORRECT:

*AB Kiedrowski*  
Registered Land Surveyor

DATE: 6-28-82

## TIE SKETCH

Show at least four ties, also fence lines, roads, topo, size and type of witness trees and if off road - best way to arrive at corner.

