

03 SECTION 20 TOWN 07 RANGE

ADAMS COUNTY

COUNTY CORNER NO.: 29
ROMPORTOL ID: 42007030000

PUBLIC LAND SURVEY MONUMENT RECORD

TYPE OF MONUMENT: CALCULATED POSITION
ADAMS COUNTY COORDINATES, NAD 83 (2007)

N. 314249.664

E. 577954.068

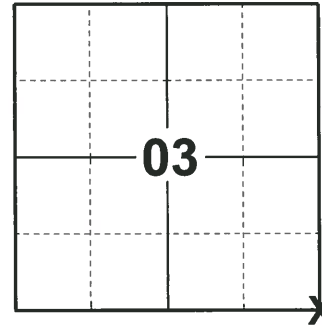
ELEVATION- - - - DATUM - - - -

FIELD WORK DATE: 12/09/2019

BASIS FOR MONUMENT LOCATION

1982 - PLS 878 NO RESURVEYS OF RECORD. ANY EVIDENCE OF THIS CORNER DESTROYED BY DITCHING. CORNER SET BY DOUBLE PROPORTIONATE MEASURE BETWEEN THE SW CORNER OF SECTION 3 AND THE SE CORNER OF SECTION 2 FOR EAST-WEST LOCATION AND BETWEEN THE W1/4 CORNER OF SECTION 1 AND THE W1/4 CORNER SECTION 11 FOR NORTH-SOUTH LOCATION. NO HARRISON SET AS CORNER FALLS IN DITCH.

2019 - PLS 2675 CALCULATED POINT FROM THE W1/4 OF SECTION 11 OF 2644.97' PER SECTION 11 SUMMARY BY ABK. THE INVERSE BACK TO THE SOUTH WITNESS IS 25.01' AND RECORDED ON THE 1982 TIE SHEET AS 25.00'. THE EAST MEANDER CORNER ON THE 1982 TIE SHEET IS LOST. NO CALCULATIONS FIT THE NORTH WITNESS, BUT IT DOES NOT APPEAR TO BE DISTURBED. CSM 5305 SHOWS THE SE CORNER OF SECTION 3 TO BE A PK NAIL, WHICH IS NOT POSSIBLE. THE DISTANCE ON CSM 5305 DOES NOT FIT THE NORTH WITNESS AND E1/4 OF SECTION 3. ACCEPTED THE CALCULATED POSITION AS THE BEST EVIDENCE OF THE CORNER LOCATION. SET 2 NEW TIES AND MEASURED TO THE EXISTING TIES.



LOCATION
(INDICATE CORNER BY "X")

SEAL:

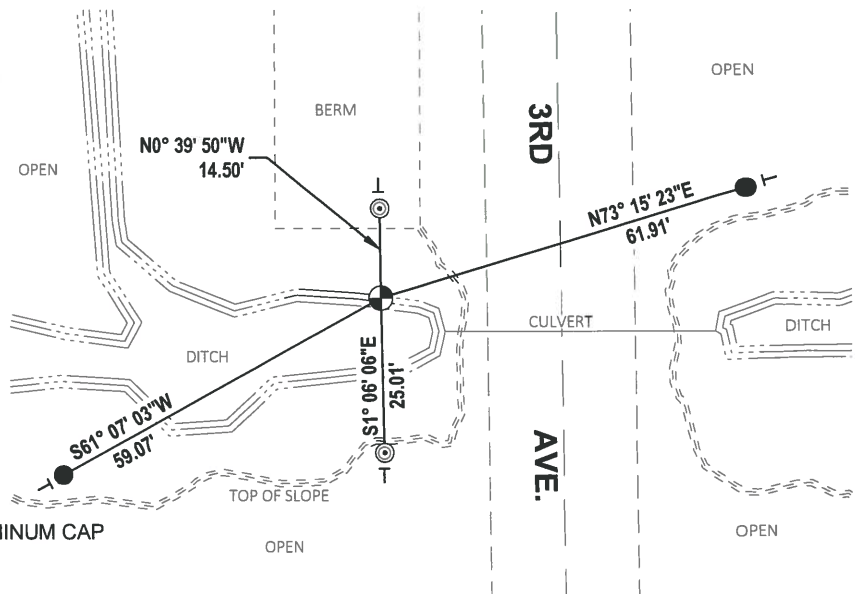


DATA SHOWN HERE ON THIS TIE SHEET IS CORRECT AND COMPLETE TO THE BEST OF MY KNOWLEDGE AND BELIEF.

PROFESSIONAL LAND SURVEYOR

DATE 3/9/2020

- TIE SKETCH

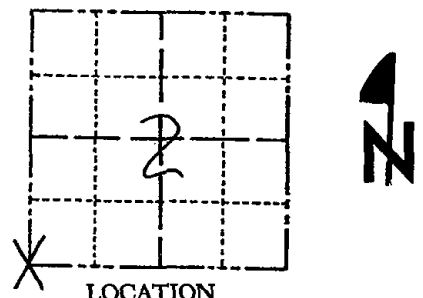


- SET 3/4" x 18" IRON REBAR, 1.50#/FT
- ◎ FOUND 2-3/8" O.D. IRON PIPE W/ADAM CO. ALUMINUM CAP
- ⊕ CALCULATED POSITION
- VINYL "T" POST

Government Land Corner Certificate

ADAMS County
 TYPE OF MONUMENT: 2" IRON PIPE WITNESSES
 STATE PLANE COORDINATES: N _____
 E _____
 ELEVATION — M.S.L. DATUM: _____
 THETA ANGLE: _____
 FIELD BOOK: 88 PAGE 133
 DRAWN BY: S.J.H.

CORNER NO. 29
 SECTION 2
 TOWN 20
 RANGE 7



LOCATION
 (Indicated by 'X')

BASIS FOR MONUMENT LOCATION

Show info such as: History of corner, with reference to Vol. and pg., dates, surveyor; exact description of monument replaced; if location computed, by taped or EDM traverse; landowner remarks, etc. (Use reverse side if necessary)

No resurveys of record. Any evidence of this corner destroyed by ditching. Corner set by double proportionate measure between the SW corner of Section 3 and the SE corner of Section 2 for East-West location and between the W $\frac{1}{2}$ corner of Section 1 and the W $\frac{1}{2}$ corner of Section 11 for North-South location. No Harrison set as corner falls in ditch.

Ok 5-2-84 SS-DK

SEAL:



DATA SHOWN HERE ON
 CERTIFIED CORRECT:

Anthony B. Kiedrowski
 Registered Land Surveyor

DATE: 5-25-82

TIE SKETCH

Show at least four ties, also fence lines, roads, topo, size and type of witness trees' and if off road - best way to arrive at corner.

