

07
SECTION

20
TOWN

07
RANGE

ADAMS COUNTY

COUNTY CORNER NO.: 35

ROMPORTOL ID: 42007072000

PUBLIC LAND SURVEY MONUMENT RECORD

TYPE OF MONUMENT: SET 3/4"X24" IRON REBAR
ADAMS COUNTY COORDINATES, NAD 83 (2007)

N. 311586.652

E. 562046.184

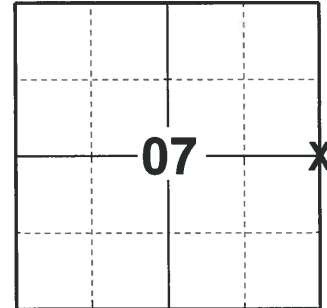
ELEVATION- DATUM

FIELD WORK DATE: 02/13/2020

BASIS FOR MONUMENT LOCATION

1983 - PLS 1444 THIS CORNER WAS SET EQUIDISTANT AND ON LINE BETWEEN SECTION CORNERS. 10'X10' EXCAVATION YIELDED NOTHING AT THIS LOCATION.

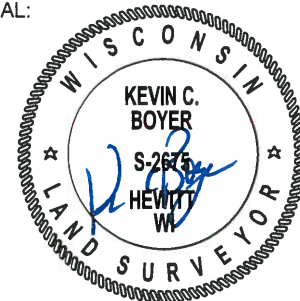
2020 - PLS 2675 FOUND 1-1/4" IRON PIPE LEANING SOUTHWEST AND DID NOT RECOVER ANY TIES OR WITNESSES. DUG DEEPER, FOUND THAT THE TOP 10" WAS BENT AND THE BOTTOM 14" WAS STILL STRAIGHT. THE 1-1/4" IRON PIPE IS NEAR ON LINE AND EQUIDISTANT BETWEEN THE SE CORNER OF SECTION 6 AND THE SE CORNER OF SECTION 7. ACCEPTED THE 1-1/4" IRON PIPE AS THE BEST EVIDENCE OF THE CORNER LOCATION. REMOVED THE BENT 1-1/4" IRON PIPE AND SET A 3/4"X24" REBAR IN THE PIPE LOCATION AND SET 4 NEW TIES.



LOCATION

(INDICATE CORNER BY "X")

SEAL:



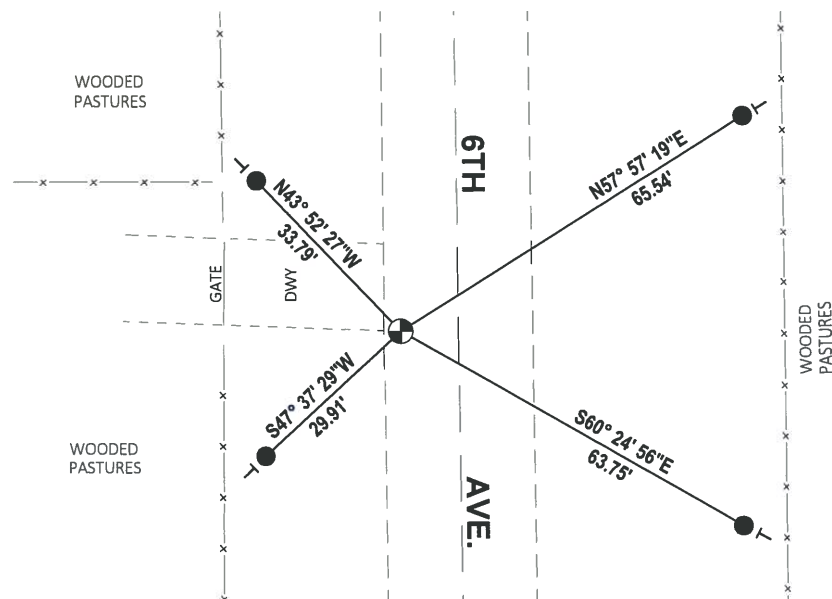
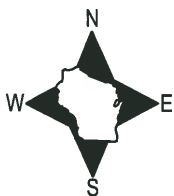
DATA SHOWN HERE ON THIS TIE SHEET IS CORRECT AND COMPLETE TO THE BEST OF MY KNOWLEDGE AND BELIEF.

PROFESSIONAL LAND SURVEYOR

DATE 3/9/2020

- TIE SKETCH

NOTE: THE CORNER LANDS 9± WEST OF THE CENTERLINE OF 6TH AVE.

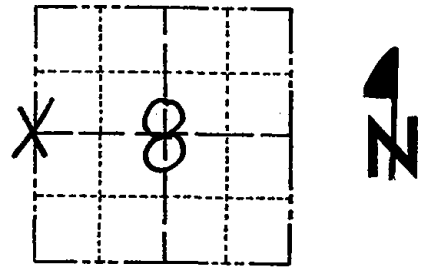


- SET 3/4" x 18" IRON REBAR, 1.50#/FT
- ⊕ SET 3/4" x 24" IRON REBAR, 0.50#/FT
- ┌ VINYL "T" POST

Government Land Corner Certificate

ADAMS County
 TYPE OF MONUMENT: Harrison
 STATE PLANE COORDINATES: N _____
 E _____
 ELEVATION — M.S.L. DATUM: _____
 THETA ANGLE: _____
 FIELD BOOK: 91 PAGE 74
 DRAWN BY: SSH

CORNER NO. 35
 SECTION 8
 TOWN 20
 RANGE 7



LOCATION
 (Indicated by 'X')

BASIS FOR MONUMENT LOCATION

Show info such as: History of corner, with reference to Vol. and pg., dates, surveyor; exact description of monument replaced; if location computed, by taped or EDM traverse; landowner remarks, etc. (Use reverse side if necessary)

This corner was set equidistant and on line between Section corners. 10'x10' excavation yielded nothing at this location.

OK 3-28-94 JG, GR
 OK 2-22-99 - JG
 FO BENT 1" IP 12-14-04 - GOOD TIES
 REMAIN WEST - REPLACE AFTER FROST?

SEAL:



DATA SHOWN HERE ON
 CERTIFIED CORRECT:

Lance J. Habeck
 Registered Land Surveyor

DATE: 7/29/83

TIE SKETCH

Show at least four ties, also fence lines, roads, topo, size and type of witness trees and if off road - best way to arrive at corner.

